



Tecumseh

Indoor Condensing Unit Technical Datasheet

JULY 19, 2021
Revision: REL

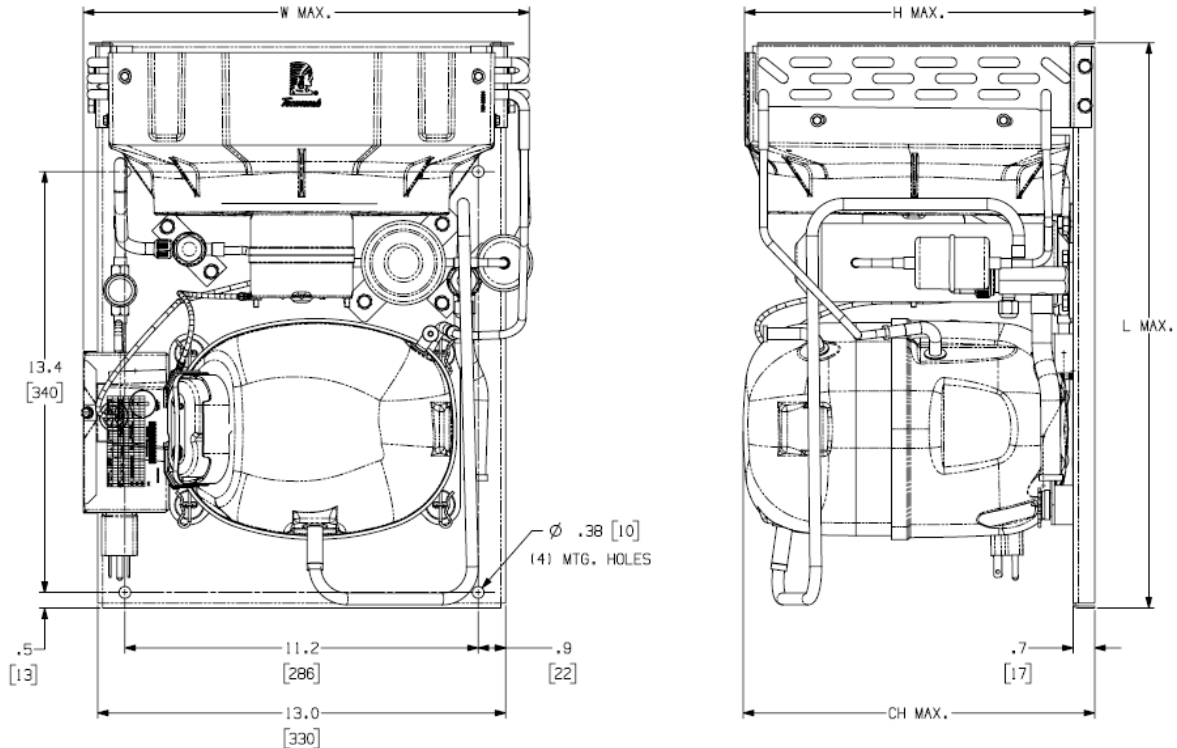
Model: AJ2427A-AA1CDC

BoM: 29G203-59

R-12

3/4 HP

Air Cooled



Model	Dimensions, inches				Line Connection*		Pumpdown	Air	Oil Ch	Gr. Wt.
	L	W	H	CH	Suction	Liquid	90 °F 90%	SCFM	Oz.	Lbs.
AJ2427A-AA1CDC	18.0	14.2	11.2	11.2	5/8" S	3/8" S	2.25 lbs	185	16	64

* F = Flare, S = Solder, RF or RS = Rotolock with Flare or Solder Connections, C = Compression Fitting
 Factory charge: 20 PSIG Nitrogen – **MUST BE EVACUATED**

Evaporator T,		Ambient Temperatures								
		90°F			100°F			110°F		
°F	PSIG	BTUH	Watts	Cond T	BTUH	Watts	Cond T	BTUH	Watts	Cond T
-40	11.0	1175	490	100	1000	465	107	825	440	113
-30	5.5	1625	550	103	1500	540	110	1340	530	118
-20	0.6	2160	620	108	2000	620	115	1890	620	122
-10	4.5	2780	700	112	2600	710	119	2425	720	125
0	9.2	3400	790	117	3230	805	123	3050	820	130
10	14.6	4160	900	122	3925	915	129	3725	930	134

60 Hz Performance

Return gas temp 40°F below 20°F evaporator,
and 65°F above 20° evap, 5°F sub cooling

