



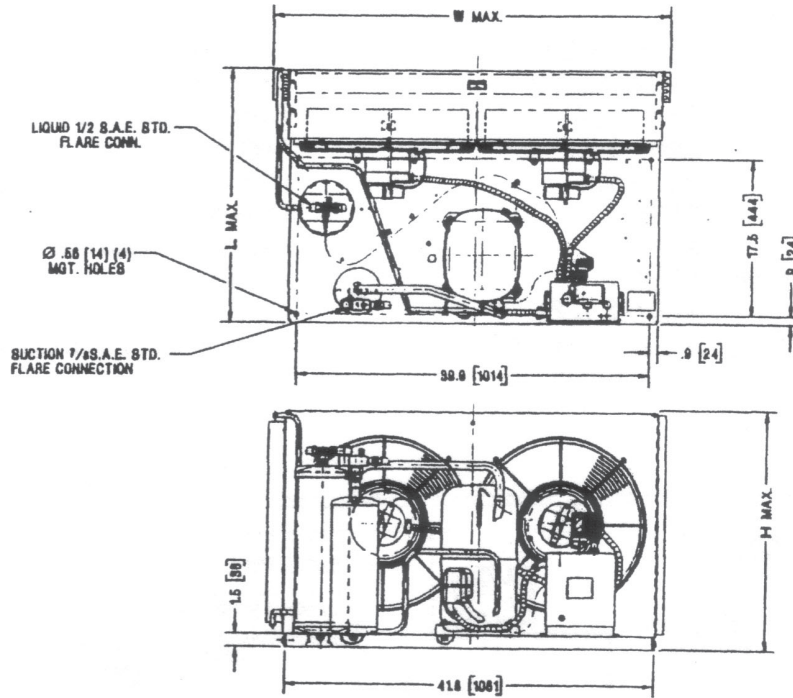
# TECUMSEH HERMETIC CONDENSING UNITS

AGA4553EXTXM

April 1, 1997

Revision 2003

MODEL AGA4553EXTXM (B/M 2A4053-9) R-22 4 HP AIR COOLED



NOTE: DIMENSIONING = INCHES (MILLIMETERS)

MO

| Model        | Dimensions |      |      |      | *Line Connection |       | Pumpdown<br>90° F<br>90% Full | Air<br>CFM | Oil<br>Chg<br>oz. | Gr.<br>Wt.<br>Lbs. |
|--------------|------------|------|------|------|------------------|-------|-------------------------------|------------|-------------------|--------------------|
|              | L          | W    | H    | CH   | Suct.            | Liq.  |                               |            |                   |                    |
| AGA4553EXTXM | 28.8       | 44.9 | 26.9 | 18.9 | 7/8 C            | 1/2 F | 29.7#                         | 4200       | 65                | 304                |

\*F=Flare, S=Solder, RF or RS= Rotolock Valve with Flare or Solder Connections  
C = Compression Fitting

Factory charge: 20 psig nitrogen - MUST BE EVACUATED 60 HZ PERFORMANCE

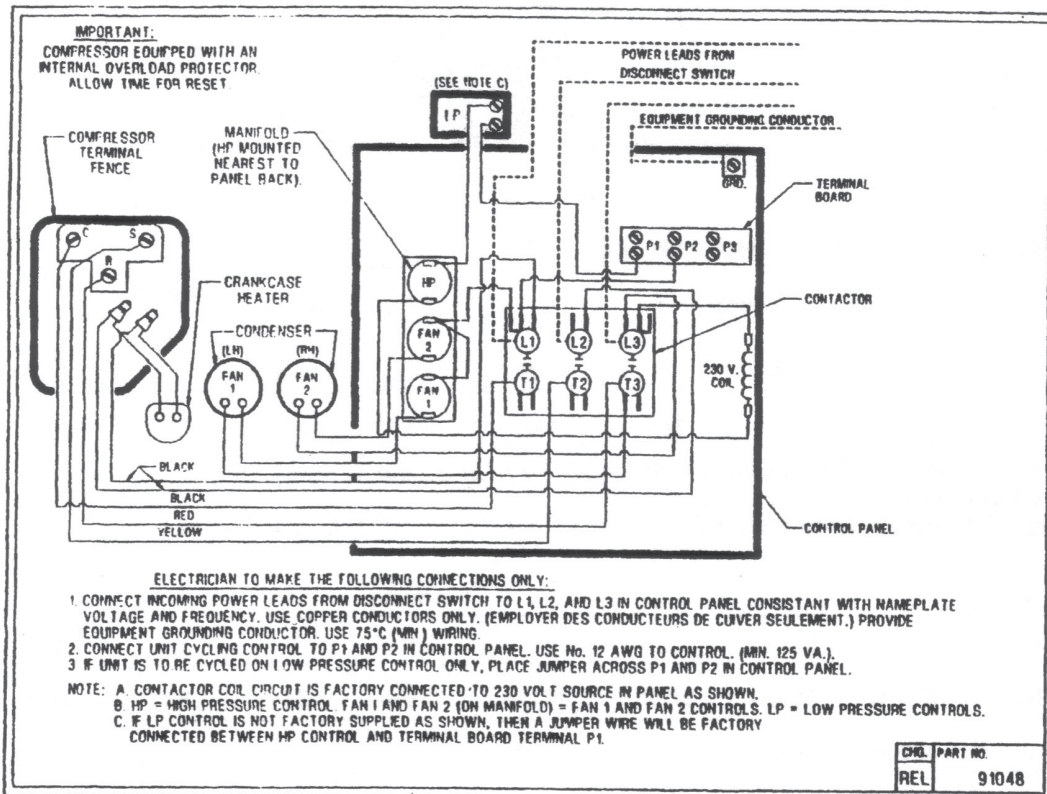
| Approved<br>Evap. Range |      | Ambient |       |      |        |       |      |        |       |      |
|-------------------------|------|---------|-------|------|--------|-------|------|--------|-------|------|
|                         |      | 90° F   |       |      | 100° F |       |      | 110° F |       |      |
| °F                      | PSIG | BTUH    | Watts | Head | BTUH   | Watts | Head | BTUH   | Watts | Head |
| +20                     | 43.0 | 35000   | 4200  | 236  | 32100  | 4250  | 267  | 27100  | 4320  | 293  |
| 30                      | 54.8 | 41500   | 4900  | 253  | 38550  | 5000  | 281  | 36200  | 5100  | 312  |
| 40                      | 68.5 | 49200   | 5650  | 270  | 46000  | 5750  | 300  | 42700  | 5900  | 328  |
| 45                      | 76.0 | 53000   | 6000  | 281  | 49650  | 6150  | 312  | 46350  | 6350  | 338  |
| 50                      | 84.0 | 56000   | 6350  | 293  | 52500  | 6550  | 320  | 49100  | 6750  | 350  |

Date: January 2003  
Unit Catalog Update

**SPECIFICATIONS** AGA4553EXTXM

Nominal Voltage 230/200-3  
 Unit B/M 2A4053-9  
 Voltage Range 253 to 180  
 Min. Circuit Ampacity 23.7  
 Max. Fuse Size (Amps) 40  
**Compressor Model** AGA5553EXT  
 Comp. Bill of Material AG122RT-003  
 RLA/LRA 16.5/103.0  
 ESP Overload Internal  
 Control Panel AC1390-2  
 Fan Switch (s) 84096-1  
84096-2  
 High Pressure Switch 84095-1  
 Control 84026-5 (LP)  
 Contactor 91014 (30AMP-3PH,230V)  
 Fan Motor (OEM) 810S186B40

Fan RLA 1.90RLA  
 Replacement Motor TFM1862  
 Fan Motor Bracket Grd. Mnt.  
 Fan Blade 51529-2 (2 req)  
 Shroud 70611-1  
 Condenser K42-2  
 Fan Guard 70832 (2 req)  
 Receiver Tank 51082-2  
 Receiver Tank Valve 31585 (1/2" F) RL  
 Suction Rotolock 31576 M-Lock 7/8"  
 O' Ring Gasket 30234  
 Optional Outdoor Enclosure TP-311D  
 Crankcase Heater (If Inc) 90699  
 Accumulator TK00044000  
 Unit Drawing SU1901-22  
 Schematic or Elect. Drawing 91048



Some parts listed may be optional or listed as replacement parts.