



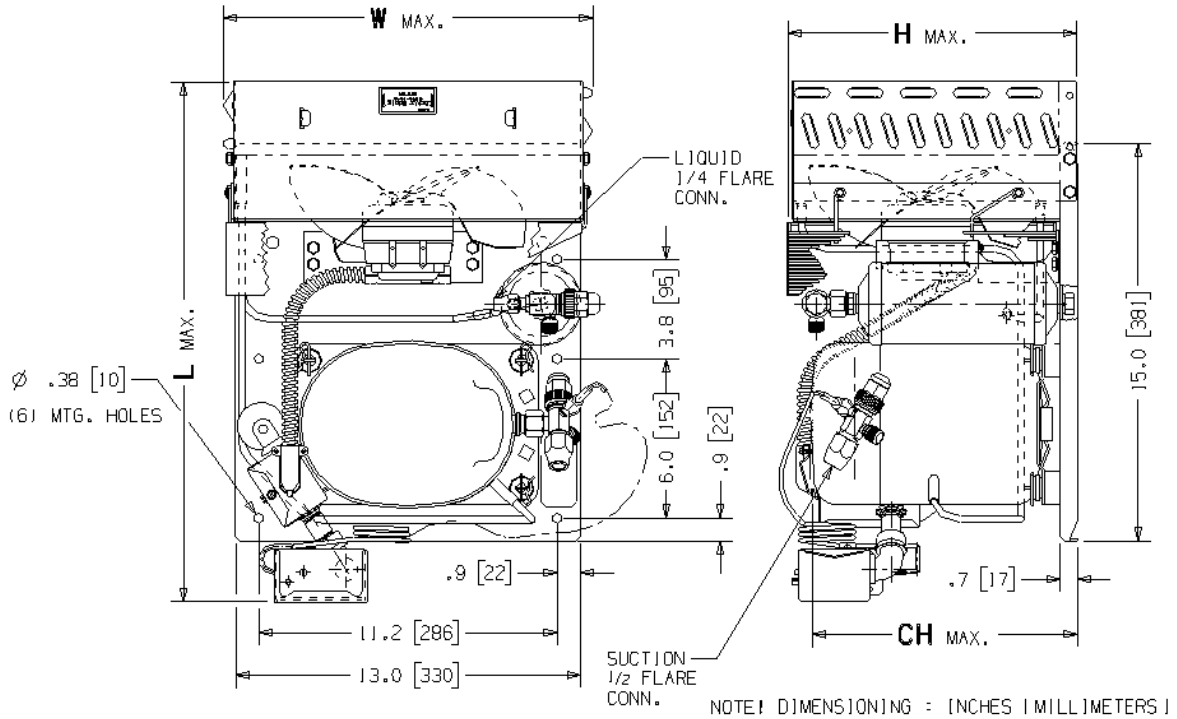
# Tecumseh Products Company Hermetic Condensing Units

Model: AKA9433EXAXC

R-22

1/2 HP

AIR COOLED



Model	Dimensions, inches				Line Connection*		Pumpdown	Air	Oil Ch	Gr. Wt.
	L	W	H	CH	Suction	Liquid	90 °F 90%	SCFM	Oz.	Lbs.
<b>AKA9433EXAXC</b>	19.6	14.0	10.9	10.2	1/2" F	1/4" F	3.4 Lbs	350	17	71

\* F = Flare, S = Solder, RF or RS = Rotolock with Flare or Solder Connections, C = Compression Fitting  
 Factory charge: 20 PSIG Nitrogen – **MUST BE EVACUATED**

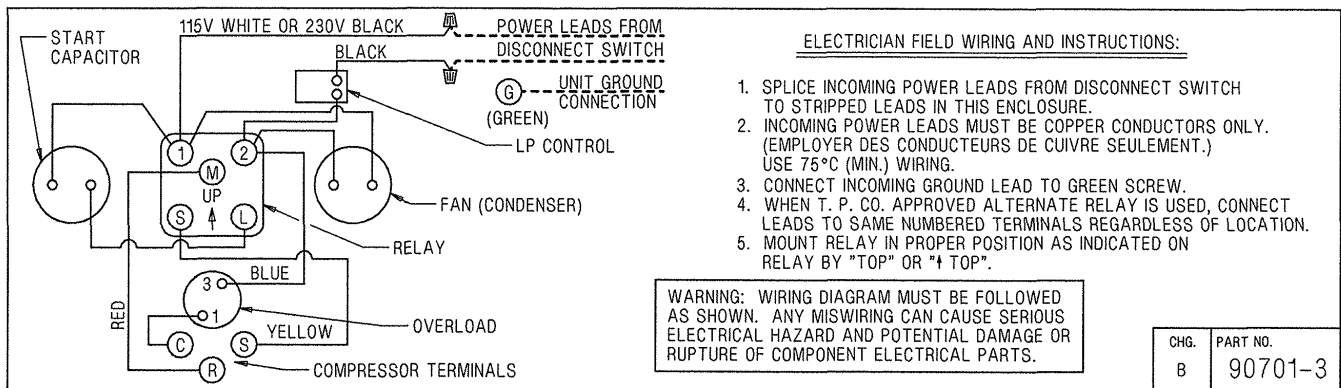
## 60 Hz Performance

Evap T, °F	PSIG	Ambient Temp											
		90°F			100°F			110°F			120°F		
		BTUH	Watts	Head	BTUH	Watts	Head	BTUH	Watts	Head	BTUH	Watts	Head
-10	16.5	1220	415	190	940	355	215	630	275	245	320	210	275
-5	20.0	1560	440	195	1250	395	225	930	345	250	610	290	275
0	24.0	1890	465	205	1560	430	230	1240	390	260	920	345	290
5	28.2	2220	500	210	1880	475	240	1560	440	270	1240	400	300
10	32.8	2580	535	220	2200	515	250	1880	490	280	1560	460	310
15	37.7	2940	570	230	2530	565	260	2210	550	290	1890	530	320
20	43.0	3320	600	240	2880	605	270	2560	610	300	2240	595	330
25	48.8	3710	630	250	3250	650	280	2900	660	315	2250	660	350
30	54.8	4030	690	265	3640	705	295	3280	720	330	-	-	-
35	61.5	4600	730	275	4070	755	305	3690	775	345	-	-	-
40	68.5	5100	780	290	4530	805	320	-	-	-	-	-	-
45	76.0	5710	820	300	5090	855	335	-	-	-	-	-	-

Return gas temperature 20° F max superheat above 20° F evaporator,  
 Below 20° F evaporator use 40° F return gas. 5° F subcooling

**Specifications:**

Model	AKA9433EXAXC	Model	AKA9433EXAXC
Nominal Volts-Hz-Ph	115/60/1; 100/50/1	Condenser	50840-1
Unit Bill of Material	2D268-1	Fan Motor	810M009B48
Voltage Range	103.5 to 126.5	Fan RLA	0.53 Amps
Min. Circuit Ampacity	9.6	Fan Blade	51564-1
Max. Fuse Size (amps)	15	Fan Shroud	70766-1
Compressor Model	AKA9428EXA	Fan Guard	70959
Comp. Bill of Material	AK164AT-038-P2	Receiver Tank	51080-1
Alt. Comp. Bill of Mat.	N/A	Liquid Line Valve	31584-1 (1/4" Flare)
Compressor RLA/LRA	7.25 / 48.8 Amps	Suction Valve	31579-1 (1/2" Flare)
Overload	8300CRTK87	Low Pressure Switch	84026-2
Relay	8200EMBJ97		
Alternate Relay	N/A	Unit Drawing	SU1909-55
Start Capacitor	85PS165C96	Electrical Drawing	90701-3
Start Capacitor Rating	161-193 $\mu$ F / 165 V	Design Pressure	350 PSIG
Run Cap.	N/A		
Run Cap. Rating	N/A		



S.E.