

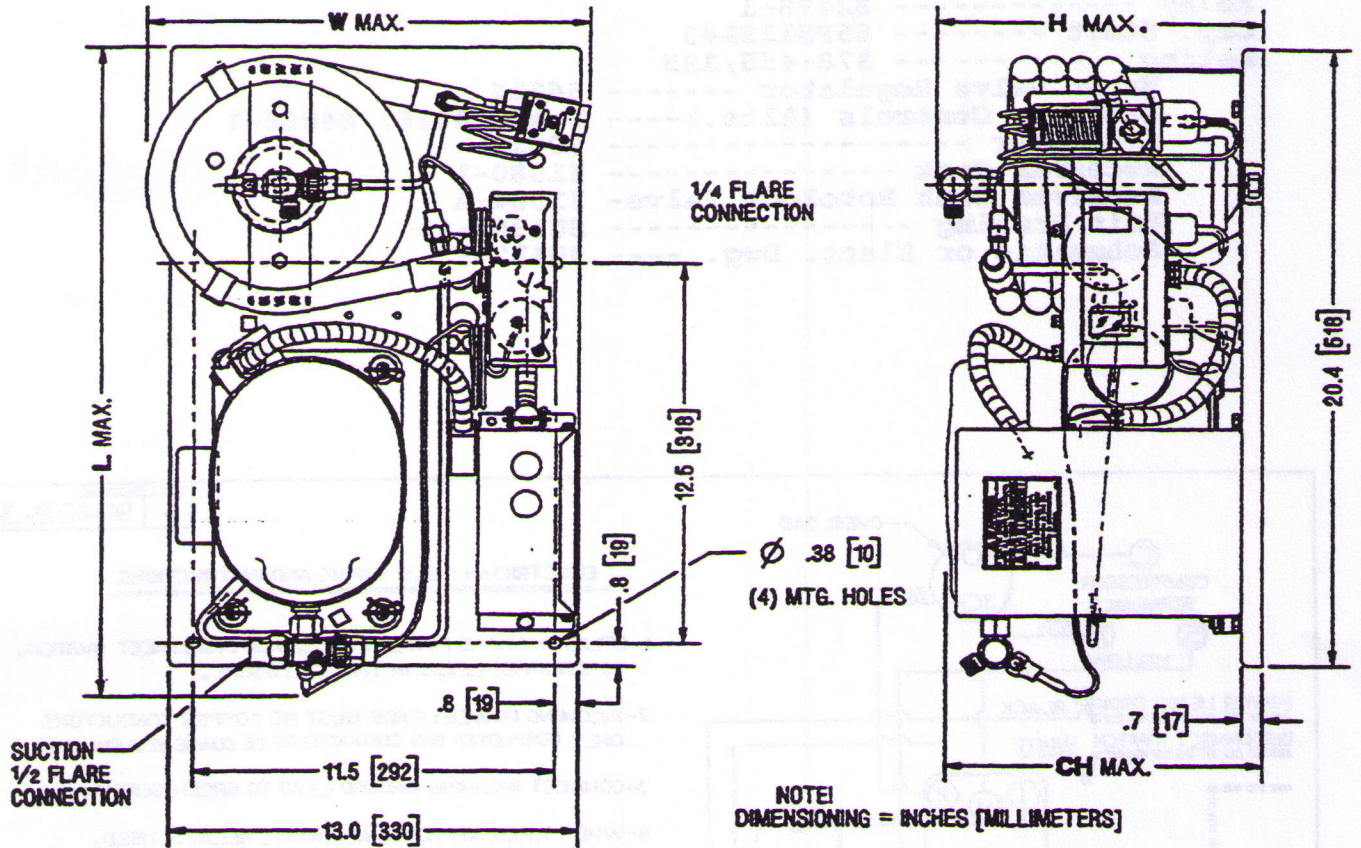


TECUMSEH

TECUMSEH HERMETIC CONDENSING UNITS

Date: 9-11-95

MODEL AKA9442ZXAXW (Formerly AK9442ZW) R-404A 1/2 HP WATER COOLEI



Model	Dimensions				*Line Connection		Pumpdown 90 ° F 90% Full	Oil Chg oz.	Gr. Wt. Lbs.
	L	W	H	CH	Suct.	Liq.			
AKA9442ZXAXW	21.4	14	10.5	10.1	½ F	¼ F	1.7#	17	67

*F=Flare, S=Solder, RF or RS= Rotolock Valve with Flare or Solder Connections
 Factory charge: 20 psig nitrogen - **MUST BE EVACUATED**
 Use 3/8" min. pipe size. Water valve inlet 3/8" NPT.

PERFORMANCE: Ambient 90°F—Return Gas 40°F—Condenser Water In 75°F—Head 254 psig (saturated liquid)

Evaporator Temp °F	0	10	20	30
BTU/HR.	2400	3600	5000	6600
Water Usage - gpm	.27	.30	.50	.80
Watts	580	680	780	880

The water valve should be adjusted to maintain a maximum of 95°F water outlet temperature in order to minimize water scaling within the condenser.

SPECIFICATIONS	AKA9442ZXAXW
Nominal Voltage -----	115-60-1
Unit B/M -----	2D288-1
Voltage Range -----	126 to 103.5
Min. Circuit Ampacity --	11.5
Max. Fuse Size (Amps) --	20
Compressor Model -----	AKA9438ZXA
Bill of Material --	AK175AT-038-P2
RLA/LRA -----	9.20/58.8
Cap. Cab. Assy. ---	AE1197-044A
Overload -----	8300CTRL45
Relay -----	82498-1
Cap. Start -----	85PS125A43
Rating -----	378-455/125
Water Valve Regulator -----	56516
Pressure Controls (Alts.)----	Dual 84066, 84066-1
Condenser -----	50812
Receiver Tank -----	51080-1
Receiver Tank Rotolock Valve-	31584-A
Unit Drawing -----	SU1909-41
Schematic or Elect. Dwg. ----	90432-3

