



Indoor Condensing Unit Technical Datasheet

Tecumseh

November 7, 2023
Revision: REL

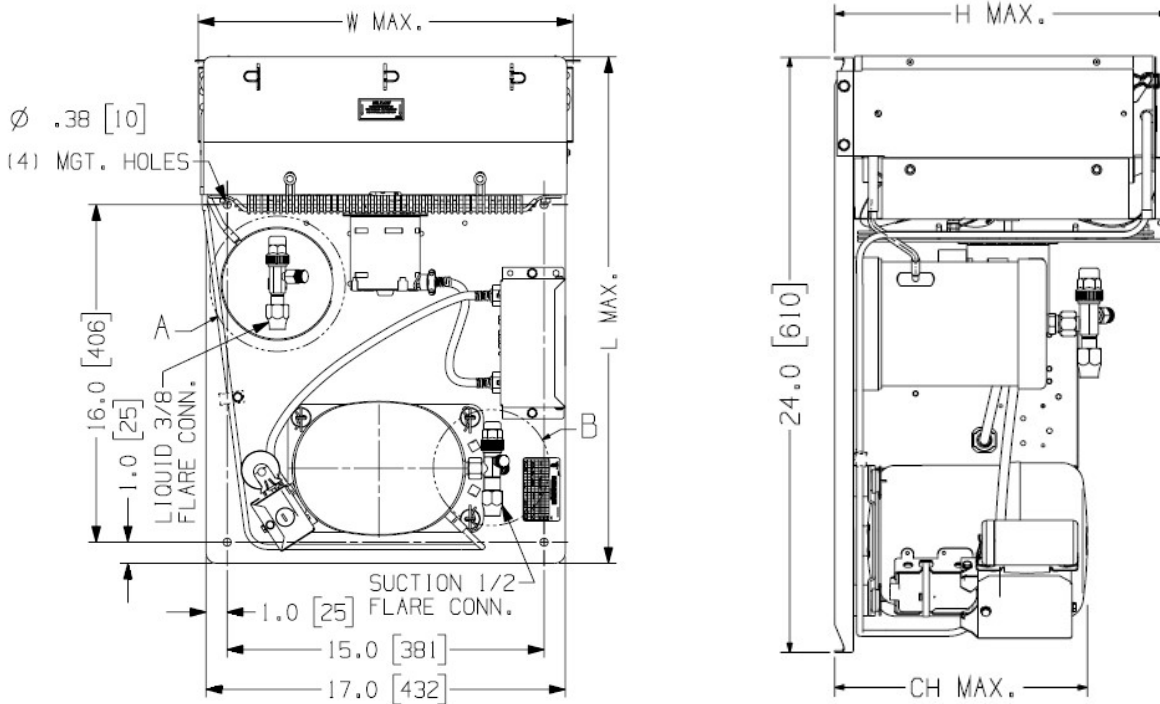
Model: AKA9463ZXAXC

BoM: 32B788-1

R-404A

1 HP

AIR COOLED



Model	Dimensions, inches				Line Connection*		Pump down	Air	Oil Ch	Gr. Wt.
	L	W	H	CH	Suction	Liquid	90°F 90%	SCFM	Oz.	Lbs.
AKA9463ZXAXC	24.3	18.0	14.0	10.2	1/2" F	3/8" F	6.0 lbs	600	17.0	84

* F = Flare, S = Solder, RF or RS = Rotolock with Flare or Solder Connections, C = Compression Fitting

Evaporator		Ambient Temperatures											
		80°F			90°F			100°F			110°F		
°F	PSIG	BTU/H	Watts	Cond T	BTU/H	Watts	Cond T	BTU/H	Watts	Cond T	BTU/H	Watts	Cond T
-10	23.6	4237	1101	98	3746	1087	107	3255	1072	115	2765	1058	124
-5	27.9	4916	1171	100	4352	1163	109	3788	1154	117	3224	1146	126
0	32.6	5602	1241	102	4964	1239	111	4327	1237	119	3689	1235	128
5	37.7	6296	1313	104	5585	1317	113	4872	1321	121	4161	1326	130
10	43.1	6997	1385	106	6211	1395	115	5426	1406	124	4640	1416	132
15	49	7708	1458	109	6848	1475	117	5987	1491	126	5126	1508	134
20	55.3	8428	1531	111	7492	1554	120	6556	1577	128	5621	1600	137
25	62.1	8661	1645	114	7705	1676	122	6748	1707	131	5792	1738	139
30	69.3	9338	1724	116	8312	1762	125	7286	1800	133	---	---	---
35	77.1	10019	1805	119	8924	1849	128	7828	1893	136	---	---	---
40	85.4	10706	1887	122	9540	1938	130	8375	1988	139	---	---	---
45	94.2	11396	1970	125	10162	2027	133	---	---	---	---	---	---

60 Hz Performance

Return Gas Temp = 40F for Evaporator Temp 20F and Below

Return Gas Temp = 65F for Evap Temp > 20F, 5°F sub cooling

