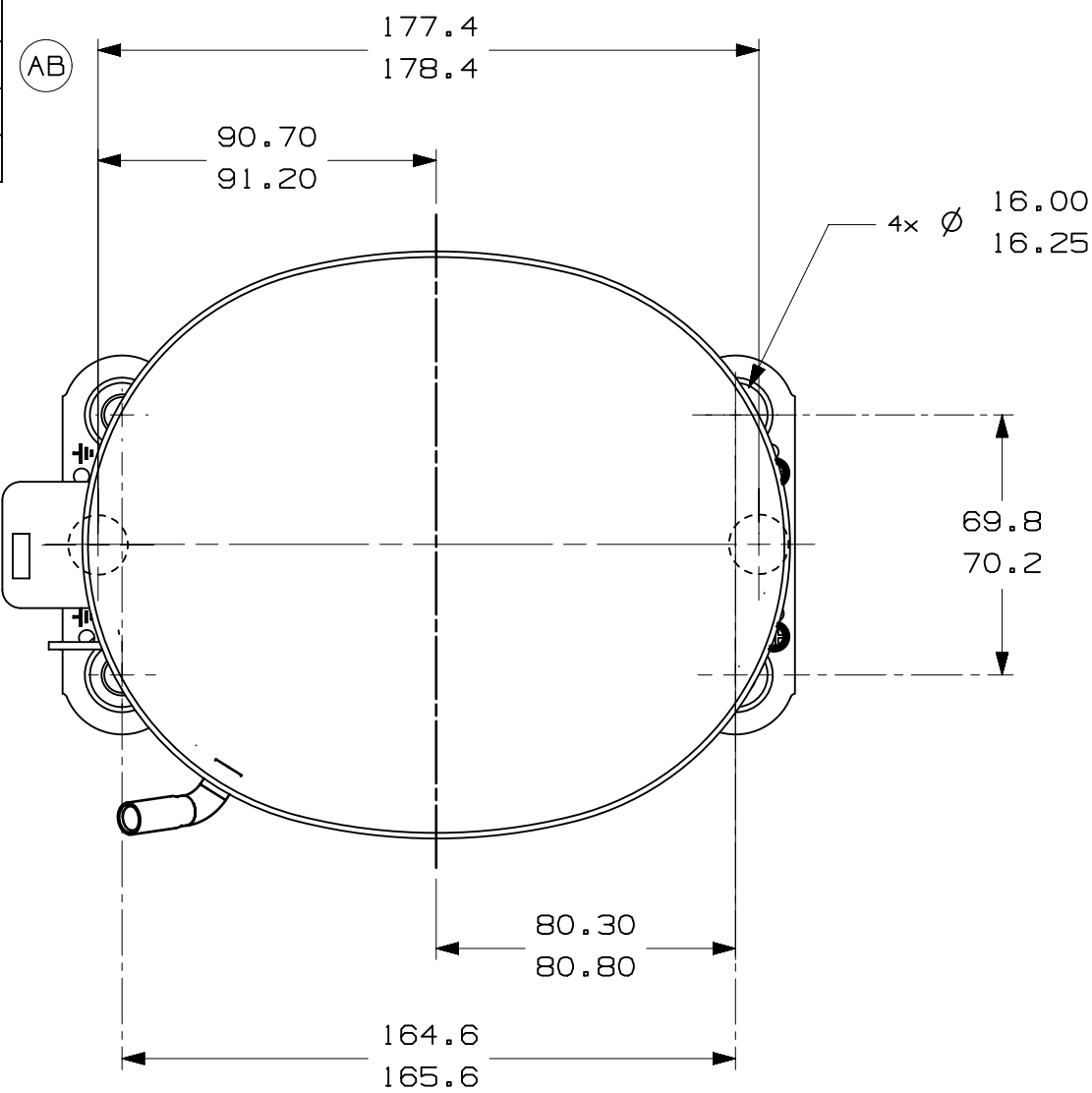
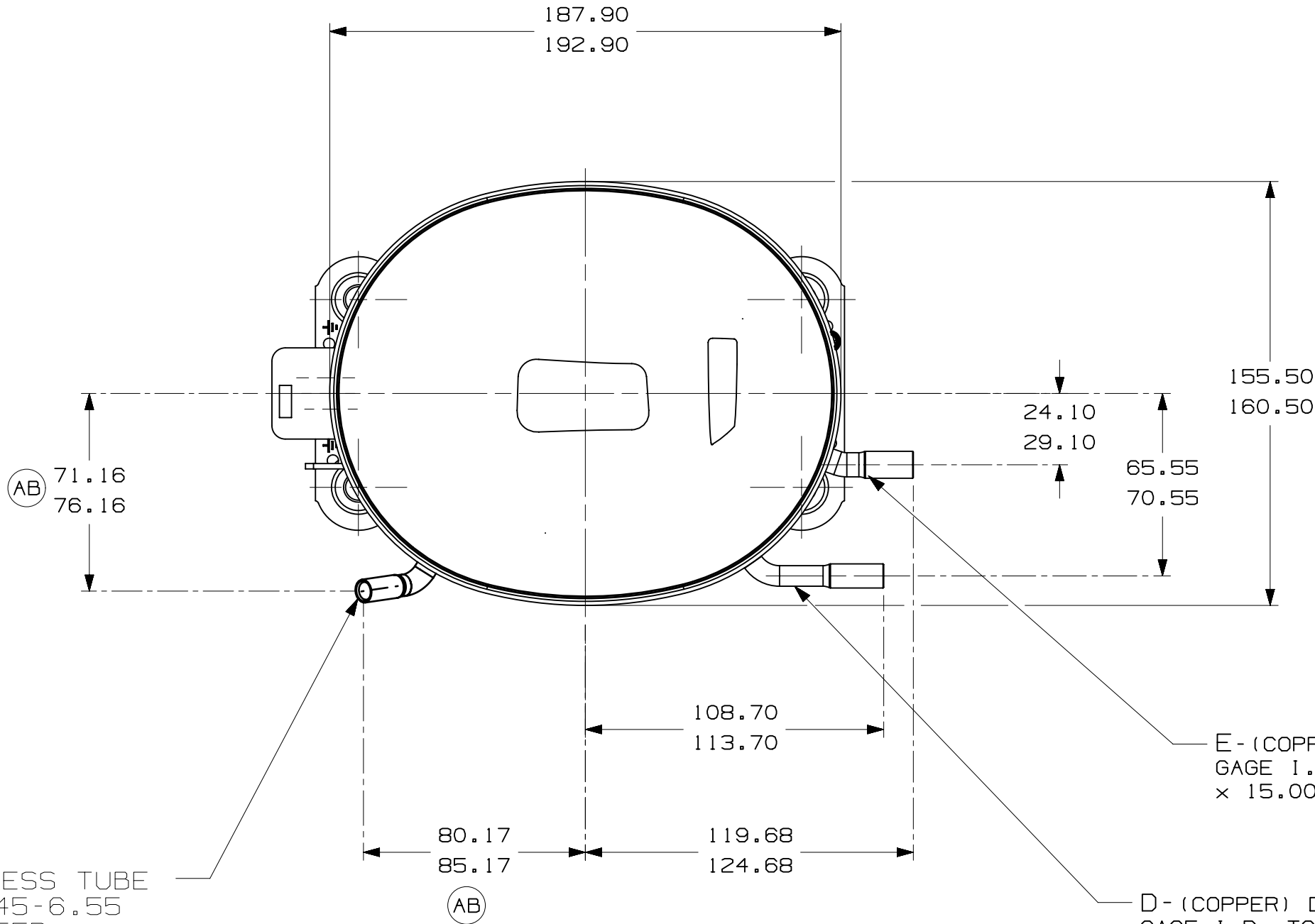


ITEM	PART NUMBER
A	320-10687
B	14963285
C	14947663
D	580-10244
E	580-10019



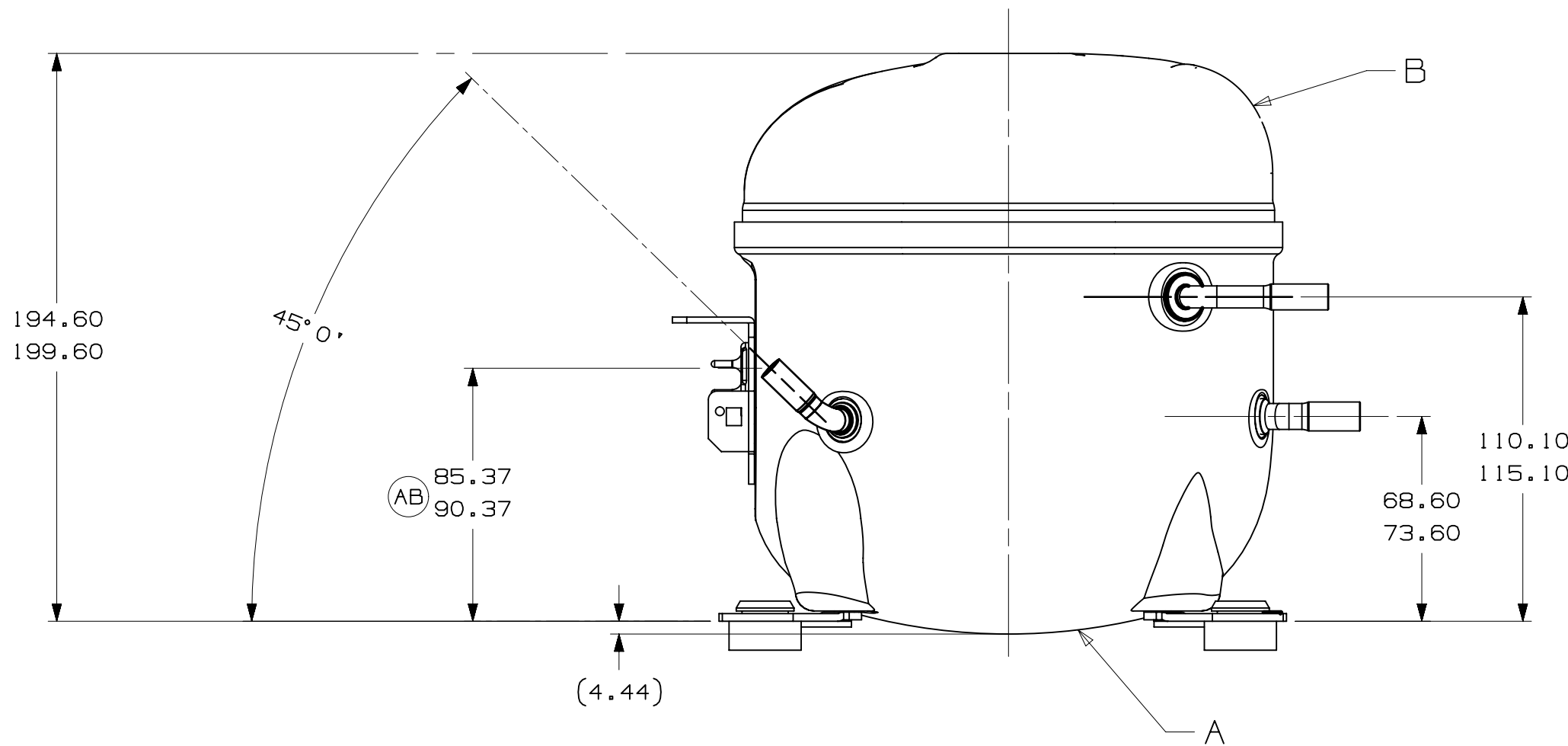
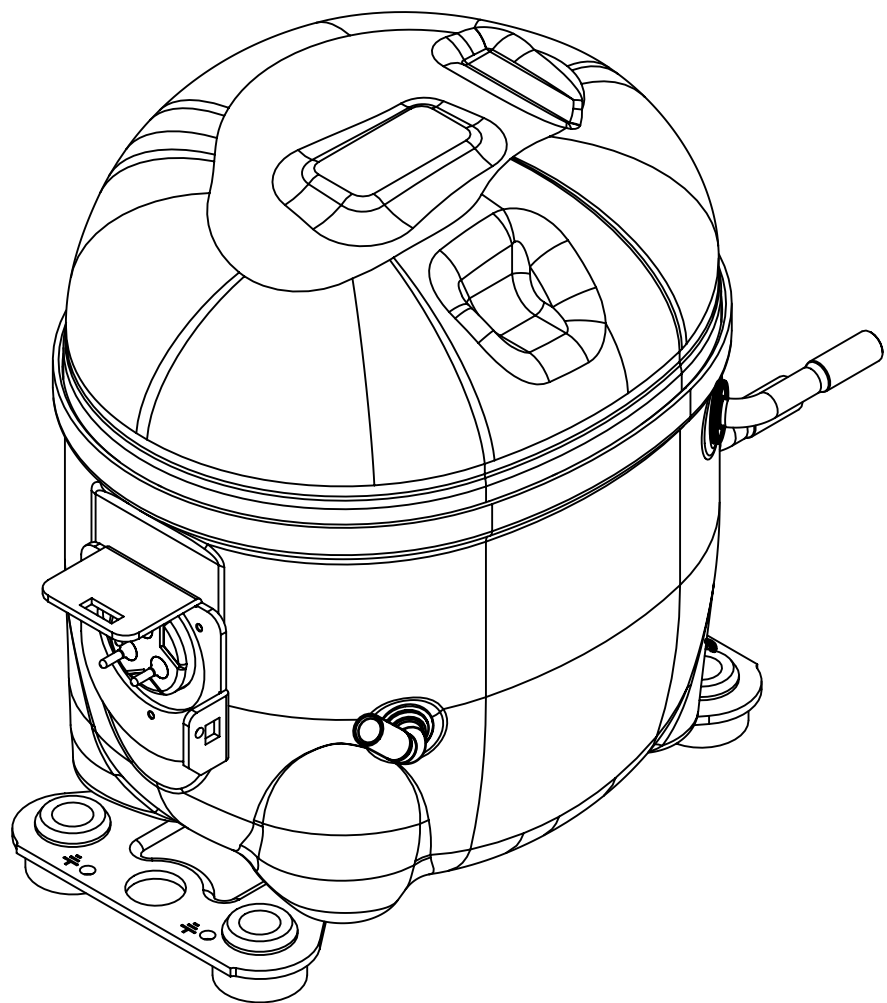
- AUXILIARY VIEW -
FASTENING DIMENSIONS

C - (COPPER) PROCESS TUBE
GAGE I.D. TO 6.45-6.55
× 13.00-15.00 DEEP.




E - (COPPER) SUCTION TUBE
GAGE I.D. TO 8.00-8.10
× 15.00-17.00 DEEP.

D - (COPPER) DISCHARGE TUBE
GAGE I.D. TO 6.45-6.55
× 13.00-15.00 DEEP.



- NOTES:
- 1- IF SPECIFIED IN BM. ASSEMBLE PARTS AS SHOWN.
 - 2- SEE SPEC. "A-B" & A-C FOR PROCESS.
 - 3- THERE CAN BE NO CREASES IN THE TUBES. (CREASES ARE SIGNS OR MARKS THAT ARE IN SOMETHING THAT BENDS)
 - 4- AFTER THE FOLDS IN THE TUBES, CANNOT BE ACCELERATED TO AREA EXCEEDING 30%.
 - 5- TUBES OF SUCTION, DISCHARGE AND PROCESS MUST BE FREE OF INK ON 15.8mm (5/8") FROM TOP OF THE TUBES AS SPEC. T.P.Co., A-B4.
 - 6- FOR SUPPLIER ENVIRONMENTAL REGULATORY REQUIREMENTS, SEE TECUMSEH GLOBAL SPEC. 08.

										ERA 91.60-96.60		ERA 86.60-91.60		ERA 72.10-77.10		ERA 14963573		LIBERACAO		DATE		THIRD ANGLE PROJECTION		 <h1>Tecumseh</h1>															
										B5		D4		E5		F8		AA		LT		LC				CHANGE		EC102387 03-05-22 94. R6.		EC98174 30-11-20 96. R6.		UNITS: mm		DRAWING SIZE: A2		0. A SYMBOLS AS PROCEDURE 2.01.031 TECUMSEH OF BRAZIL		NAME	
										AB																		★ = CATEGORY I ▲ = CATEGORY II ■ = CATEGORY III □ = CATEGORY IV		SALES COMPRESSOR		DCAE707		SCALE		PAGE			
																														1:2		1/1		DATE		REF.		FAMILY	
																														19-10-20						AE2			