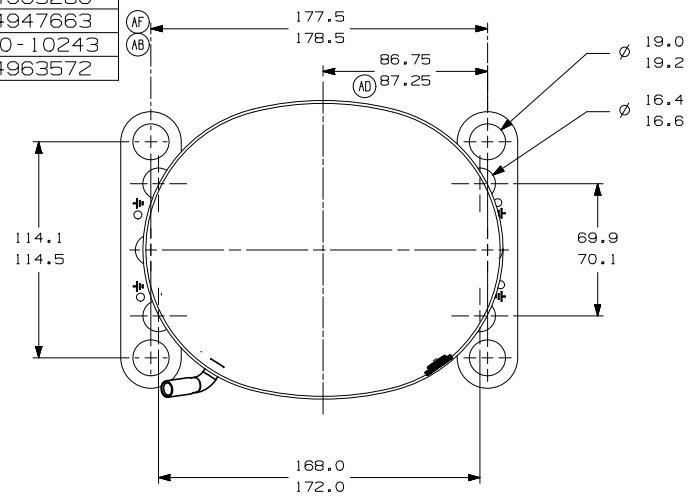
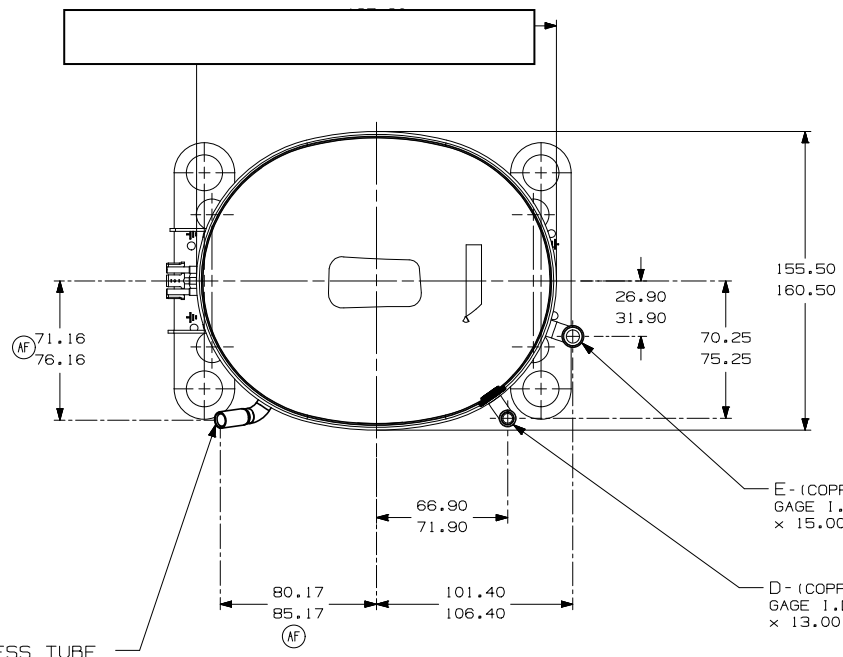


ITEM	PART NUMBER
A	320-10420
B	14963286
C	14947663
D	580-10243
E	14963572



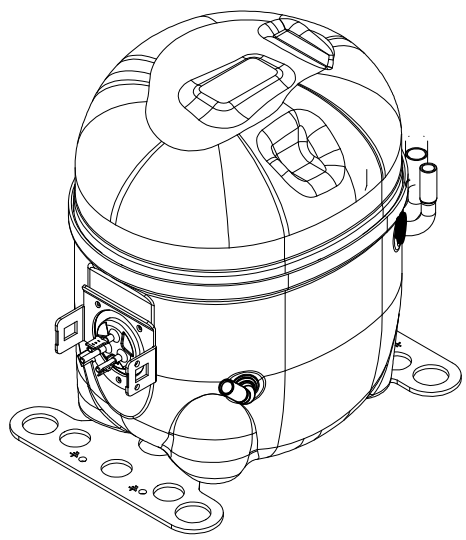
- AUXILIARY VIEW -
FASTENING DIMENSIONS



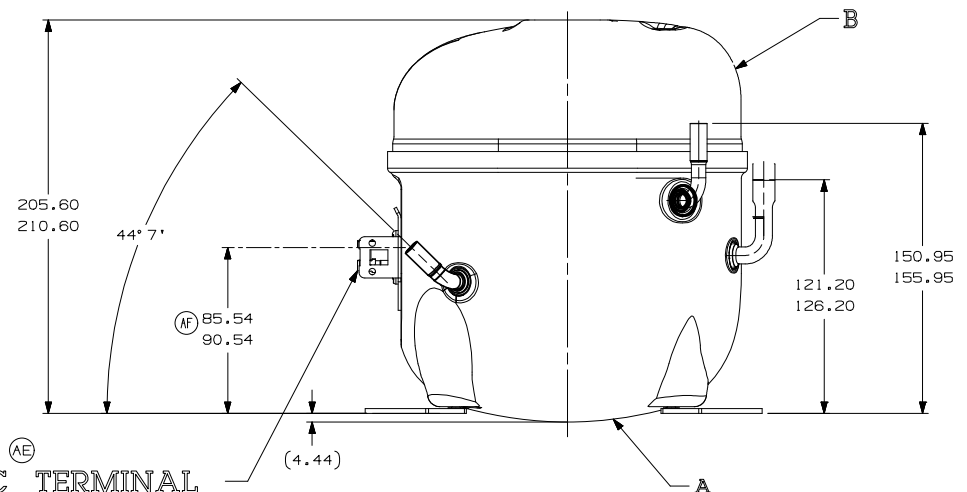
C - (COPPER) PROCESS TUBE
GAGE I.D. TO 6.45-6.55
× 15.00-17.00 DEEP.

E - (COPPER) SUCTION TUBE
GAGE I.D. TO 9.6-9.7
× 15.00-17.00 DEEP.

D - (COPPER) DISCHARGE TUBE
GAGE I.D. TO 6.45-6.55
× 13.00-15.00 DEEP.



HERMETIC TERMINAL
14945645 WITH
SPADE TERMINALS



- NOTES:
- 1- IF SPECIFIED IN BM. ASSEMBLY PARTS AS SHOWN.
 - 2- SEE SPEC. "A-B" & A-C FOR PROCESS.
 - 3- THERE CAN BE NO CREASES IN THE TUBES. (CREASES ARE SIGNS OR MARKS THAT ARE IN SOMETHING THAT BENDS)
 - 4- AFTER THE FOLDS IN THE TUBES, CANNOT BE ACCELERATED TO AREA EXCEEDING 30%.
 - 5- TUBES OF SUCTION, DISCHARGE AND PROCESS MUST BE FREE OF INK ON 15.8mm (5/8") FROM TOP OF THE TUBES AS SPEC. T.P.Co. A-B4.
 - 6- FOR SUPPLIER ENVIRONMENTAL REGULATORY REQUIREMENTS, SEE TECUMSEH GLOBAL SPEC. 08.

REV.	DESCRIPTION	DATE
01	ERA 91.60-96.60	03-08-2007
02	ERA 86.60-91.60	03-08-2007
03	ERA 72.10-77.10	03-08-2007
04	ERA 14963573	03-08-2007
05	ATUALIZADA NOTA DE AVISO	03-08-2007
06	ALTERADA MEDIDA ERA: 86, 75-80-25 E ADESC. NOTA 9	03-08-2007
07	RETIRADO DETALHE (AREA LENTA DE PINTURA)	03-08-2007
08	ALETRADO TUBO DE DESCARGA. ERA: 14963518	03-08-2007
09	LIBERACAO	03-08-2007

THIRD ANGLE PROJECTION

UNITS: mm

DRAWING SIZE: A2

DO NOT SCALE THIS DRAWING. ALL DIMENSIONS ARE TO BE TAKEN FROM THIS DRAWING. ALL DIMENSIONS ARE TO BE TAKEN FROM THIS DRAWING. ALL DIMENSIONS ARE TO BE TAKEN FROM THIS DRAWING.

NAME: SALES COMPRESSOR

PART NO.: DCAE689

DWN. PAULO S.	CK. RAMIRO	APR. WALTER CORREA	SCALE 1:2	PAGE 1/1
DATE 14-07-14	REF.		FAMILY	AE2