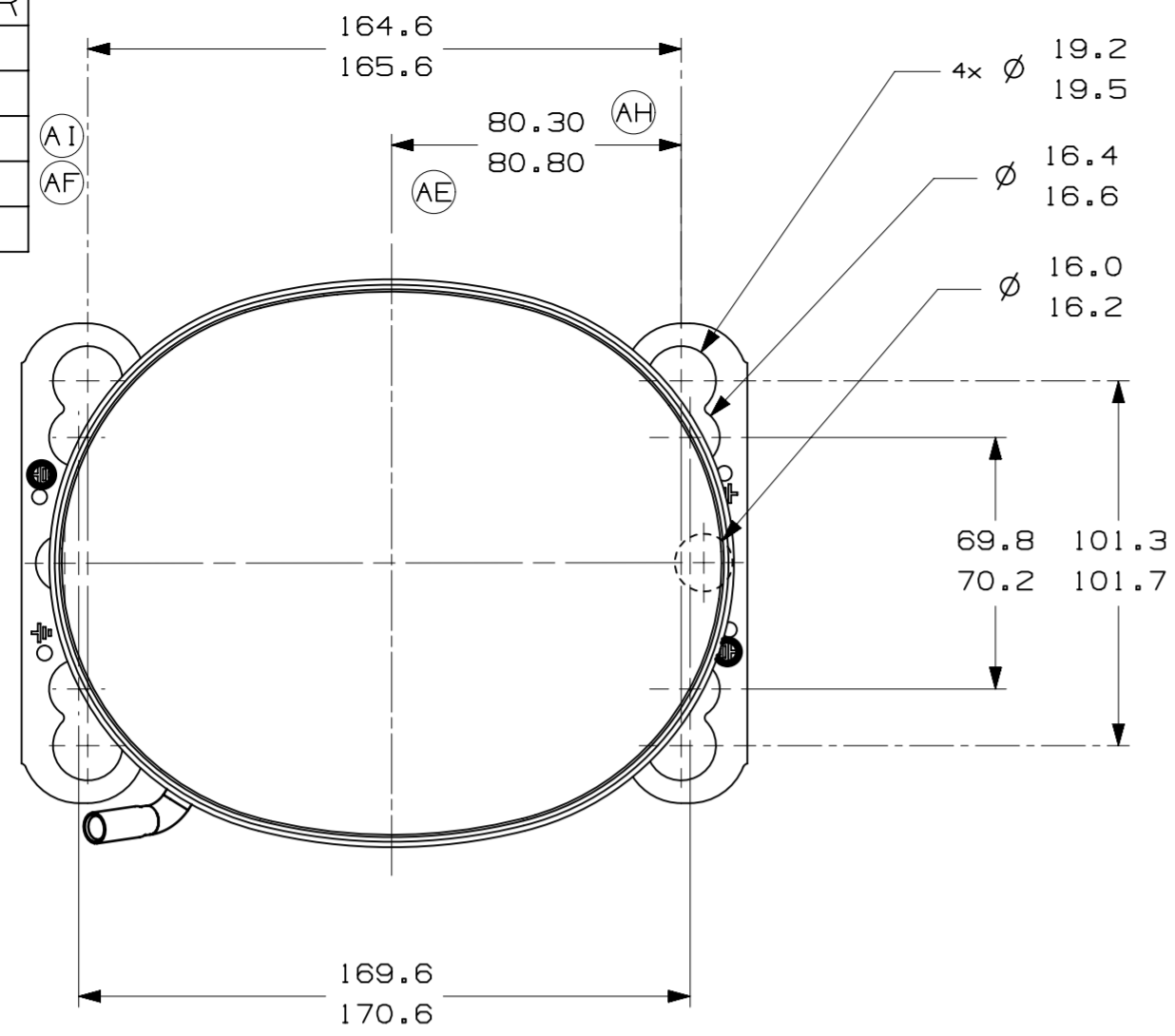
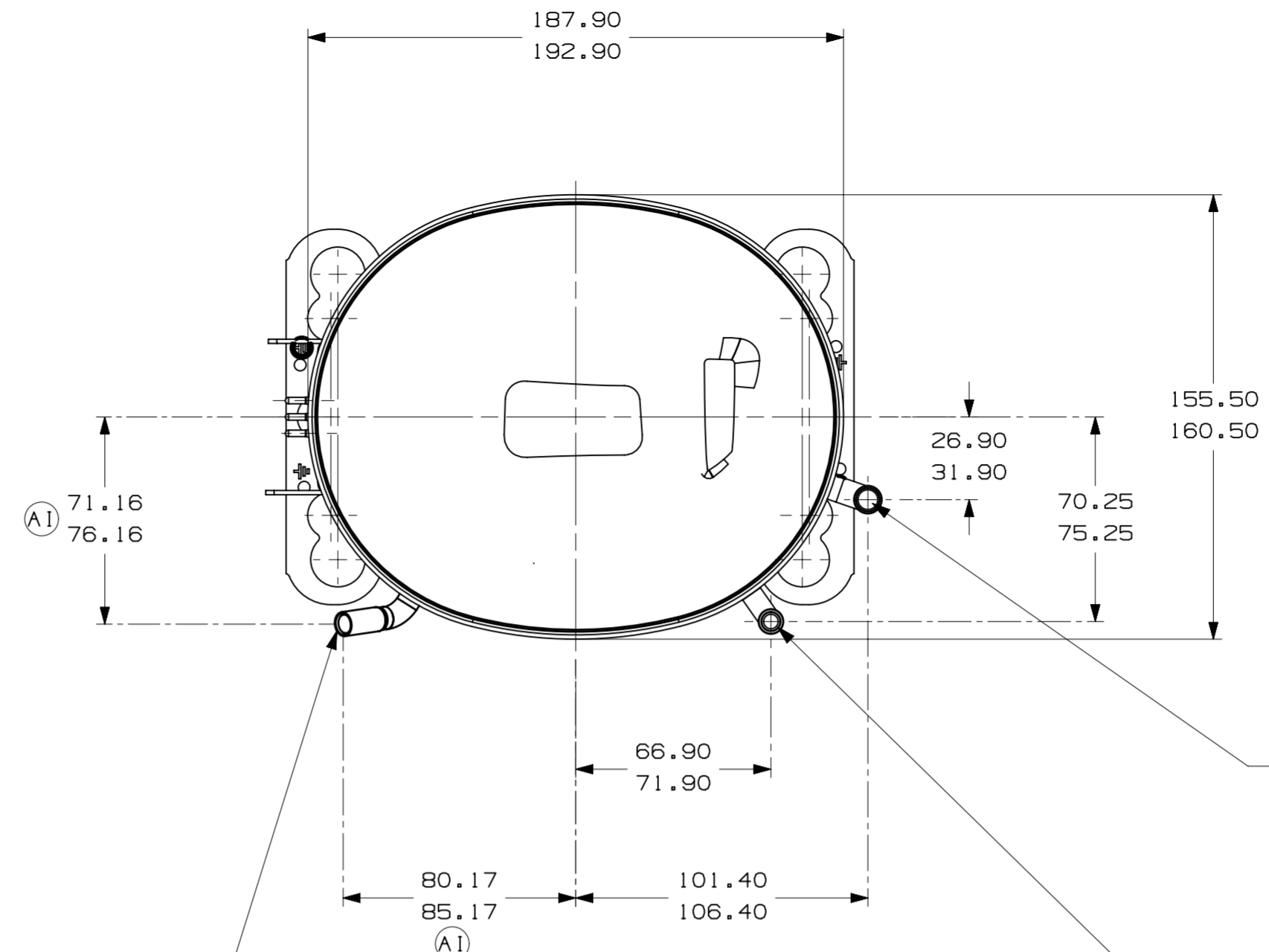


ITEM	PART NUMBER
A	320-10116
B	14963285
C	14947663
D	14963519
E	14963571



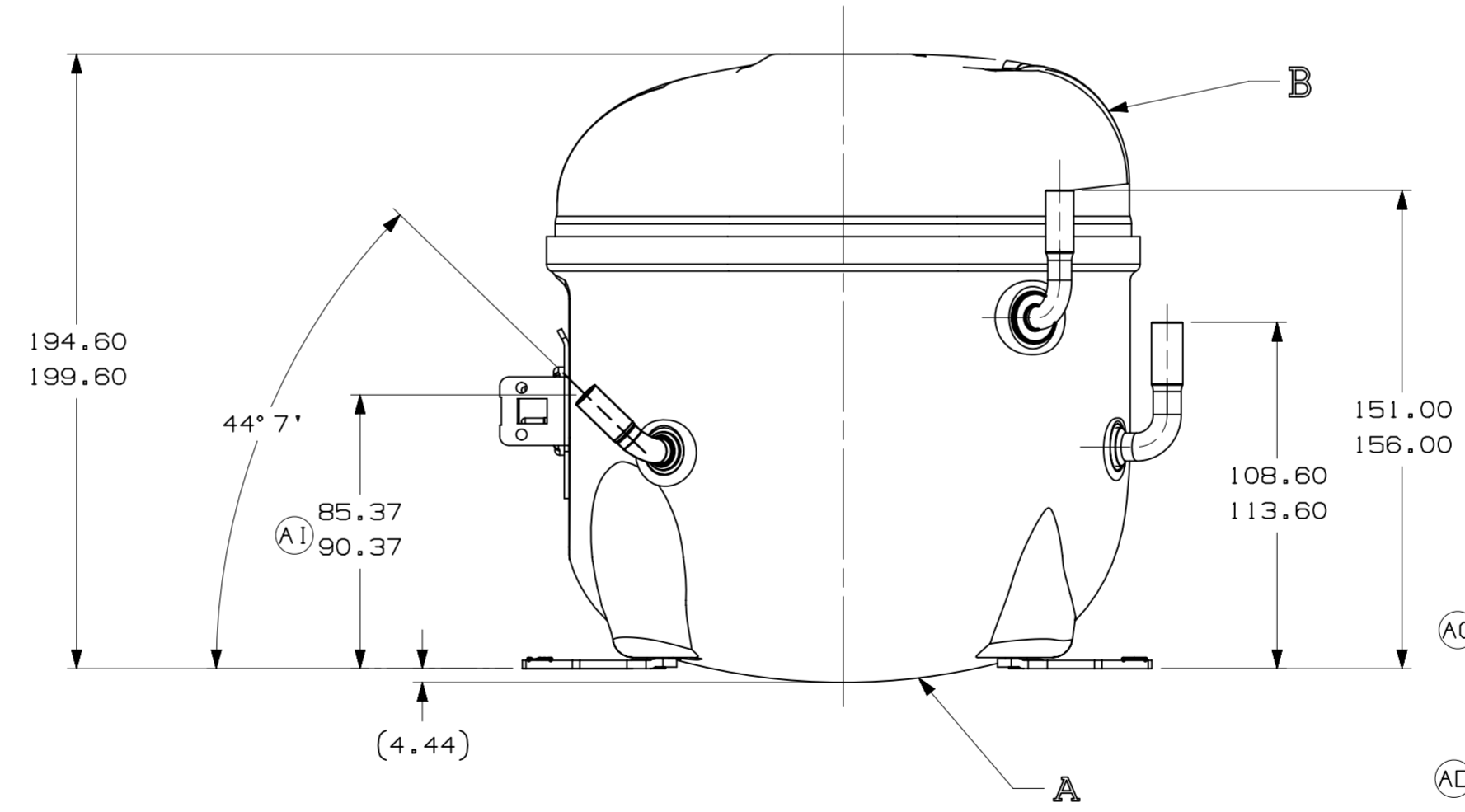
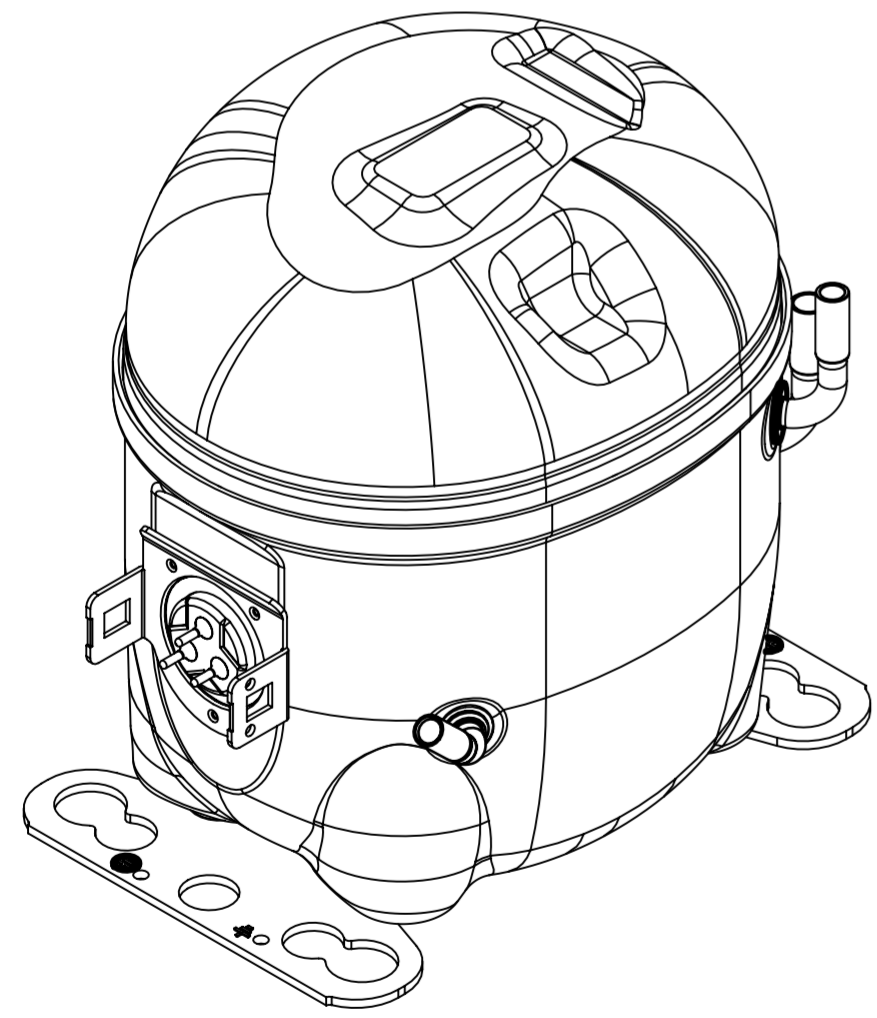
- AUXILIARY VIEW -  
FASTENING DIMENSIONS



E- (COPPER) SUCTION TUBE  
GAGE I.D. TO 8.00-8.10  
× 15.00-17.00 DEEP.

C- (COPPER) PROCESS TUBE  
GAGE I.D. TO 6.45-6.55  
× 15.00-17.00 DEEP.

D- (COPPER) DISCHARGE TUBE  
GAGE I.D. TO 6.45-6.55  
× 15.00-17.00 DEEP.



- NOTES:
- 1- IF SPECIFIED IN BM. ASSEMBLE PARTS AS SHOWN.
  - 2- SEE SPEC. "A-B" & A-C FOR PROCESS.
  - 3- THERE CAN BE NO CREASES IN THE TUBES. (CREASES ARE SIGNS OR MARKS THAT ARE IN SOMETHING THAT BENDS)
  - 4- AFTER THE FOLDS IN THE TUBES, CANNOT BE ACCELERATED TO AREA EXCEEDING 30%.
  - 5- TUBES OF SUCTION, DISCHARGE AND PROCESS MUST BE FREE OF INK ON 15.8mm (5/8") FROM TOP OF THE TUBES AS SPEC. T.P.Co. A-B4.
  - 6- FOR SUPPLIER ENVIRONMENTAL REGULATORY REQUIREMENTS, SEE TECUMSEH GLOBAL SPEC. 08.

THIRD ANGLE PROJECTION  
UNITS: mm  
DRAWING SIZE: A2  
DO NOT SCALE THIS DRAWING. ALL FERROUS MATERIALS MUST NOT BE MAGNETIZED AS RECEIVED OR AT COMPRESSOR ASSEMBLY

SALES COMPRESSOR  
DCAE196  
SCALE 1:2  
PAGE 1/1  
DATE 09/06/11  
FAMILY AE2

LT	LC	CHANGE	DATE
B5	ERA	91.60-96.60	EC102387 02-05-22 SM. R6.
D4	ERA	86.60-91.60	EC80775 14-02-18 PS. R6.
E5	ERA	72.10-77.10	EC70368 06-06-18 AMP. WC.
F8	ERA	14963573	EC59687 03-03-15 PS. R6.
A/2	ALTERADA MEDIDA	ERA: 82.30-82.80	EC48188 01-01-14 PS. R6.
F/6	RETIRADO DETALHE (AREA ISENTA DE PINTURA)	E ACRESC. NOTA 6	EC52840 AMP. WF. 13-01-13
AG	RETIRADO DETALHE (AREA ISENTA DE PINTURA)		EC44036 08/06/12 PS. A.M
F/7	ALTERADO TUBO D	ERA: 14963519	EC41721 07/11/11 J.B / W.C
F/7	ALTERADA MEDIDA	ERA: 80.30-80.80	EC38630 22/08/11 J.B / A.M
A/2	ADICIONADO NOTA		
A/2	REVISADA	NOTAS 3 E 4	
A/2	ACRESCENTADA	NOTAS 3 E 4	
A/1	ALTERADO NOME	ERA: BRDOND	
AA	LIBERACAO		