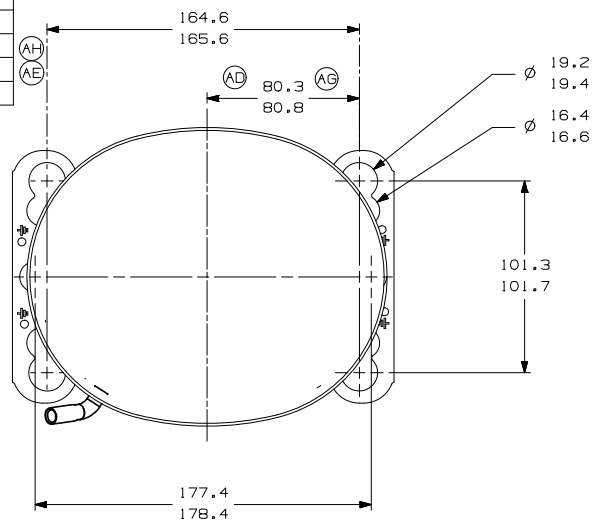
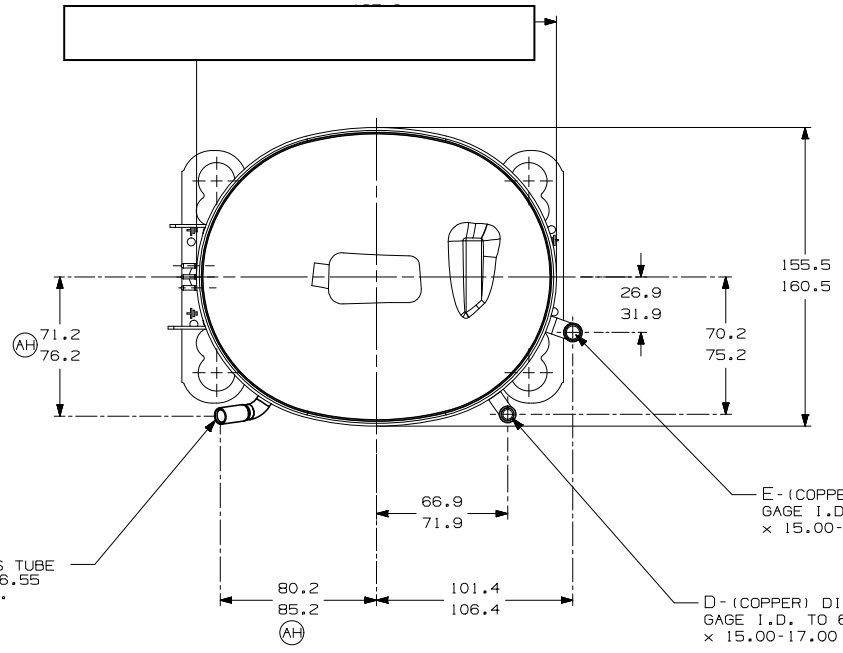


ITEM	PART NUMBER
A	320-10150
B	14963286
C	14947663
D	580-10244
E	14963571



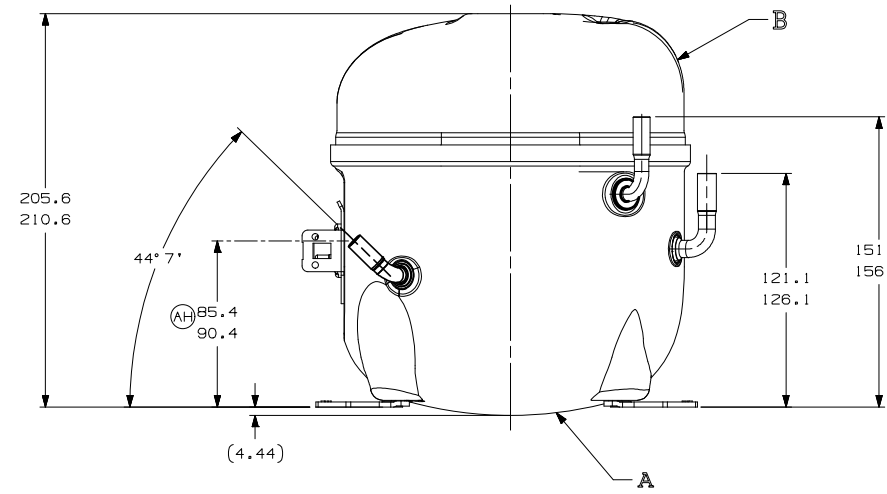
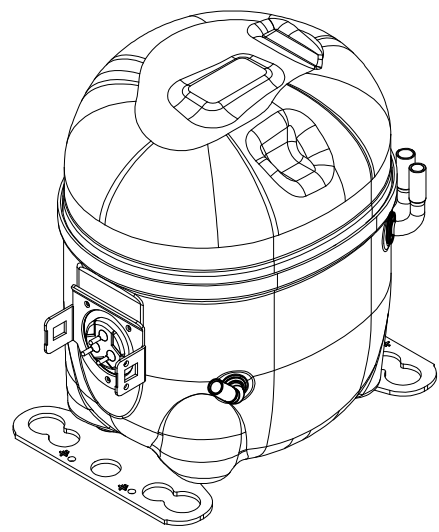
- AUXILIARY VIEW -
FASTENING DIMENSIONS



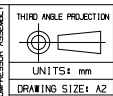
C - (COPPER) PROCESS TUBE
GAGE I.D. TO 6.45-6.55
x 15.00-17.00 DEEP.

E - (COPPER) SUCTION TUBE
GAGE I.D. TO 8.00-8.10
x 15.00-17.00 DEEP.

D - (COPPER) DISCHARGE TUBE
GAGE I.D. TO 6.45-6.55
x 15.00-17.00 DEEP.



- NOTES:
- 1- IF SPECIFIED IN BM. ASSEMBLE PARTS AS SHOWN.
 - 2- SEE SPEC. "A-B" & A-C FOR PROCESS.
 - 3- THERE CAN BE NO CREASES IN THE TUBES. (CREASES ARE SIGNS OR MARKS THAT ARE IN SOMETHING THAT BENDS)
 - 4- AFTER THE FOLDS IN THE TUBES, CANNOT BE ACCELERATED TO AREA EXCEEDING 30%.
 - 5- TUBES OF SUCTION, DISCHARGE AND PROCESS MUST BE FREE OF INK ON 15.8mm (5/8") FROM TOP OF THE TUBES AS SPEC. T.P.Co. A-B4.
 - 6- FOR SUPPLIER ENVIRONMENTAL REGULATORY REQUIREMENTS, SEE TECUMSEH GLOBAL SPEC. 08.



UNITS: mm
DRAWING SIZE: A2

tecumseh

NAME: SALES COMPRESSOR			PART NO.: DCAE118	
DWN.:	CK.:	APR.:	SCALE:	PAGE:
J. BARBANO	ANDRE MARTINEZ	WALTER CORREA	1:2	1/1
DATE:	REF.:	FAMILY:	AE2	
11/11/11				

REV.	DESCRIPTION	DATE
B5	ERA 91.60-96.60	EC102387
D4	ERA 86.40-91.40	EC08075
E5	ERA 72.10-77.10	EC70369
F8	ERA 14963573	EC50887
A/2	ALTERADA MEDIDA	EC46186
F/6	ERA: 82.30-82.60	EC50840
F/6	E ACHESC. NOTA 9	EC44026
AG	RETRABO DE DETALHE	EC41096
AF	DE PINTURA	EC11096
AE	F/8	EC08075
AD	F/7	EC46186
AC	A/2	EC50840
AB	A/2	EC44026
AA	A	EC41096
LT	LC	DATE

THIS DRAWING OR PRINT IS THE PROPERTY OF TECUMSEH DO BRASIL LTDA. AND CONTAINS PROPRIETARY AND CONFIDENTIAL INFORMATION. IT IS TO BE USED ONLY FOR THE PURPOSES SPECIFIED HEREIN. IT IS TO BE RETURNED TO TECUMSEH DO BRASIL IMMEDIATELY UPON COMPLETION OF THE WORK FOR WHICH IT WAS ISSUED. IT SHALL NOT BE COPIED OR TO ANY EXTENT WITH- OUT THE WRITTEN CONSENT OF TECUMSEH DO BRASIL. THIS DRAWING IS THE PROPERTY OF TECUMSEH DO BRASIL AND SHALL BE RETURNED BY THE RESPICENT LATTERS REQUEST PROMPTLY AFTER SUCH REQUEST IS MADE.

DO NOT SCALE THIS DRAWING. ALL FER- TURE DIMENSIONS SHALL BE TAKEN FROM THE DRAWING AS RECEIVED OR AT COMPRESSOR ASSEMBLY.