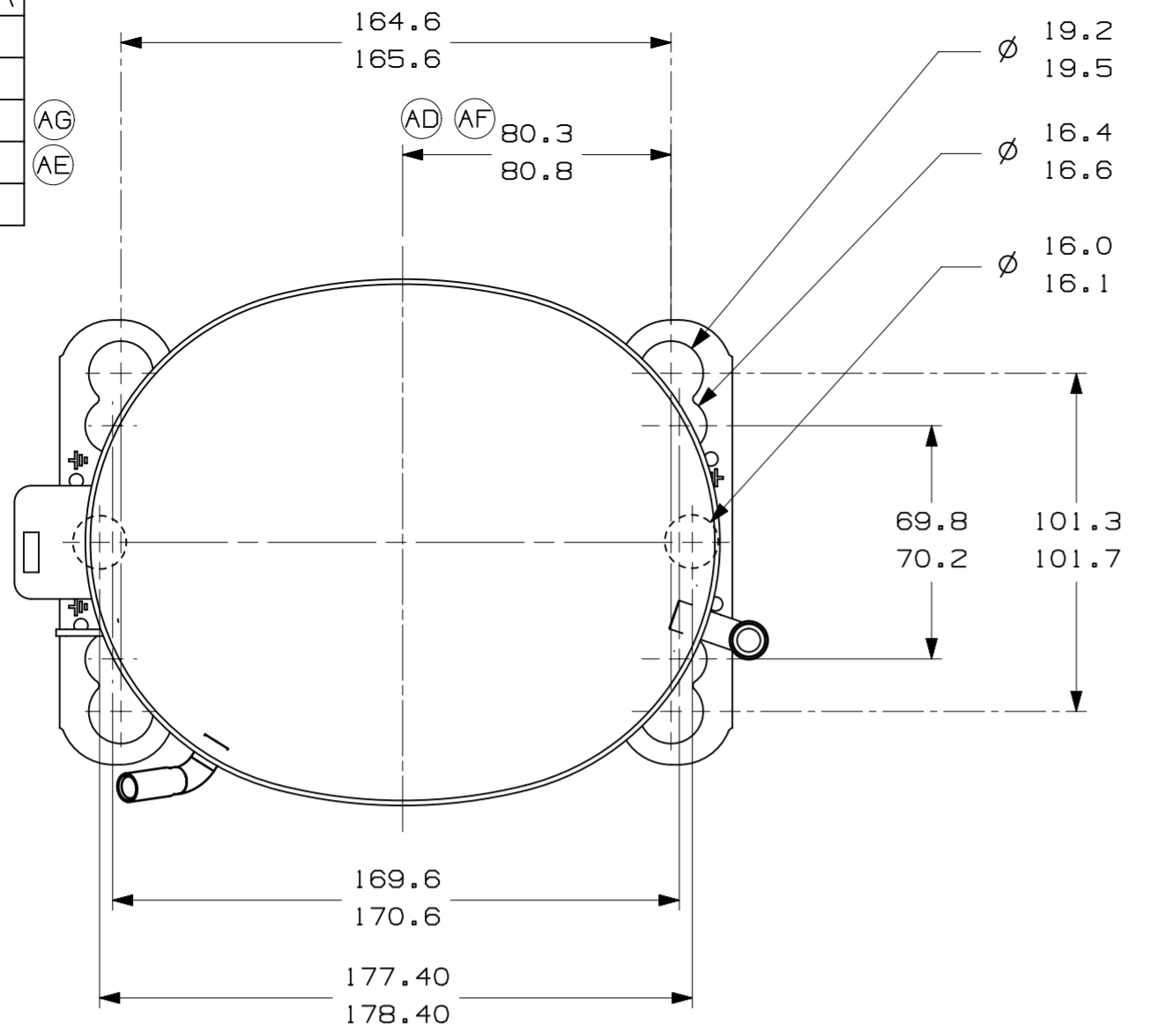
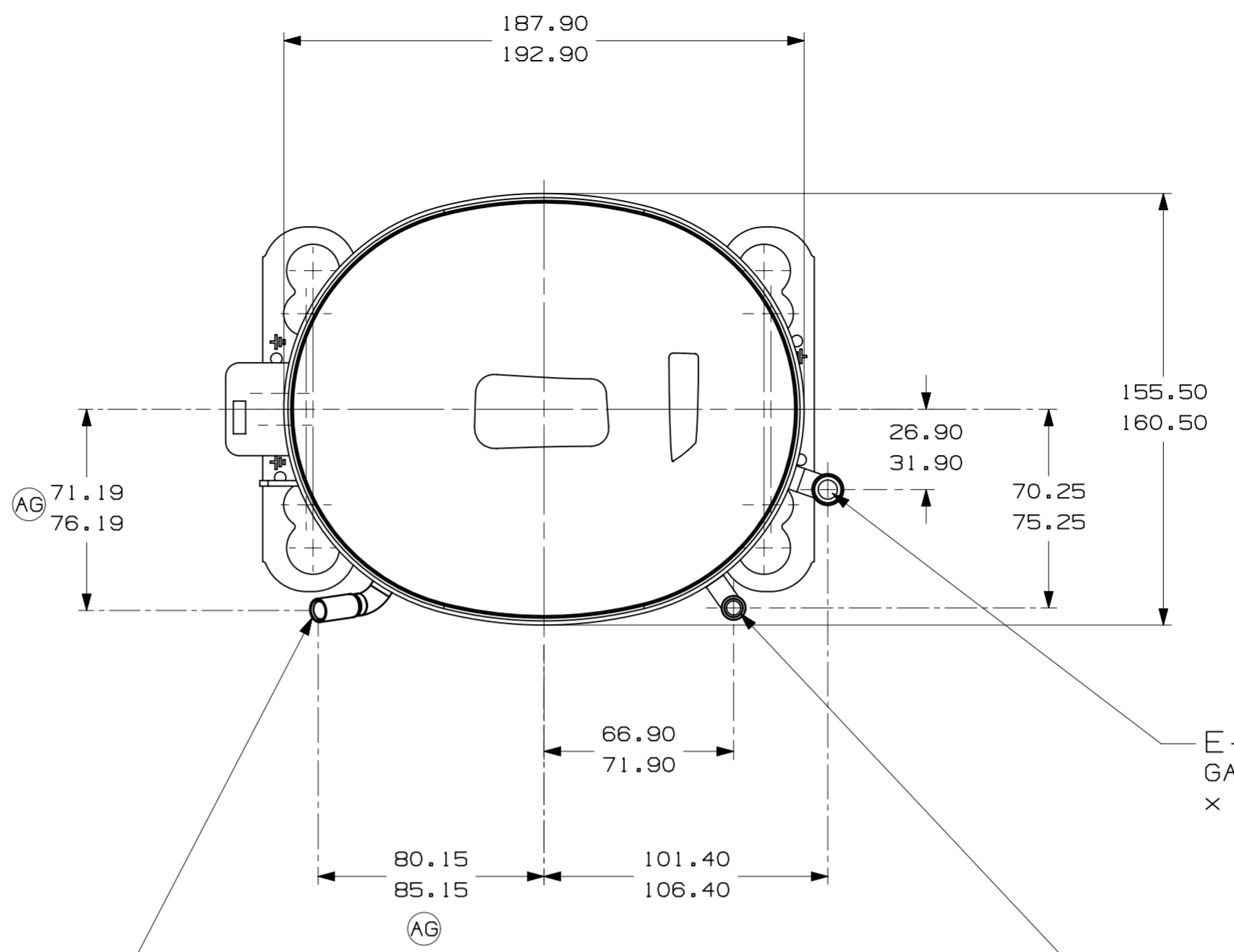


ITEM	PART NUMBER
A	320-10177
B	14963285
C	14947663
D	580-10244
E	14963572



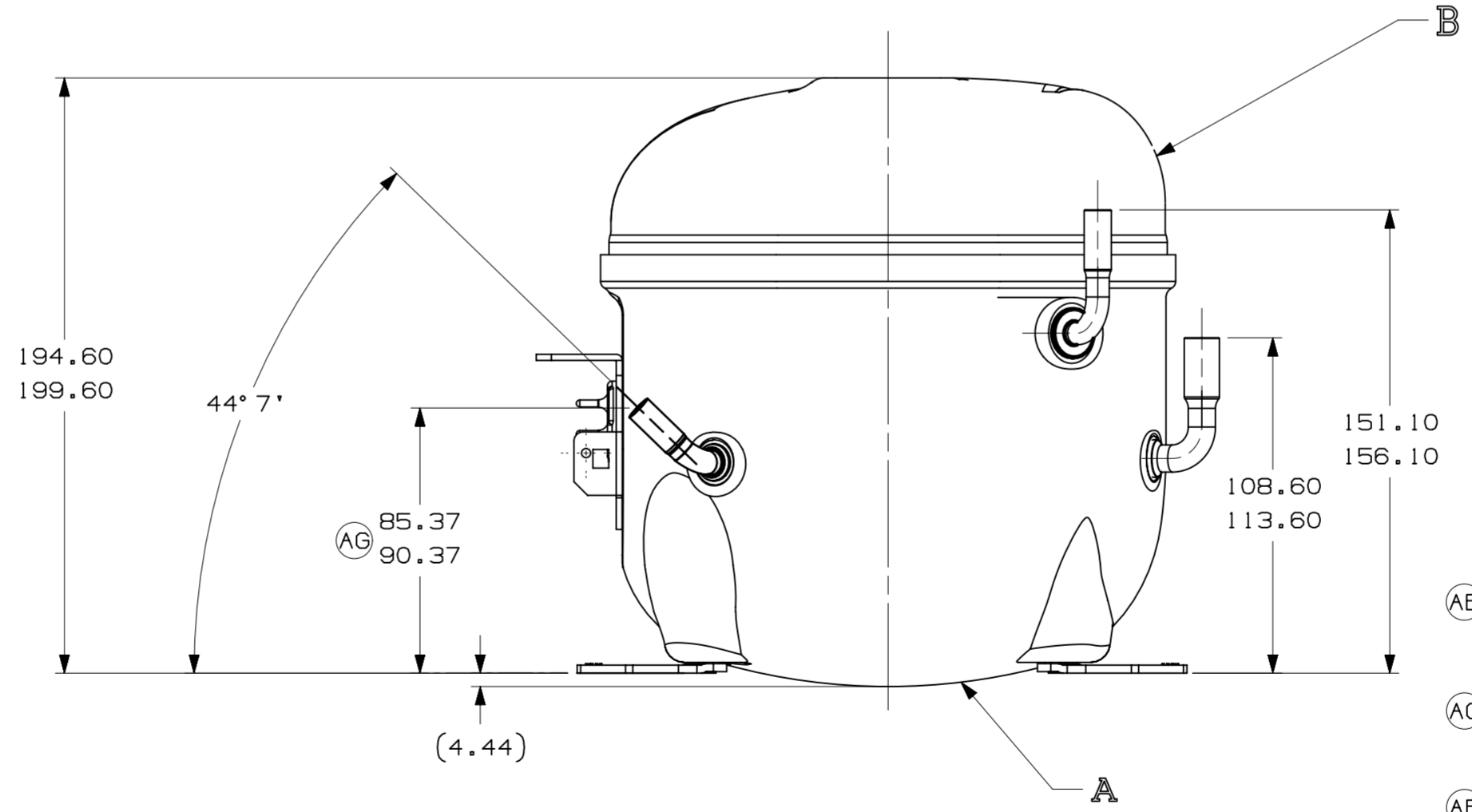
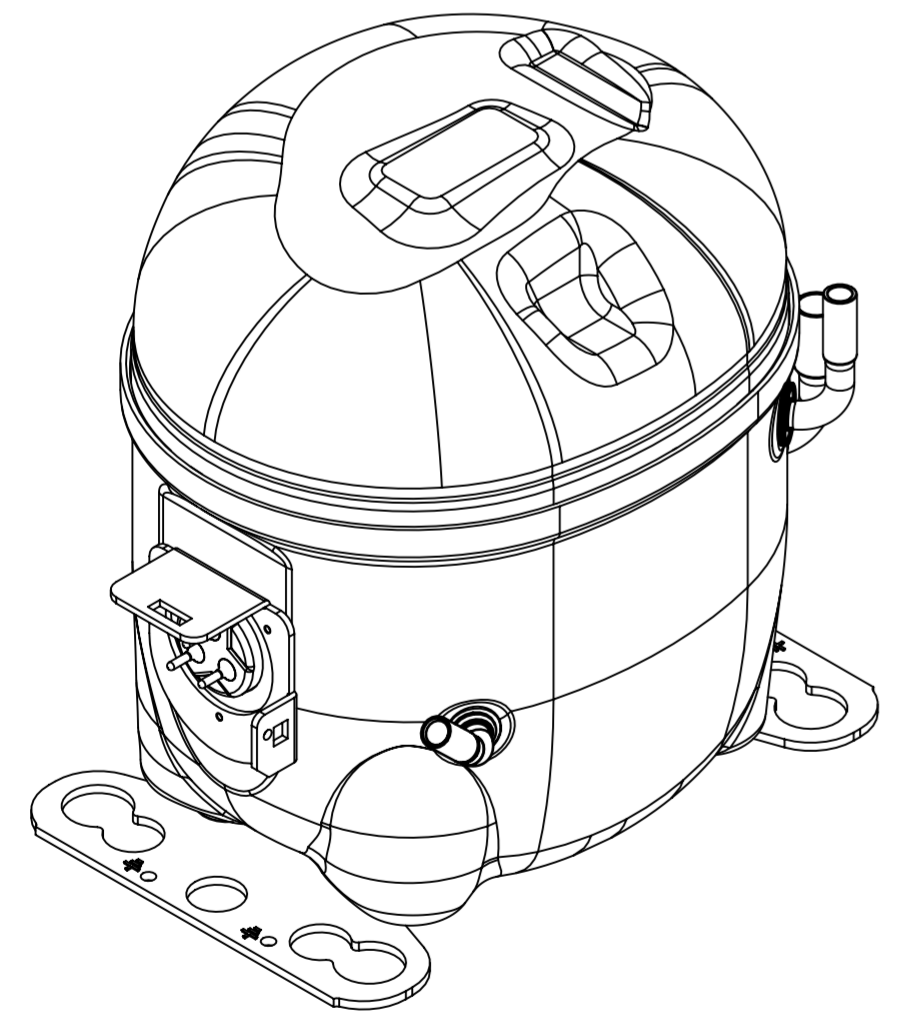
- AUXILIARY VIEW -
FASTENING DIMENSIONS



C - (COPPER) PROCESS TUBE
GAGE I.D. TO 6.45-6.55
× 15.00-17.00 DEEP.

E - (COPPER) SUCTION TUBE
GAGE I.D. TO 9.60-9.70
× 15.00-17.00 DEEP.

D - (COPPER) DISCHARGE TUBE
GAGE I.D. TO 6.45-6.55
× 15.00-17.00 DEEP.



- NOTES:
- 1- IF SPECIFIED IN BM, ASSEMBLE PARTS AS SHOWN.
 - 2- SEE SPEC. "A-B" & A-C FOR PROCESS.
 - 3- THERE CAN BE NO CREASES IN THE TUBES. (CREASES ARE SIGNS OR MARKS THAT ARE IN SOMETHING THAT BENDS).
 - 4- AFTER THE FOLDS IN THE TUBES, CANNOT BE ACCELERATED TO AREA EXCEEDING 30%.
 - 5- TUBES OF SUCTION, DISCHARGE AND PROCESS MUST BE FREE OF INK ON 15.8mm (5/8") FROM TOP OF THE TUBES AS SPEC. T.P.Co. A-B4.
 - 6- FOR SUPPLIER ENVIRONMENTAL REGULATORY REQUIREMENTS, SEE TECUMSEH GLOBAL SPEC. 08.

LT	LC	CHANGE	DATE
AA		LIBERACAO	15/12/11 J.B / A.M
AB		ACRESCENTADA NOTAS 3 E 4	08/06/12 A.M
A/2		REVISADA NOTAS 3 E 4	31-01-14 R.G.
AC A/2		ADICIONADO NOTA	13-09-13
AD F/7		ALTERADA MEDIDA ERA180.30-80.80	03-03-15 R.G.
AE F/8		ALTERADO TUBO D ERA: 14963519	03-03-15 R.G.
AF F/7		ALTERADA MEDIDA ERA: 182.30-82.80 E ACRESC. NOTA 6	14-02-18 R.G.
F/8		ERA 14963573	02-05-22 R.G.
E5		ERA 72.10-77.10	
D4		ERA 86.60-91.60	
B5		ERA 91.60-96.60	

THIRD ANGLE PROJECTION

UNITS: mm

DRAWING SIZE: A2

0. A SYMBOLS AS PROCEDURE 2.01.031 TECUMSEH OF BRAZIL

NAME: SALES COMPRESSOR

PART NO.: DCAE206

SCALE: 1:2

PAGE: 1/1

DATE: 01/12/11

REF.

FAMILY: AE2