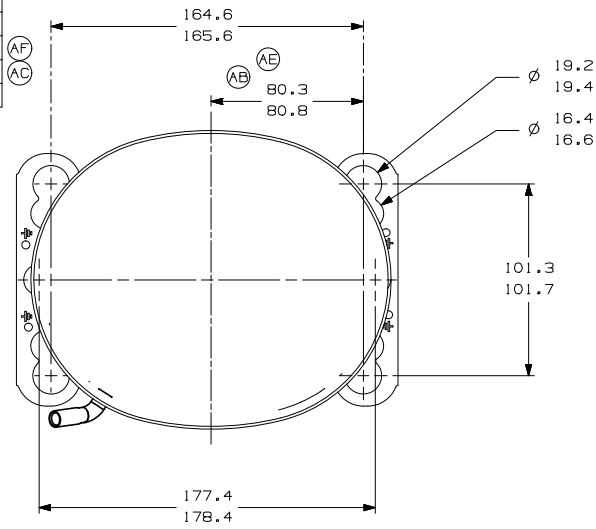
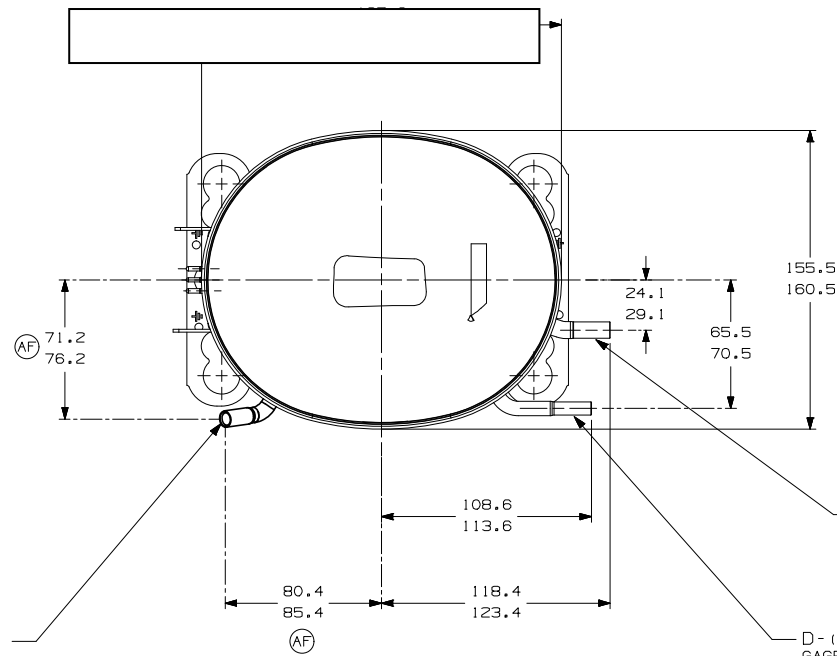


ITEM	PART NUMBER
A	320-10262
B	14963286
C	14947663
D	580-10246
E	580-10016



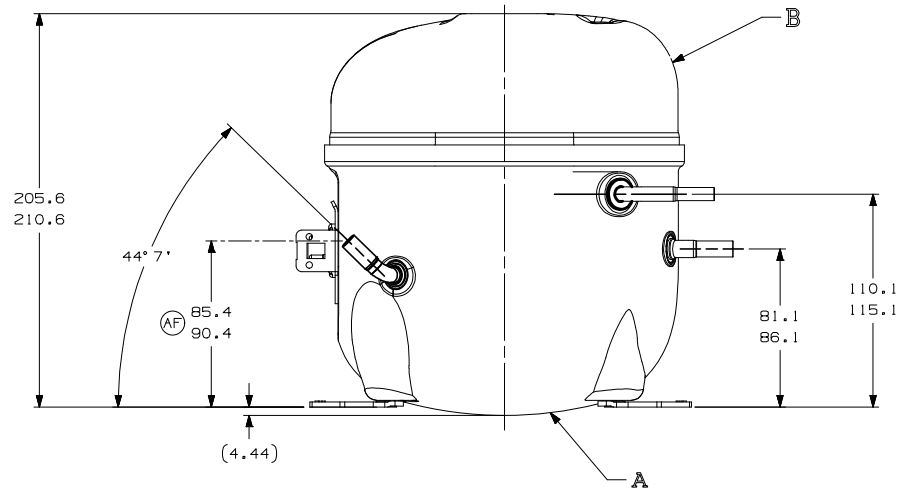
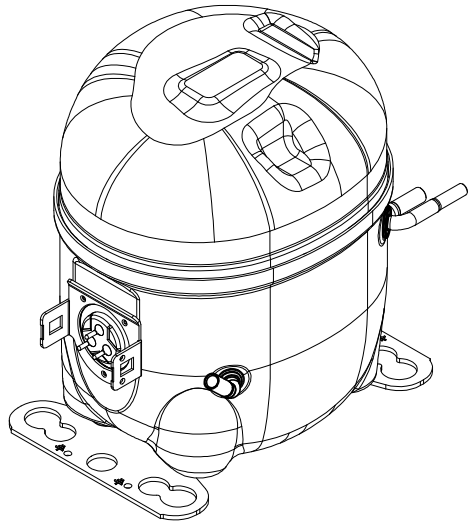
- AUXILIARY VIEW -
FASTENING DIMENSIONS



C - (COPPER) PROCESS TUBE
GAGE I.D. TO 6.45-6.55
× 15.00-17.00 DEEP.

E - (COPPER) SUCTION TUBE
GAGE I.D. TO 6.45-6.55
× 15.00-17.00 DEEP.

D - (COPPER) DISCHARGE TUBE
GAGE I.D. TO 4.92-5.02
× 15.00-17.00 DEEP.



NOTES:

- 1- IF SPECIFIED IN BM. ASSEMBLE PARTS AS SHOWN.
- 2- SEE SPEC, "A-B" & A-C FOR PROCESS.
- 3- THERE CAN BE NO CREASES IN THE TUBES. (CREASES ARE SIGNS OR MARKS THAT ARE IN SOMETHING THAT BENDS)
- 4- AFTER THE FOLDS IN THE TUBES, CANNOT BE ACCELERATED TO AREA EXCEEDING 30%.
- 5- FOR SUPPLIER ENVIRONMENTAL REGULATORY REQUIREMENTS, SEE TECUMSEH GLOBAL SPEC. 08.

REV.	DESCRIPTION	DATE
01	EC102387 92-02-15 RG	02-15-92
02	EC8075 92-02-15 RG	02-15-92
03	EC70088 92-02-15 RG	02-15-92
04	EC59697 93-03-15 RG	03-15-93
05	EC48188 93-01-14 RG	01-14-93
06	EC47879 93-03-12 RG	03-12-93

THIRD ANGLE PROJECTION
UNITS: mm
DRAWING SIZE: A2
 * = CATEGORY I
 ■ = CATEGORY II
 ■ = CATEGORY III
 ■ = CATEGORY IV

SALES COMPRESSOR
 DWN. PAULO S.
 CK. RAMIRO G.
 APR. WALTER CORREA
 REF.
 DATE: 29/08/12
 SCALE: 1:2
 PAGE: 1/1
 FAMILY: AE2
 PART NO.: DCAE217