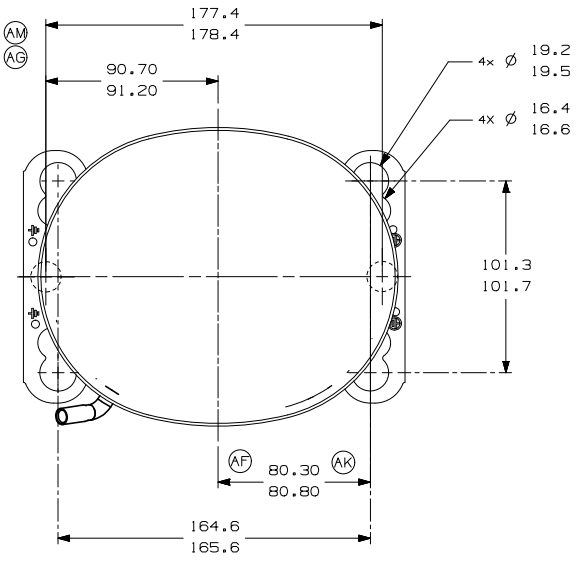
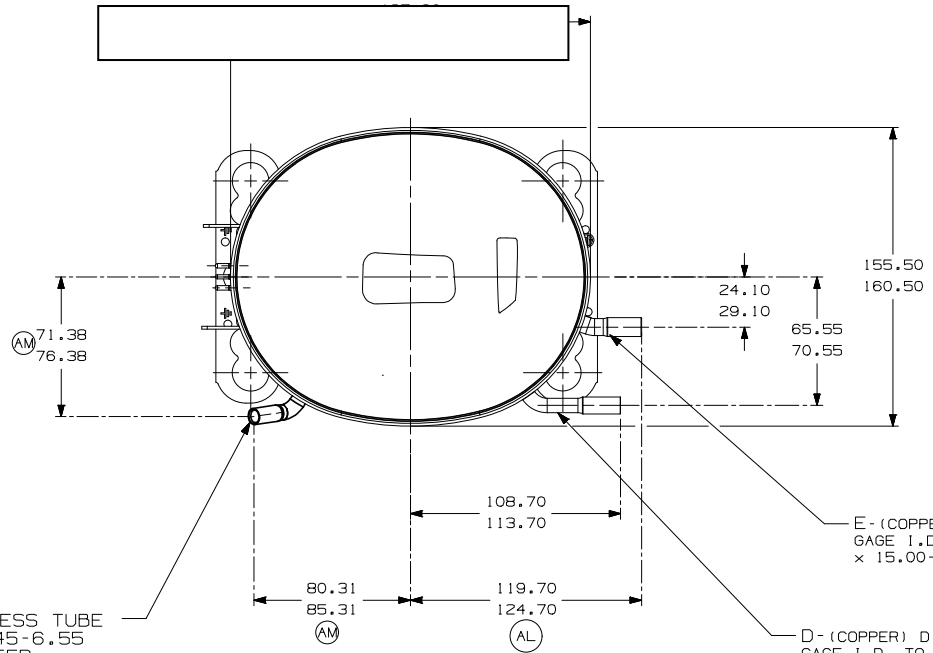


ITEM	PART NUMBER
A	14963658
B	14963285
C	14947663
D	580-10244
E	580-10019



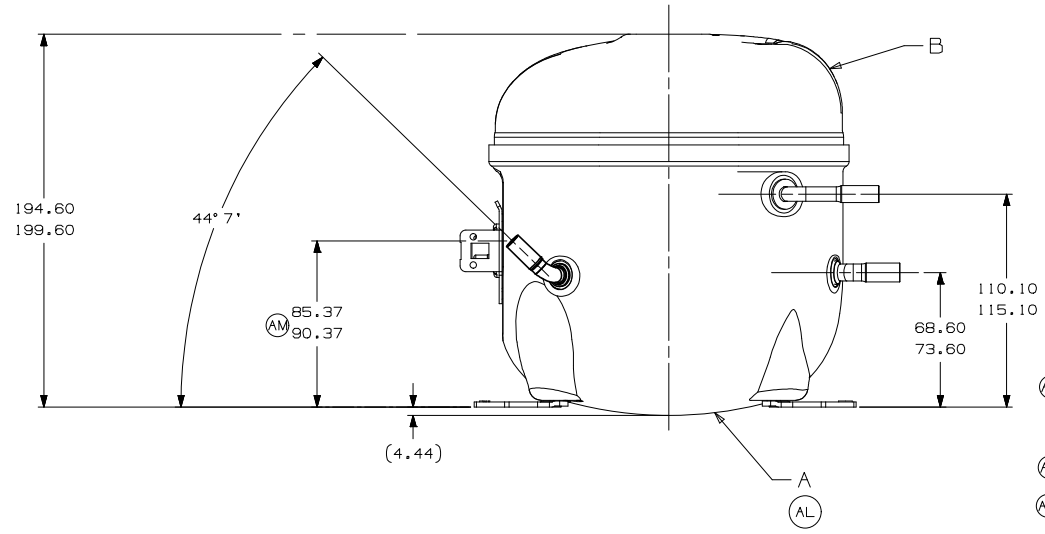
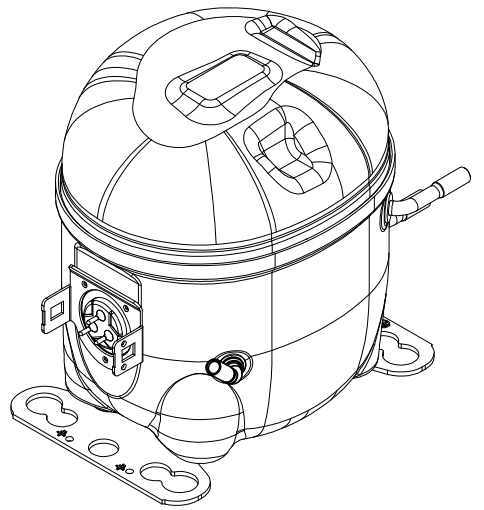
- AUXILIARY VIEW -
FASTENING DIMENSIONS



C - (COPPER) PROCESS TUBE
GAGE I.D. TO 6.45-6.55
× 13.00-15.00 DEEP.

E - (COPPER) SUCTION TUBE
GAGE I.D. TO 8.00-8.10
× 15.00-17.00 DEEP.

D - (COPPER) DISCHARGE TUBE
GAGE I.D. TO 6.45-6.55
× 13.00-15.00 DEEP.



- NOTES:
- 1- IF SPECIFIED IN BM, ASSEMBLE PARTS AS SHOWN.
 - 2- SEE SPEC. "A-B" & A-C FOR PROCESS. (CREASES ARE SIGNS OR MARKS THAT ARE IN SOMETHING THAT BENDS)
 - 3- THERE CAN BE NO CREASES IN THE TUBES. (CREASES ARE SIGNS OR MARKS THAT ARE IN SOMETHING THAT BENDS)
 - 4- AFTER THE FOLDS IN THE TUBES, CANNOT BE ACCELERATED TO AREA EXCEEDING 30%.
 - 5- TUBES OF SUCTION, DISCHARGE AND PROCESS MUST BE FREE OF INK ON 15.8mm (5/8") FROM TOP OF THE TUBES AS SPEC. T.P.Co. A-B4.
 - 6- FOR SUPPLIER ENVIRONMENTAL REGULATORY REQUIREMENTS, SEE TECUMSEH GLOBAL SPEC. 08.

REV	DATE	DESCRIPTION
B5	ERA 91.60-96.60	
D4	ERA 86.60-91.60	
ES	ERA 72.10-77.10	
F8	ERA 14963573	
3A	ATUALIZADA 14963558	
A/2	ALTERADA MEDIDA 14-02-19	
AK	E/6	RETORNADO DETALHE [AREA] [SENTA] [DE PINTURA]
AG	F/8	ALTERADO TUBO D [ERA]: 14963519
AF	D/7	ALTERADA MEDIDA [ERA]: 80-80,80
AE	A/2	ADICIONADO NOTA
AD	A/2	REV/SADA NOTAS 3 E 4
AC	D/2	ALTERADO TUBO DE SUCCAO [ERA]: 14963571
AB	A/1	ALTERADO NOME [ERA]: BRUCIND
AA		LIBERACAO

THIRD ANGLE PROJECTION

UNITS: mm

DRAWING SIZE: A2

REV. A SYMBOLS AS PROCEDURE 2.01.001 TECUMSEH OF BRAZIL

★ = CATEGORY I

▲ = CATEGORY II

■ = CATEGORY III

□ = CATEGORY IV

PARTY NO. DCAE178 (AB)

SALES COMPRESSOR

DATE: 23-02-11

SCALE: 1:2

PAGE: 1/1

FAMILY: AE2