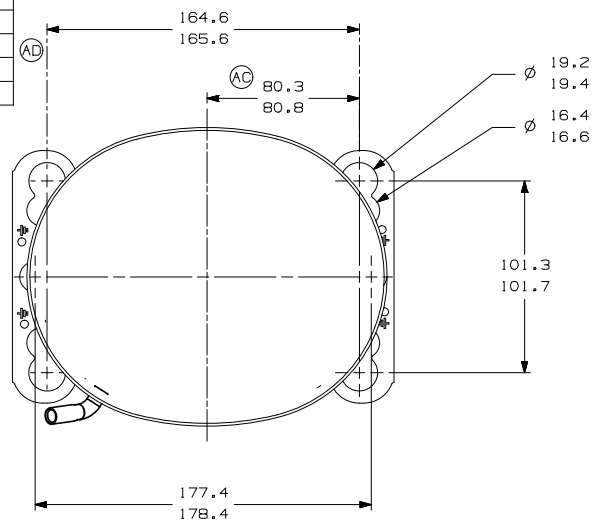
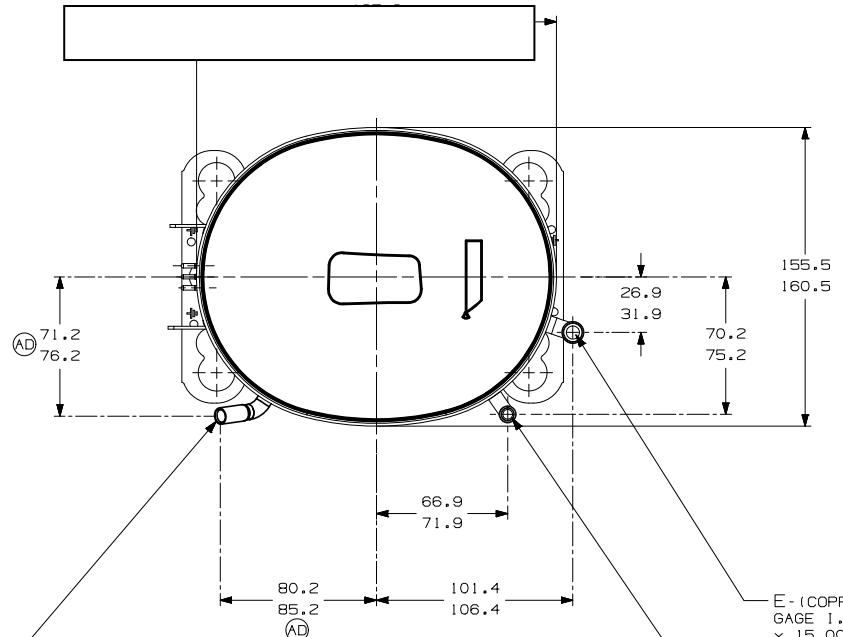


ITEM	PART NUMBER
A	320-10552
B	14963286
C	14947663
D	580-10244
E	14963572



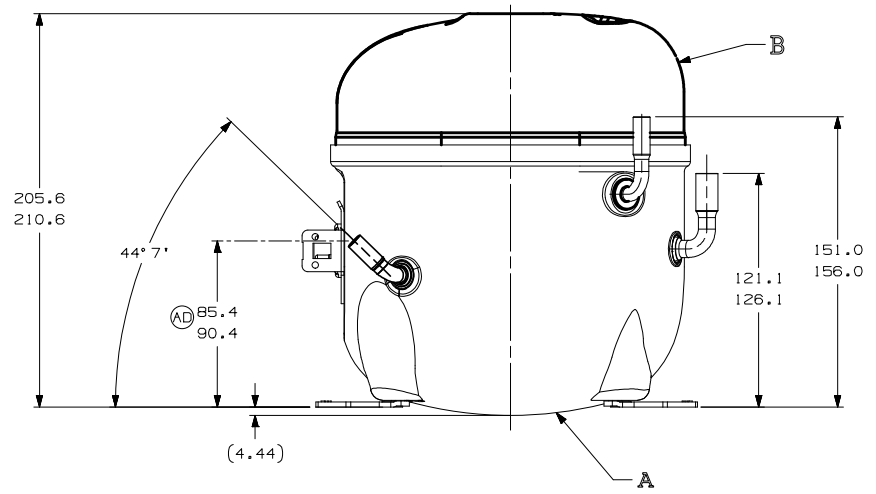
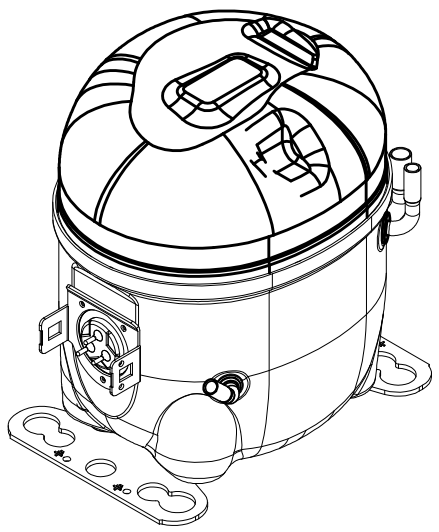
- AUXILIARY VIEW -  
FASTENING DIMENSIONS



C- (COPPER) PROCESS TUBE  
GAGE I.D. TO 6.45-6.55  
× 15.00-17.00 DEEP.

E- (COPPER) SUCTION TUBE  
GAGE I.D. TO 9.60-9.70  
× 15.00-17.00 DEEP.

D- (COPPER) DISCHARGE TUBE  
GAGE I.D. TO 6.45-6.55  
× 15.00-17.00 DEEP.



- NOTES:
- 1- IF SPECIFIED IN BM. ASSEMBLE PARTS AS SHOWN.
  - 2- SEE SPEC. "A-B" & A-C FOR PROCESS.
  - 3- THERE CAN BE NO CREASES IN THE TUBES. (CREASES ARE SIGNS OR MARKS THAT ARE IN SOMETHING THAT BENDS)
  - 4- AFTER THE FOLDS IN THE TUBES, CANNOT BE ACCELERATED TO AREA EXCEEDING 30%.
  - 5- TUBES OF SUCTION, DISCHARGE AND PROCESS MUST BE FREE OF INK ON 15.8mm (5/8") FROM TOP OF THE TUBES AS SPEC. TECUMSEH A-B4.
  - 6- FOR SUPPLIER ENVIRONMENTAL REGULATORY REQUIREMENTS, AS PER TECUMSEH SPEC. GLOBAL SPEC. #08.

REV.	DATE	BY	CHK.	DESCRIPTION
B5	ERA 91-60-96-60			EC102987
D4	ERA 96-60-91-60			03-05-22
E5	ERA 72-10-77-10			14-02-19
F8	ERA 14963572			08-08-15
AC	F7 ALTERADA MEDIDA ERA: 82-30-82-60			EC80775
AB	..			EC70368
AA	LIBERACAO			EC67299
LT	LC			08-08-15

THIRD ANGLE PROJECTION

UNITS: mm

DRAWING SIZE: A2

DO NOT SCALE THIS DRAWING. ALL DIMENSIONS SHALL BE TAKEN FROM THIS DRAWING. ALL PARTS AND MATERIALS SHALL BE AS RECEIVED OR AT COMPRESSOR ASSEMBLY AS RECEIVED AT COMPRESSOR ASSEMBLY.

SALES COMPRESSOR

PARTY NO. DCAE697

DWN. A. MARCOS	CK. RAMIRO	APR. WALTER CORREA	SCALE 1:2	PAGE 1/1
DATE 12-08-15	REF.		FAMILY AE2	