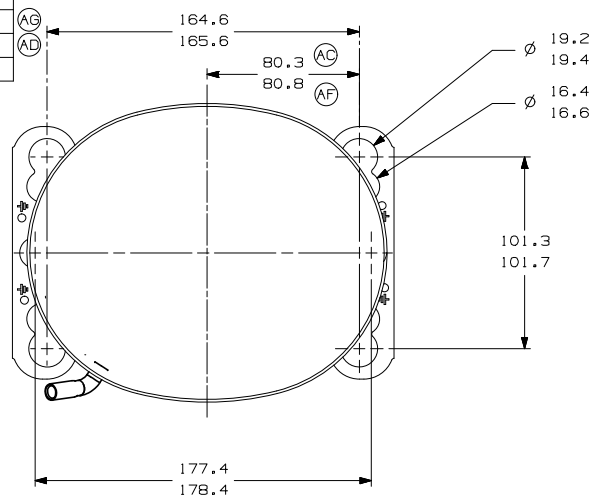
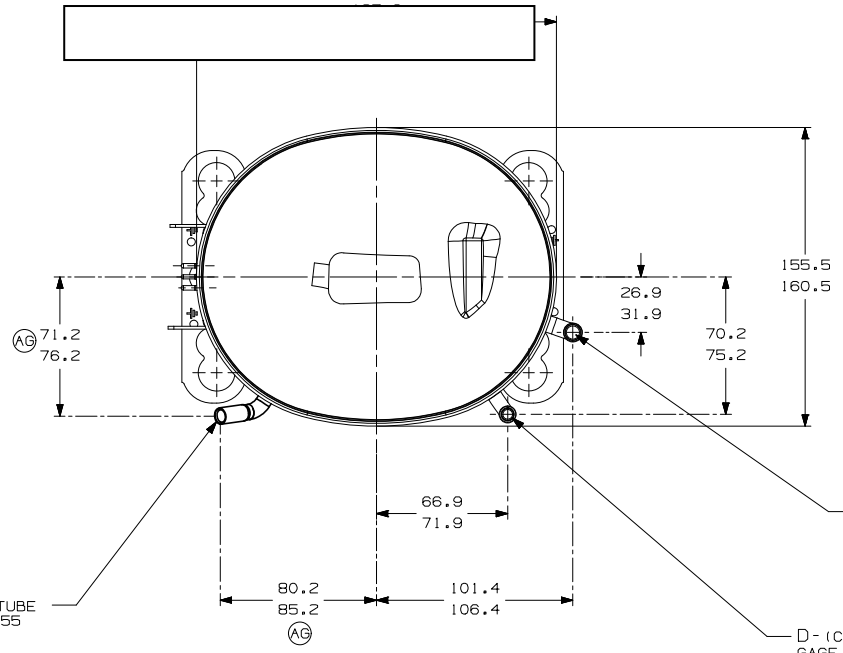


ITEM	PART NUMBER
A	320-10227
B	14963286
C	14947663
D	580-10243
E	14963571



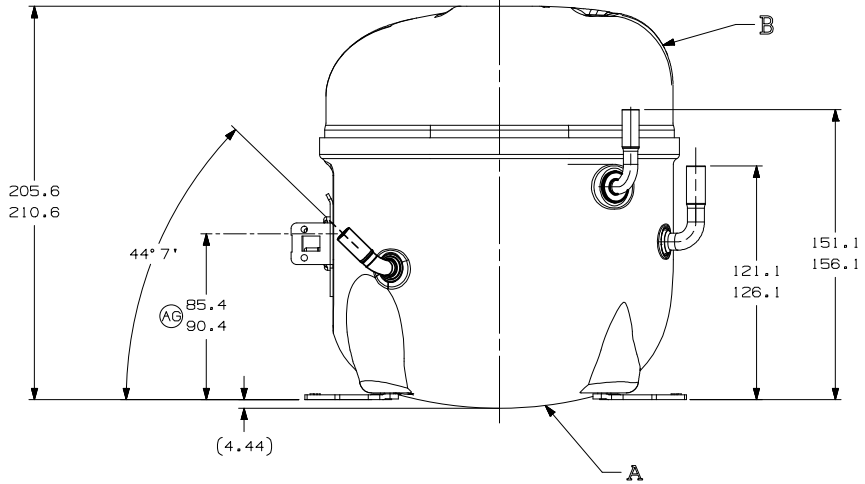
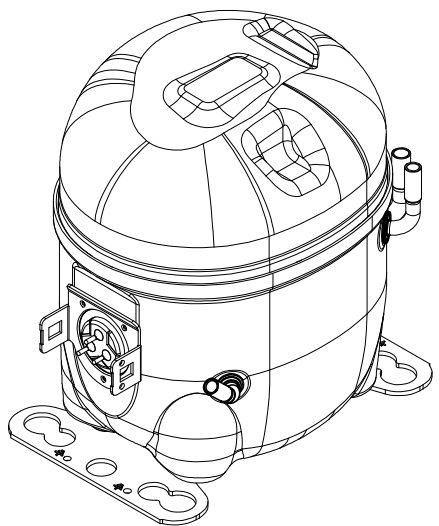
- AUXILIARY VIEW -
FASTENING DIMENSIONS



C - (COPPER) PROCESS TUBE
GAGE I.D. TO 6.45-6.55
x 15.00-17.00 DEEP.

E - (COPPER) SUCTION TUBE
GAGE I.D. TO 8.00-8.10
x 15.00-17.00 DEEP.

D - (COPPER) DISCHARGE TUBE
GAGE I.D. TO 6.45-6.55
x 15.00-17.00 DEEP.

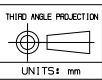


NOTES:

- IF SPECIFIED IN BM, ASSEMBLE PARTS AS SHOWN.
- SEE SPEC. "A-B" & A-C FOR PROCESS.
- THERE CAN BE NO CREASES IN THE TUBES (CREASES ARE SIGNS OR MARKS THAT ARE IN SOMETHING THAT BENDS).
- AFTER THE FOLDS IN THE TUBES, CANNOT BE ACCELERATED TO AREA EXCEEDING 30%.
- TUBES OF SUCTION, DISCHARGE AND PROCESS MUST BE FREE OF INK ON 15.8mm (5/8") FROM TOP OF THE TUBES AS SPEC. T.P.Co. A-B4.
- FOR SUPPLIER ENVIRONMENTAL REGULATORY REQUIREMENTS, SEE TECUMSEH GLOBAL SPEC. 08.

(AB)

(AF)



UNITS: mm
DRAWING SIZE: A2

DO NOT SCALE THIS DRAWING. ALL PARTS SHALL BE IDENTIFIED BY PART NUMBER AND QUANTITY. ALL PARTS SHALL BE IDENTIFIED BY PART NUMBER AND QUANTITY. ALL PARTS SHALL BE IDENTIFIED BY PART NUMBER AND QUANTITY.



NAME			PART NO.	
SALES COMPRESSOR			DCAE112	
DWN. PAULO S.	CK. ANDRE MARTINEZ	APR. WALTER CORREA	SCALE 1:2	PAGE 1/1
DATE 28/03/12	REF.		FAMILY	AE2

REV.	DESCRIPTION	DATE	BY	CHK.
B5	ERA 91.60-96.60	02/03/12	AF	AE
D4	ERA 86.40-91.40	02/03/12	AF	AE
E5	ERA 72.10-77.10	14/02/13	AF	AE
F8	ERA 14963573	08/08/15	AF	AE
A/2	ALTERADA MEDIDA (AREA LISENTE)	08/07/15	AF	AE
F/6	RETIRADO DETALHE (AREA LISENTE DE PINTURA)	03/09/15	AF	AE
AD	ALTERADO TUBO D	05/04/12	AF	AE
AG	ALTERADA MEDIDA (ERA: 80.3-80.8)	13/09/13	AF	AE
AB	A/2 ADICIONADO NOTA			
AA	LIBERACAO			