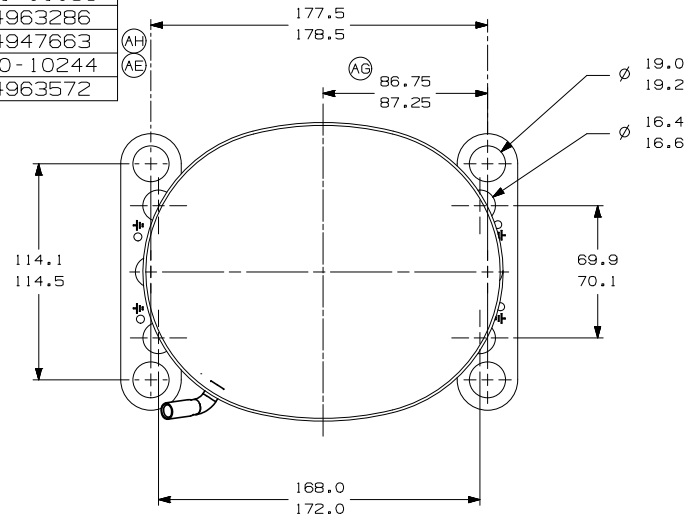
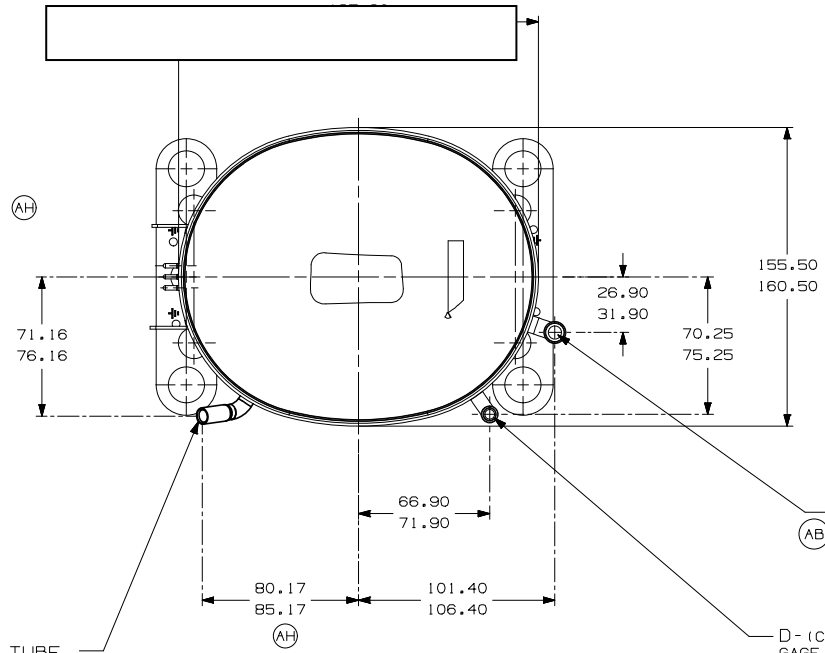


ITEM	PART NUMBER
A	320-10156
B	14963286
C	14947663
D	580-10244
E	14963572



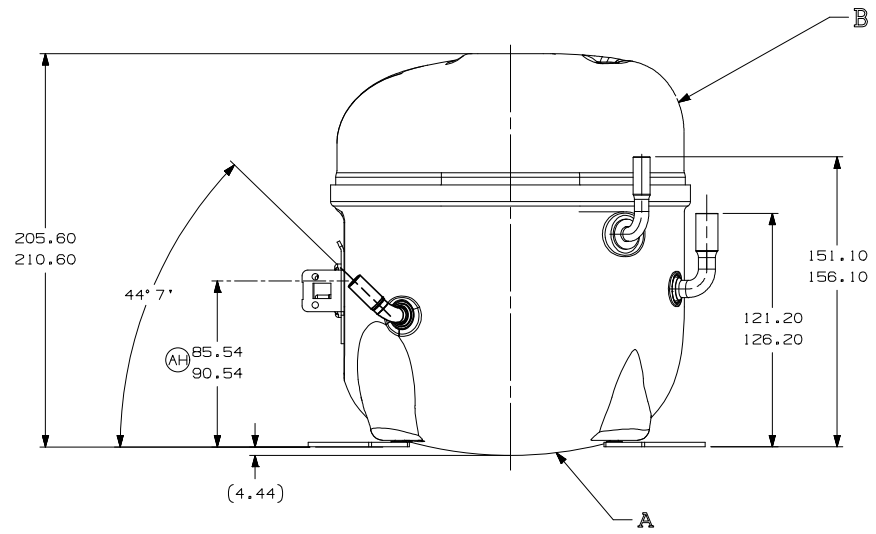
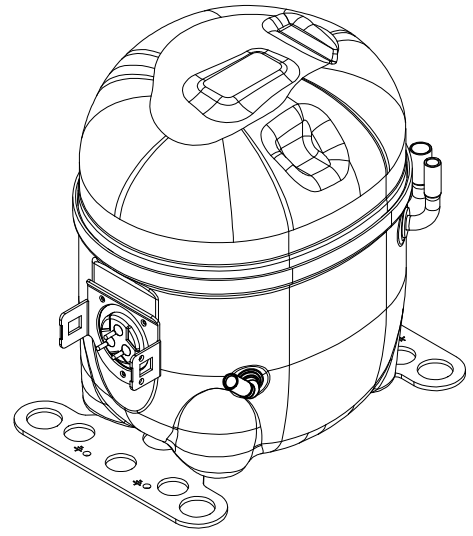
- AUXILIARY VIEW -
FASTENING DIMENSIONS



C - (COPPER) PROCESS TUBE
GAGE I.D. TO 6.45-6.55
× 15.00-17.00 DEEP.

E - (COPPER) SUCTION TUBE
GAGE I.D. TO 9.6-9.7
× 15.00-17.00 DEEP.

D - (COPPER) DISCHARGE TUBE
GAGE I.D. TO 6.45-6.55
× 13.00-15.00 DEEP.



- NOTES:
- 1- IF SPECIFIED IN BM. ASSEMBLE PARTS AS SHOWN.
 - 2- SEE SPEC. "A-B" & A-C FOR PROCESS.
 - 3- THERE CAN BE NO CREASES IN THE TUBES. (CREASES ARE SIGNS OR MARKS THAT ARE IN SOMETHING THAT BENDS)
 - 4- AFTER THE FOLDS IN THE TUBES, CANNOT BE ACCELERATED TO AREA EXCEEDING 30%.
 - 5- TUBES OF SUCTION, DISCHARGE AND PROCESS MUST BE FREE OF INK ON 15.8mm (5/8") FROM TOP OF THE TUBES AS SPEC. T.P.Co. A-B4.
 6. FOR SUPPLIER ENVIRONMENTAL REGULATORY REQUIREMENTS, SEE TECUMSEH GLOBAL SPEC. 08.

REV.	DATE	DESCRIPTION
B5	ERA 91.60-96.60	
D4	ERA 66.60-91.60	
E5	ERA 72.10-77.10	
F8	ERA 14963573	
A/2	ALTERADA MEDIDA	
F/7	EMPRE. 75-0822	
E	AGRESS. INTRA G	
..	RETIRADO DETALHE	
..	DE PINTURA	
F/B	ALTERADO TUBO D	
ERA	14963519	
A/2	ADDED NOTE	
A/2	REV/SAIDA	
NOTAS 3 E 4		
A/2	ACRESCENTADA	
NOTAS 3 E 4		
D2	CORRIGIDO Ø INT.	
TUBO SUCCAO ERA:		
98.00-81.10		
..	LIBERACAO	
LT	LC	CHANGE
DATE		

THIRD ANGLE PROJECTION

UNITS: mm

DRAWING SIZE: A2

REV. A SYMBOLS AS PROCEDURE 2.01.031 TECUMSEH OF BRAZIL

★ = CATEGORY I
 ■ = CATEGORY II
 ▲ = CATEGORY III
 ● = CATEGORY IV

NAME: SALES COMPRESSOR

PART NO.: DCAE199

DWN. J. BARBANO CK. ANDRE MARTINEZ APR. WALTER CORREA

SCALE: 1:2

DATE: 22/09/11 REF. FAMILY: AE2

PAGE: 1/1

