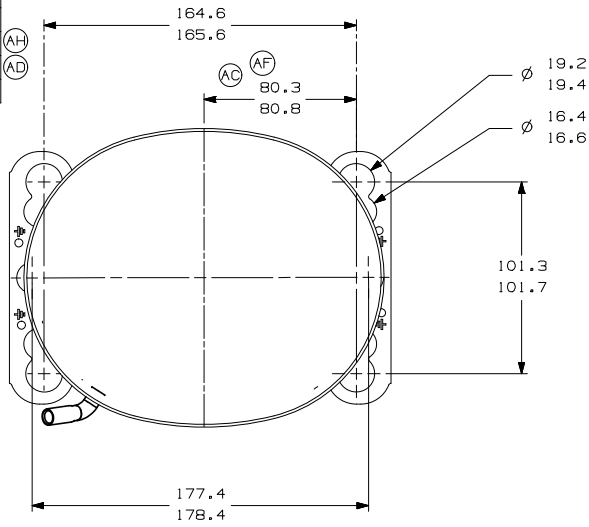
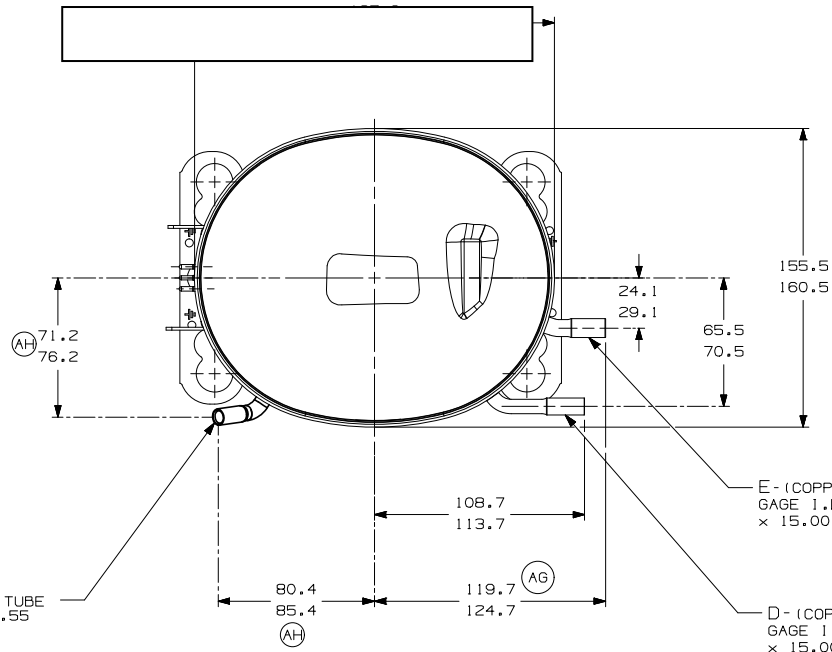


ITEM	PART NUMBER
A	320-10240
B	14963286
C	14947663
D	580-10244
E	580-10019



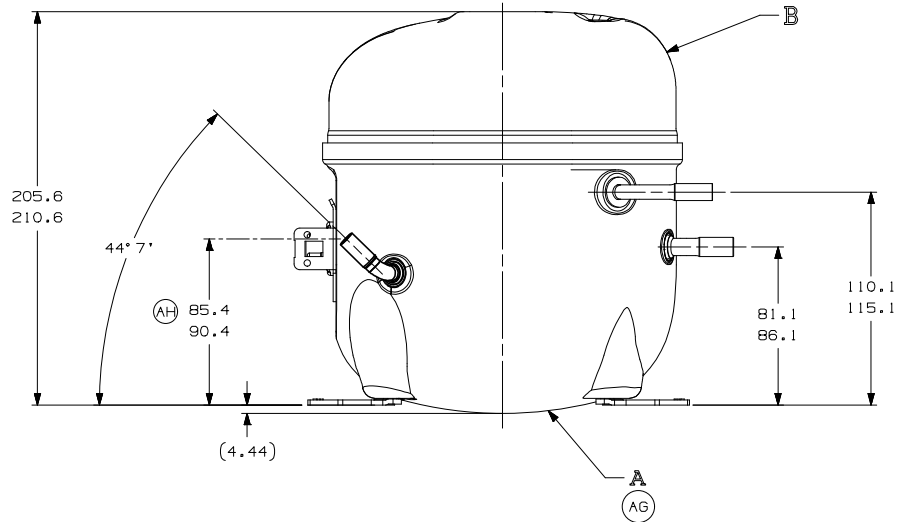
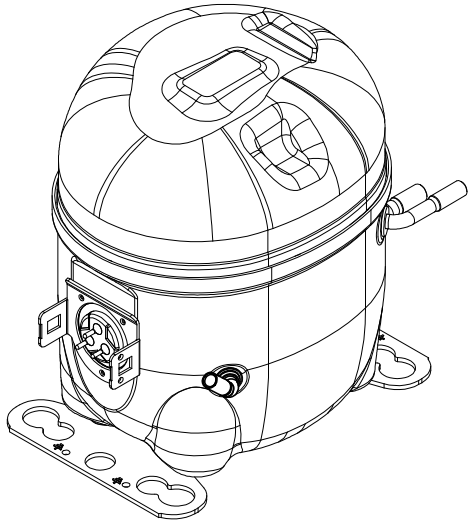
- AUXILIARY VIEW -
FASTENING DIMENSIONS



C - (COPPER) PROCESS TUBE
GAGE I.D. TO 6.45-6.55
× 15.00-17.00 DEEP.

E - (COPPER) SUCTION TUBE
GAGE I.D. TO 8.00-8.10
× 15.00-17.00 DEEP.

D - (COPPER) DISCHARGE TUBE
GAGE I.D. TO 6.45-6.55
× 15.00-17.00 DEEP.



NOTES:

- 1- IF SPECIFIED IN BM. ASSEMBLE PARTS AS SHOWN.
- 2- SEE SPEC. "A-B" & A-C FOR PROCESS.
- 3- THERE CAN BE NO CREASES IN THE TUBES. (CREASES ARE SIGNS OR MARKS THAT ARE IN SOMETHING THAT BENDS)
- 4- AFTER THE FOLDS IN THE TUBES, CANNOT BE ACCELERATED TO AREA EXCEEDING 30%.
- 5- TUBES OF SUCTION, DISCHARGE AND PROCESS MUST BE FREE OF INK ON 15.8mm (5/8") FROM TOP OF THE TUBES AS SPEC. T.P.Co. A-B4.
- 6- FOR SUPPLIER ENVIRONMENTAL REGULATORY REQUIREMENTS, SEE TECUMSEH GLOBAL SPEC. 08.

(AB)

(AF)

REV	DESCRIPTION	DATE
B5	ERA 91.60-96.60	03-08-2007
D4	ERA 66.60-91.60	03-08-2007
E5	ERA 72.10-77.10	03-08-2007
F8	ERA 14963573	03-08-2007
3A	ATUALIZAÇÃO	03-08-2007
3D	320-10240	03-08-2007
A/2	ALTERADA MEDIDA	03-08-2007
F/7	(ÁREA TENSITA DE PINTURA)	03-08-2007
F/7	ALTERADA MEDIDA	03-08-2007
F/7	ERA 80.30-80.80	03-08-2007
F/7	ALTERADA MEDIDA	03-08-2007
F/7	ERA 108.70-113.70	03-08-2007
A/2	ADICIONADO NOTA	03-08-2007
LC	LIBERACAO	03-08-2007

THIRD ANGLE PROJECTION

UNITS: mm

DRAWING SIZE: A2

PROJ. A: SYMBOLS AS PROCEDURE 2.01.031 TECUMSEH OF BRAZIL

★ = CATEGORY I
 ■ = CATEGORY II
 ▲ = CATEGORY III
 ◆ = CATEGORY IV

tecumseh

NAME: SALES COMPRESSOR

PART NO.: DCAE681

DWN. PAULO S.	CK. RAMIRO G.	APR. WALTER CORREA	SCALE 1:2	PAGE 1/1
DATE 20/06/12	REF.		FAMILY	AE2