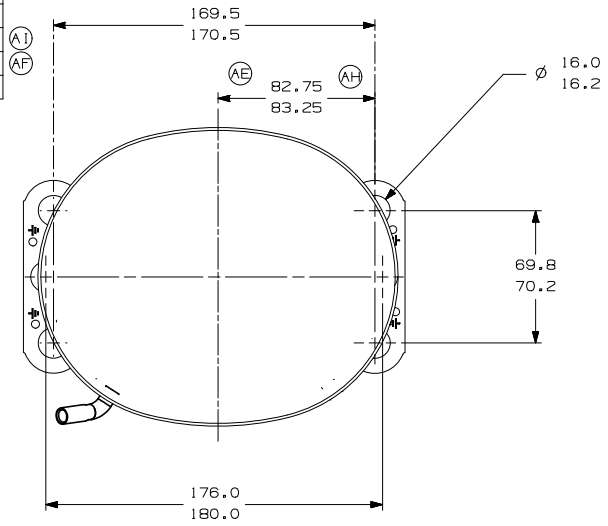
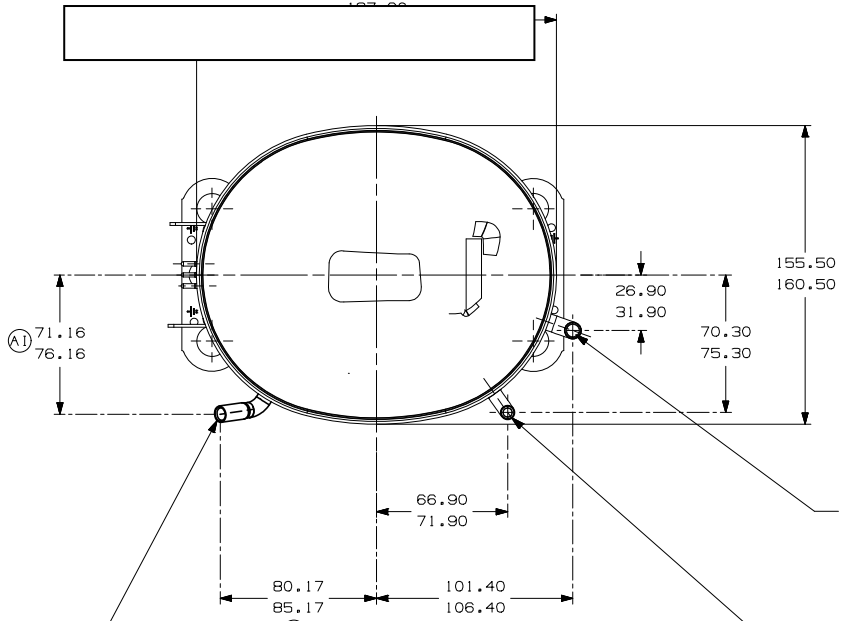


ITEM	PART NUMBER
A	320-10117
B	14963285
C	14947663
D	580-10246
E	14963570



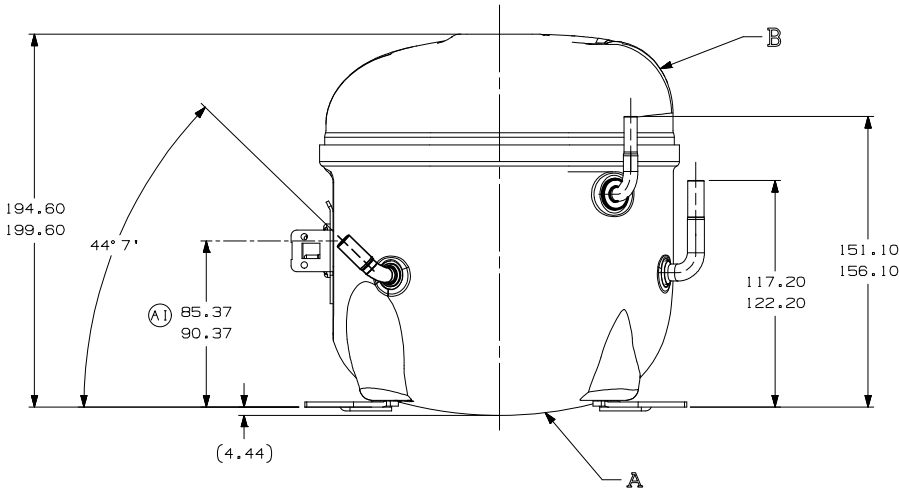
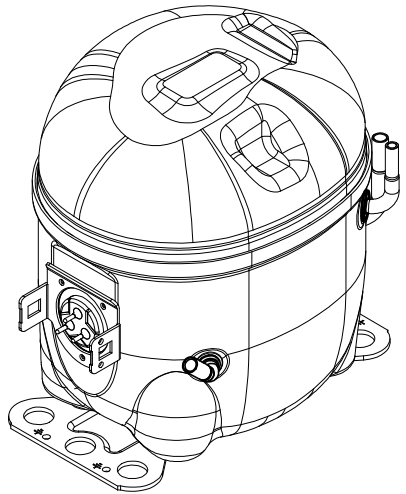
- AUXILIARY VIEW -
FASTENING DIMENSIONS



C - (COPPER) PROCESS TUBE
GAGE I.D. TO 6.45-6.55
x 15.00-17.00 DEEP.

E - (COPPER) SUCTION TUBE
GAGE I.D. TO 6.45-6.55
x 15.00-17.00 DEEP.

D - (COPPER) DISCHARGE TUBE
GAGE I.D. TO 4.92-5.02
x 15.00-17.00 DEEP.



- NOTES:
- IF SPECIFIED IN BM. ASSEMBLE PARTS AS SHOWN.
 - SEE SPEC. "A-B" & A-C FOR PROCESS. (CREASES ARE SIGNS OR MARKS THAT ARE IN SOMETHING THAT BENDS)
 - AFTER THE FOLDS IN THE TUBES, CANNOT BE ACCELERATED TO AREA EXCEEDING 30%.
 - TUBES OF SUCTION, DISCHARGE AND PROCESS MUST BE FREE OF INK ON 15.8mm (5/8") FROM TOP OF THE TUBES AS SPEC. T.P.Co. A-B4.
 - FOR SUPPLIER ENVIRONMENTAL REGULATORY REQUIREMENTS, SEE TECUMSEH GLOBAL SPEC. 08.

REV	DESCRIPTION	DATE
B5	ERA 91.60-96.60	02-02-97
D4	ERA 66.40-91.40	02-09-92
E5	ERA 72.10-77.10	08-08-95
FB	ERA 14963573	08-08-95
A/2	ALTERADA MEDIDA (AREA TENSÃO DE ACRESC. NOTA DE PINTURA)	08-08-95
F/8	ALTERADO TUBO D	08-08-95
F/7	ALTERADA MEDIDA	08-08-95
A/2	ADICIONADO NOTA	08-08-95
A/2	REVISADA NOTAS 3 E 4	08-08-95
A/2	ACRESCENTADA NOTAS 3 E 4	08-08-95
AV1	ALTERADO NOME	08-08-95
AV	LIBERACAO	08-08-95

THIRD ANGLE PROJECTION

UNITS: mm

DRAWING SIZE: A2

NO. A SYMBOLS AS PROCEDURE 2.01.031 TECUMSEH OF BRAZIL

★ = CATEGORY I
 ■ = CATEGORY II
 ▲ = CATEGORY III
 ● = CATEGORY IV

NAME		PARTY NO.	
SALES COMPRESSOR		DCAE132	
OWN.	CK.	APR.	SCALE
J. BARBANO	ANDRE MARTINEZ	WALTER CORREA	1:2
DATE	REF.	FAMILY	PAGE
09/06/11			1/1

AE2