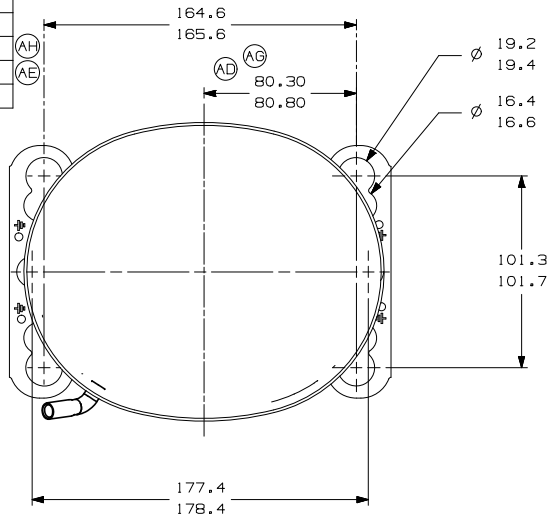
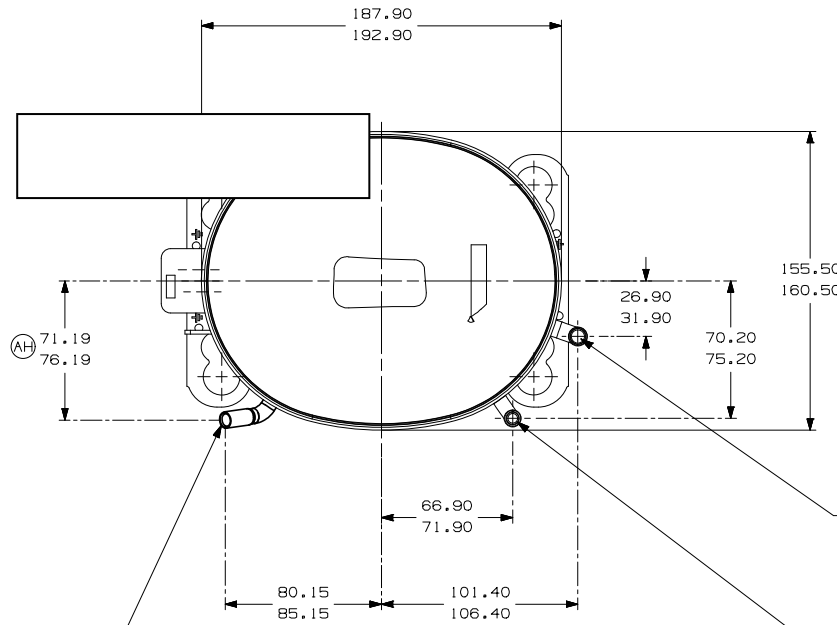


ITEM	PART NUMBER
A	320-10155
B	14963286
C	14947663
D	580-10244
E	14963571



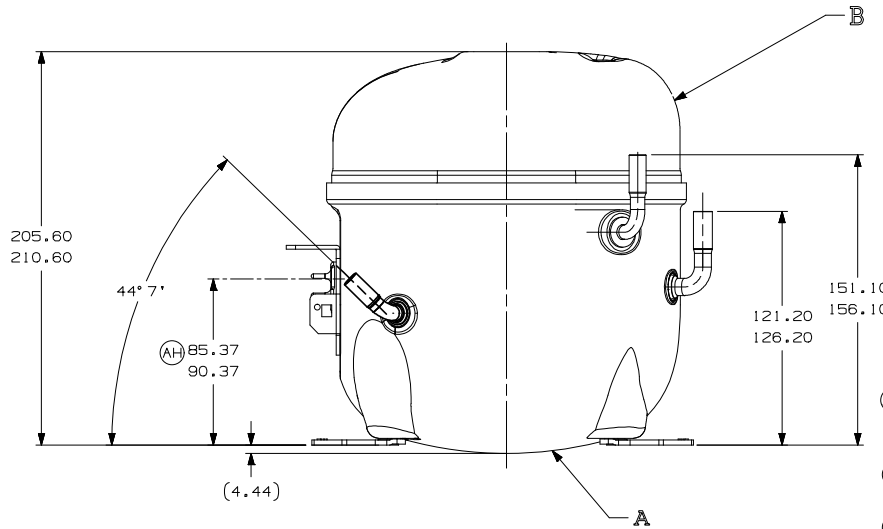
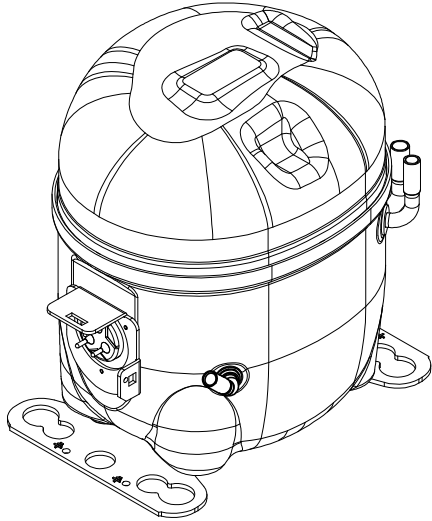
- AUXILIARY VIEW -
FASTENING DIMENSIONS



C - (COPPER) PROCESS TUBE
GAGE I.D. TO 6.45-6.55
× 15.00-17.00 DEEP.

E - (COPPER) SUCTION TUBE
GAGE I.D. TO 8.00-8.10
× 18.00-19.00 DEEP.

D - (COPPER) DISCHARGE TUBE
GAGE I.D. TO 6.45-6.55
× 13.00-15.00 DEEP.



NOTES:

- 1- IF SPECIFIED IN BM. ASSEMBLE PARTS AS SHOWN.
- 2- SEE SPEC. "A-B" & A-C FOR PROCESS.
- 3- THERE CAN BE NO CREASES IN THE TUBES. (CREASES ARE SIGNS OR MARKS THAT ARE IN SOMETHING THAT BENDS)
- 4- AFTER THE FOLDS IN THE TUBES, CANNOT BE ACCELERATED TO AREA EXCEEDING 30%.
- 5- TUBES OF SUCTION, DISCHARGE AND PROCESS MUST BE FREE OF INK ON 15.8mm (5/8") FROM TOP OF THE TUBES AS SPEC. T.P.Co. A-B4.
- 6- FOR SUPPLIER ENVIRONMENTAL REGULATORY REQUIREMENTS, SEE TECUMSEH GLOBAL SPEC. 08.

THIRD ANGLE PROJECTION
UNITS: mm
DRAWING SIZE: A2

□ = CATEGORY I
■ = CATEGORY II
■ = CATEGORY III
■ = CATEGORY IV



NAME			PARTY NO.	
SALES COMPRESSOR			DCAE209	
DWN.	CK.	APR.	SCALE	PAGE
J. BARBANO	ANDRE MARTINEZ	WALTER CORREA	1:2	1/1
DATE	REF.	FAMILY	AE2	
09/06/11				

REV.	DESCRIPTION	DATE
B5	ERA 91.60-96.60	EC03667
D4	ERA 86.60-91.60	EC102287
E5	ERA 72.10-77.10	EC102287
FB	ERA 14963573	EC102287
A/2	ALTERADA MEDIDA ERA: B2.30-B2.80	EC80775
F/7	E ACRESC. NOTA 6	EC70388
..	RETIRADO DETALHE (AREA TUBENTA DE PINTURA)	EC03667
F/8	ALTERADO TUBO D	EC46188
F/7	ALTERADA MEDIDA ERA: A60.30-80.80	EC52640
A/2	ADICIONADO NOTA	EC44026
A/2	REVISADA NOTAS 3 E 4	EC41412
A/2	ACRESCENTADA NOTAS 3 E 4	EC41412
AA	LIBERACAO	EC41412
LT	LC	CHANGE