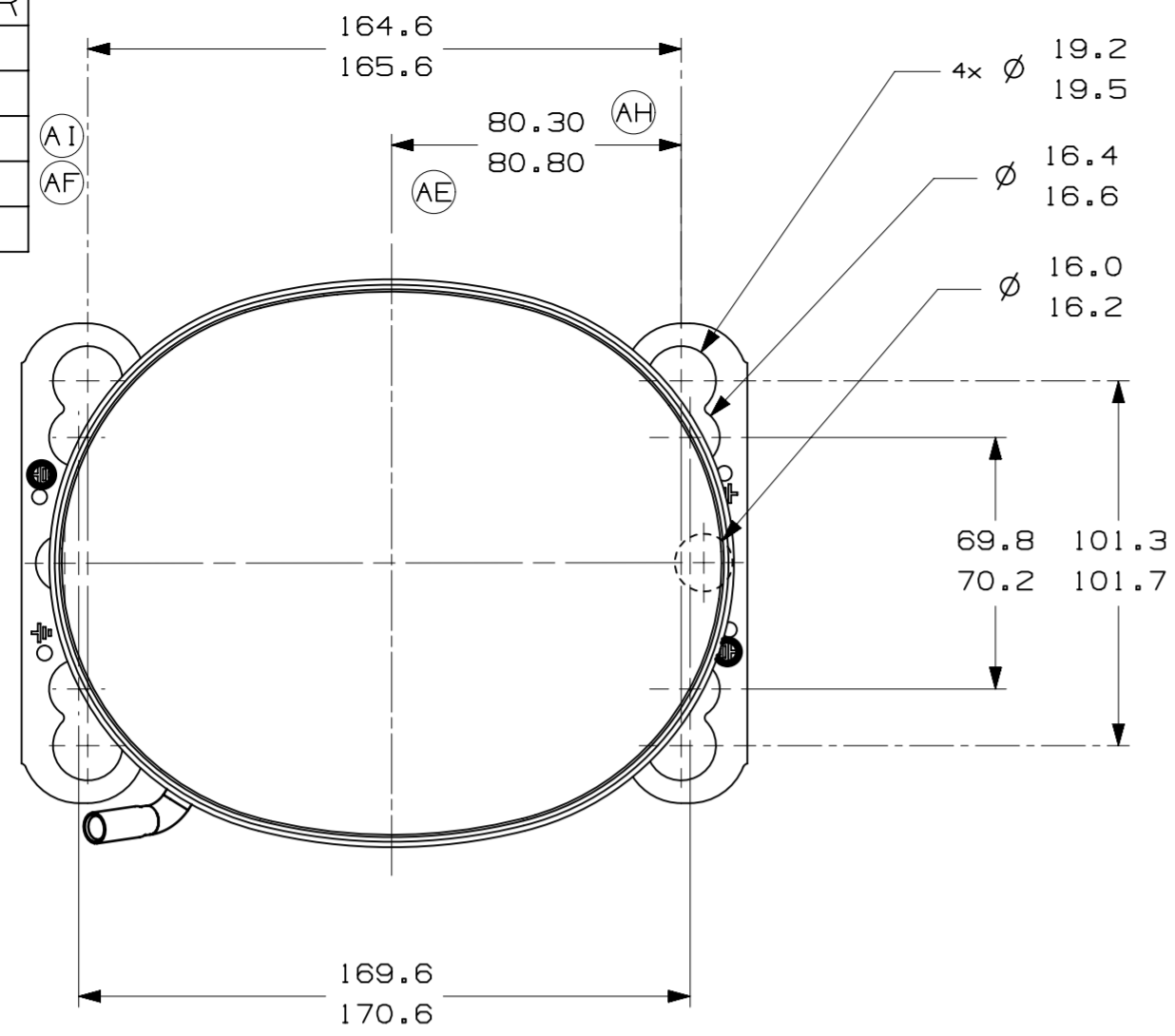
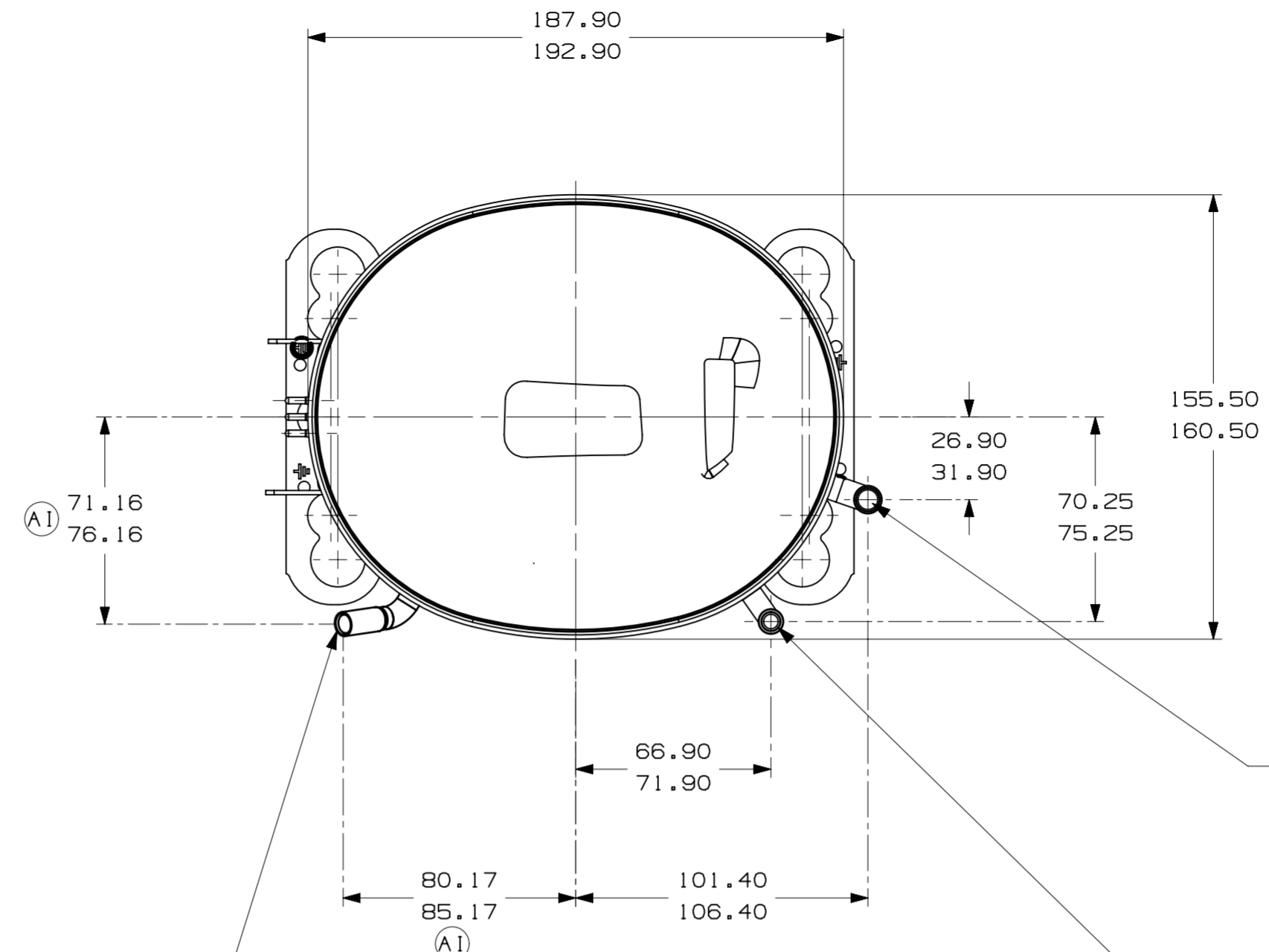


ITEM	PART NUMBER
A	320-10116
B	14963285
C	14947663
D	14963519
E	14963571



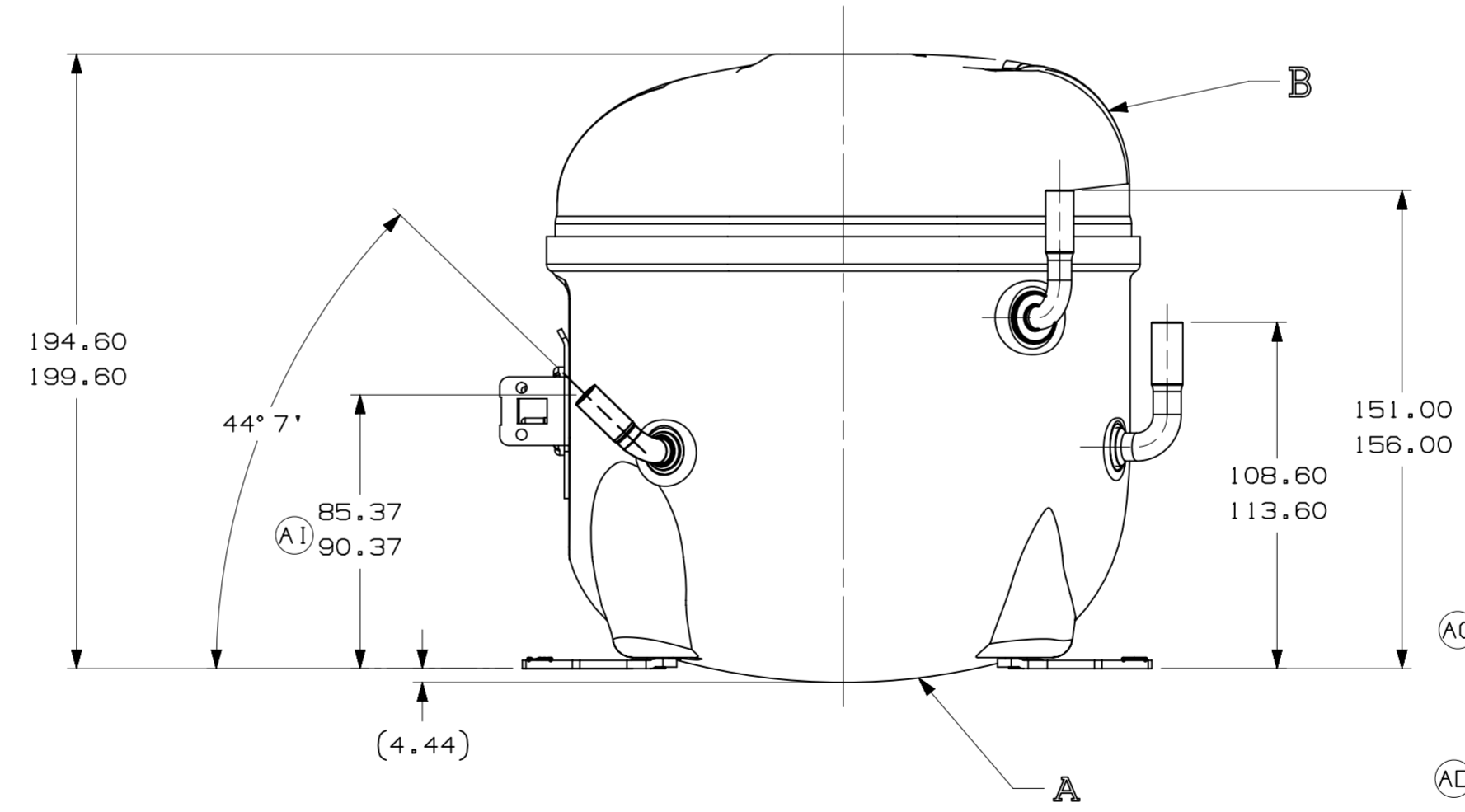
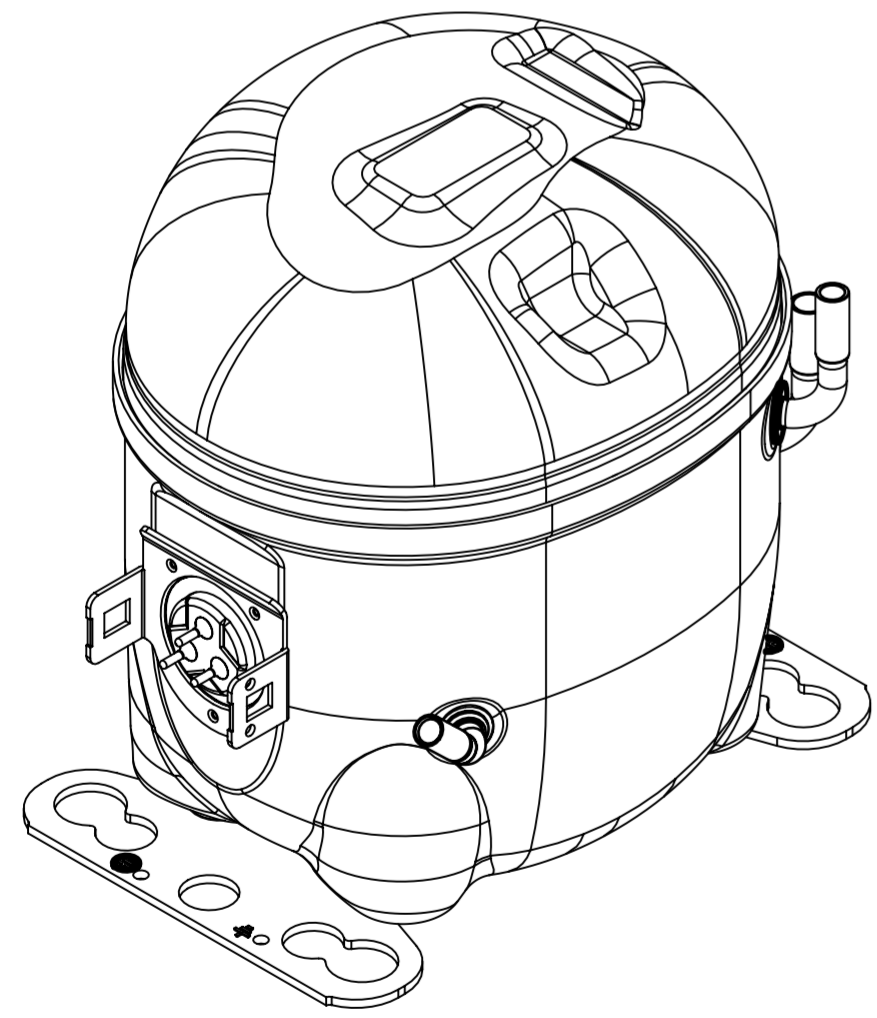
- AUXILIARY VIEW -  
FASTENING DIMENSIONS



E - (COPPER) SUCTION TUBE  
GAGE I.D. TO 8.00-8.10  
× 15.00-17.00 DEEP.

D - (COPPER) DISCHARGE TUBE  
GAGE I.D. TO 6.45-6.55  
× 15.00-17.00 DEEP.

C - (COPPER) PROCESS TUBE  
GAGE I.D. TO 6.45-6.55  
× 15.00-17.00 DEEP.



- NOTES:
- 1- IF SPECIFIED IN BM. ASSEMBLE PARTS AS SHOWN.
  - 2- SEE SPEC. "A-B" & A-C FOR PROCESS.
  - 3- THERE CAN BE NO CREASES IN THE TUBES. (CREASES ARE SIGNS OR MARKS THAT ARE IN SOMETHING THAT BENDS)
  - 4- AFTER THE FOLDS IN THE TUBES, CANNOT BE ACCELERATED TO AREA EXCEEDING 30%.
  - 5- TUBES OF SUCTION, DISCHARGE AND PROCESS MUST BE FREE OF INK ON 15.8mm (5/8") FROM TOP OF THE TUBES AS SPEC. T.P.Co. A-B4.
  - 6- FOR SUPPLIER ENVIRONMENTAL REGULATORY REQUIREMENTS, SEE TECUMSEH GLOBAL SPEC. 08.

LT	LC	CHANGE	DATE	DESCRIPTION
B5		ERA 91.60-96.60	EC102387 02-05-22 SM. R6.	
D4		ERA 86.60-91.60	EC80775 14-02-18 PS. R6.	
E5		ERA 72.10-77.10	EC70368 06-06-18 AMP. WC.	
F8		ERA 14963573	EC59687 03-03-15 PS. R6.	
A/2		ALTERADA MEDIDA ERA: 82.30-82.80	EC48188 31-01-14 PS. R6.	
F/6		E ACRESC. NOTA 6	EC52840 AMP. WF. 13-01-13	
AG		RETIRADO DETALHE (AREA ISENTA DE PINTURA)	EC44036 08/06/12 PS. A.M	
F/7		ALTERADO TUBO D ERA: 14963519	EC41721 07/11/11 J.B / W.C	
F/7		ALTERADA MEDIDA ERA: 80.30-80.80	EC38630 22/08/11 J.B / A.M	
A/2		ADICIONADO NOTA		
A/2		REVISADA NOTAS 3 E 4		
A/2		ACRESCENTADA NOTAS 3 E 4		
A/1		ALTERADO NOME ERA: BRDOND		
AA		LIBERACAO		

THIRD ANGLE PROJECTION			<h1>Tecumseh</h1>
UNITS: mm	DRAWING SIZE: A2		
0. A SYMBOLS AS PROCEDURE 2.01.031 TECUMSEH OF BRAZIL		NAME	PART NO.
* = CATEGORY I ▲ = CATEGORY II ■ = CATEGORY III □ = CATEGORY IV	SCALE	SALES COMPRESSOR	DCAE196
DATE	REF.	SCALE	PAGE
09/06/11		1:2	1/1
FAMILY		AE2	