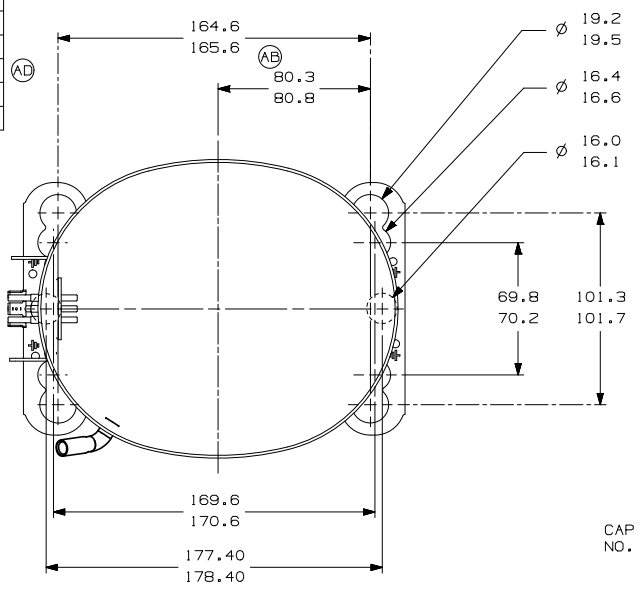
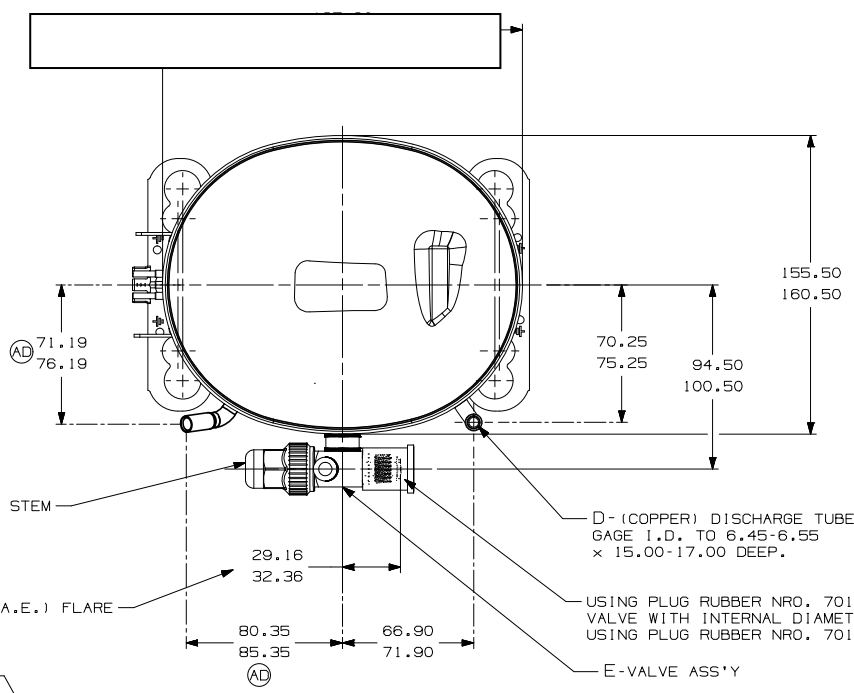


ITEM	PART NUMBER
A	320-10607
B	14963286
C	14947663
D	580-10243
E	BRA156512

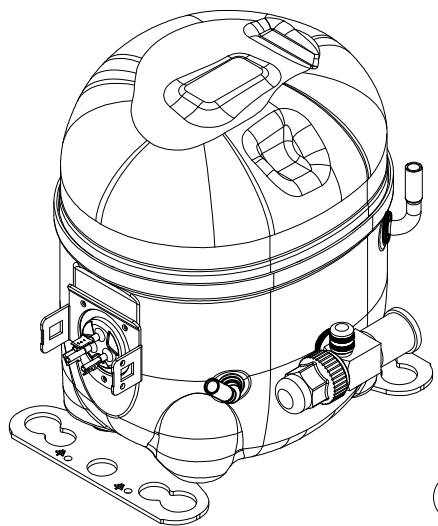


-AUXILIARY VIEW-  
FASTENING DIMENSIONS



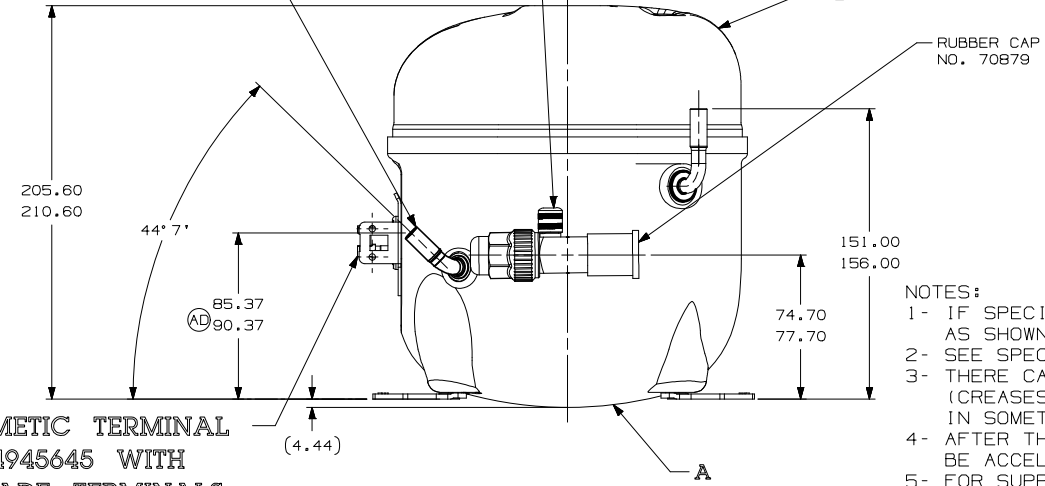
C - (COPPER) PROCESS TUBE  
GAGE I.D. TO 6.45-6.55  
x 15.00-17.00 DEEP.  
THIS TUBE MUST BE SEALED  
AND WELDED WITH PHOSCOPPER  
IN THE FINAL AFTER THE  
DEHYDRATION PROCESS.

SEALING COVER ASS'Y  
NO. 14954368



AC

**HERMETIC TERMINAL  
14945645 WITH  
SPADE TERMINALS**



- NOTES:
- 1 - IF SPECIFIED IN BM. ASSEMBLE PARTS AS SHOWN.
  - 2 - SEE SPEC. "A-B" & A-C FOR PROCESS.
  - 3 - THERE CAN BE NO CREASES IN THE TUBES. (CREASES ARE SIGNS OR MARKS THAT ARE IN SOMETHING THAT BENDS)
  - 4 - AFTER THE FOLDS IN THE TUBES, CANNOT BE ACCELERATED TO AREA EXCEEDING 30%.
  - 5 - FOR SUPPLIER ENVIRONMENTAL REGULATORY REQUIREMENTS, SEE TECUMSEH GLOBAL SPEC.08.

REV.	DESCRIPTION	DATE
01	EC102987	14-02-19
02	13-09-26	15-12-18
03	8M, 7162	09-09-20
04	EC080778	14-02-19
05	15-12-18	09-09-20
06	EC75220	15-12-18
07	15-12-18	09-09-20

ITEM	DESCRIPTION	DATE
B5	ERA 91.60-96.60	
D4	ERA 86.60-91.60	
E5	ERA 72.10-77.10	
F8	ERA 14963573	
A/C	M/6	
AB	F/7	
AA		

REV.	DESCRIPTION	DATE
01	EC102987	14-02-19
02	13-09-26	15-12-18
03	8M, 7162	09-09-20
04	EC080778	14-02-19
05	15-12-18	09-09-20
06	EC75220	15-12-18
07	15-12-18	09-09-20

REV.	DESCRIPTION	DATE
B5	ERA 91.60-96.60	
D4	ERA 86.60-91.60	
E5	ERA 72.10-77.10	
F8	ERA 14963573	
A/C	M/6	
AB	F/7	
AA		

		<b>tecumseh</b>	
THIRD ANGLE PROJECTION 		UNITS: mm DRAWING SIZE: A2	
ID. A SYMBOLS AS PROCEDURE 2.01.031 TECUMSEH OF BRAZIL		NAME: SALES COMPRESSOR PART NO.: DCAE224	
DWN. PAULO DATE: 09-11-16	CK. RAMIRO REF.	APR. W. CORREA	SCALE: 1:2 PAGE: 1/1 FAMILY: AE2