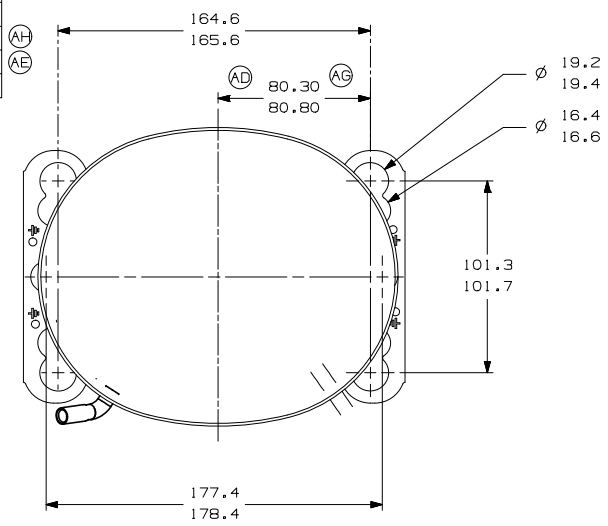
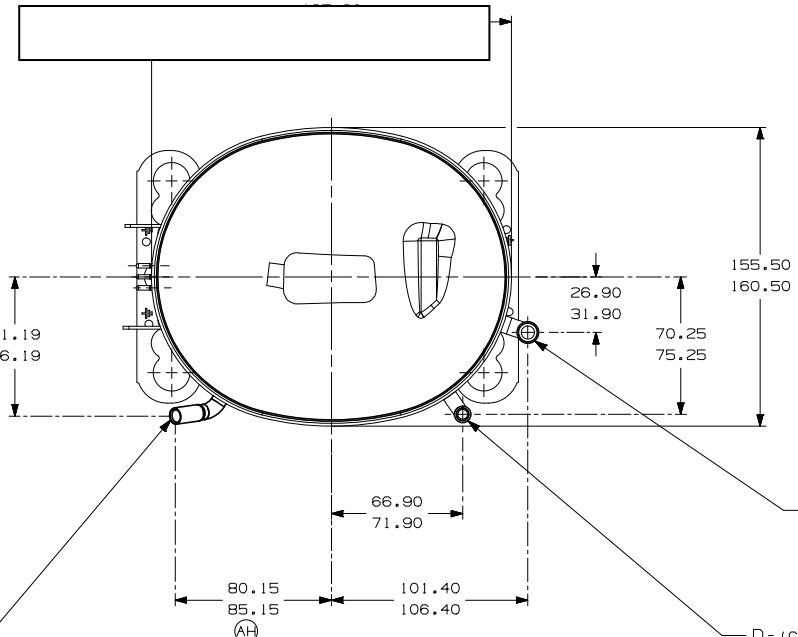


ITEM	PART NUMBER
A	320-10158
B	14963286
C	14947663
D	580-10243
E	14963572



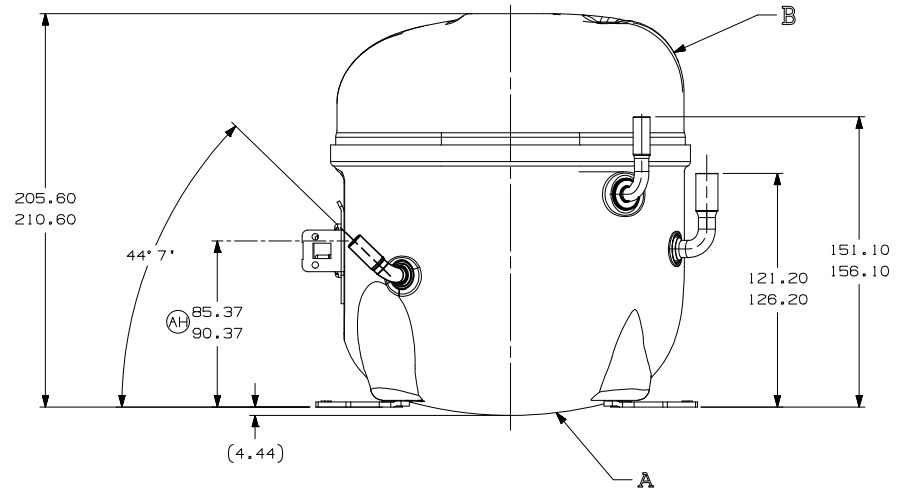
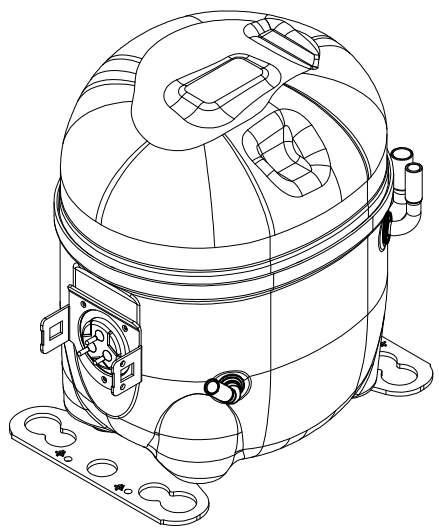
- AUXILIARY VIEW -
FASTENING DIMENSIONS



E- (COPPER) SUCTION TUBE
GAGE I.D. TO 9.60-9.70
× 15.00-17.00 DEEP.

D- (COPPER) DISCHARGE TUBE
GAGE I.D. TO 6.45-6.55
× 15.00-17.00 DEEP.

C- (COPPER) PROCESS TUBE
GAGE I.D. TO 6.45-6.55
× 15.00-17.00 DEEP.



- NOTES:
- 1- IF SPECIFIED IN BM. ASSEMBLE PARTS AS SHOWN.
 - 2- SEE SPEC. "A-B" & A-C FOR PROCESS.
 - 3- THERE CAN BE NO CREASES IN THE TUBES. (CREASES ARE SIGNS OR MARKS THAT ARE IN SOMETHING THAT BENDS)
 - 4- AFTER THE FOLDS IN THE TUBES, CANNOT BE ACCELERATED TO AREA EXCEEDING 30%.
 - 5- TUBES OF SUCTION, DISCHARGE AND PROCESS MUST BE FREE OF INK ON 15.8mm (5/8") FROM TOP OF THE TUBES AS SPEC. T.P.Co. A-B4.
 - 6- FOR SUPPLIER ENVIRONMENTAL REGULATORY REQUIREMENTS, SEE TECUMSEH GLOBAL SPEC. 08.

ITEM	DESCRIPTION	DATE	BY	CHK.	APPR.
B5	ERA 91.60-96.60				
D4	ERA 66.40-91.40				
E5	ERA 72.10-77.10				
F8	ERA 14963573				
AG	N/2 ALTERADA MEDIDA ERA: 82.30-82.80 F/6 E ACHESC. NOTA 5				
AF	RETIRADO DETALHE 08-08-18 DE FANTOURA				
AE	F/8 ALTERADO TUBO D ERA: 14963518				
AD	F/7 ALTERADA MEDIDA ERA: 80.3-80.8				
AG	N/2 ADICIONADO NOTA				
AB	N/2 REVISADA NOTAS 3 E 4				
AA	N/2 ACRESCENTADA NOTAS 3 E 4				
AA	LIBERACAO				
LT	LC	CHANGE			

THIRD ANGLE PROJECTION

UNITS: mm

DRAWING SIZE: A2

NO. A SYMBOLS AS PROCEDURE 2.01.031 TECUMSEH OF BRAZIL

SALES COMPRESSOR

PART NO. DCAE116

OWN. J. BARBANO	CK. ANDRE MARTINEZ	APPR. WALTER CORREA	SCALE 1:2	PAGE 1/1
DATE 30/09/11	REF.		FAMILY AE2	