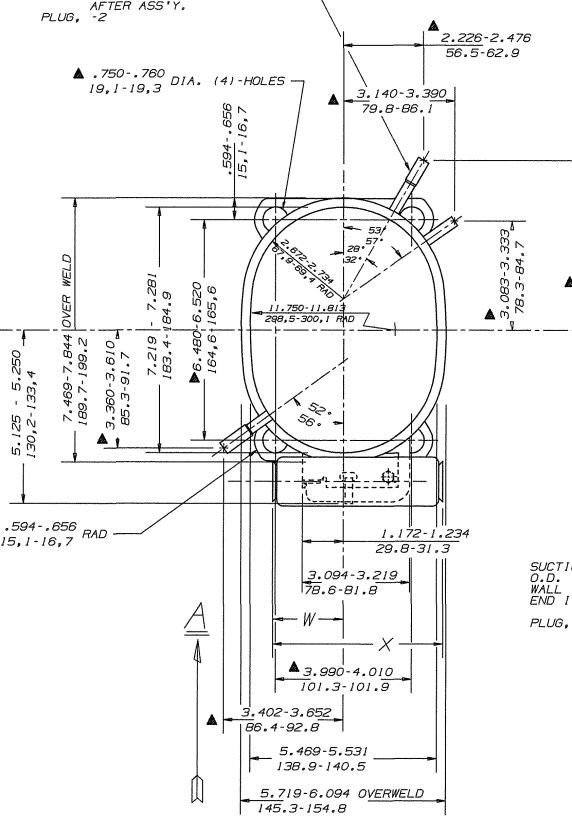


	DIM. W	DIM. X	DIM. Y
WITH 3.875 (98.4) LONG CAPACITOR	1.453-1.703 36.9-43.3	4.079-4.141 103.6-105.2	
WITH 1.438 (36.5) DIA. CAPACITOR			1.889-2.021 50.0-51.6
WITH 4.875 (123.8) LONG CAPACITOR	1.853-2.203 46.8-56.0	5.079-5.141 129.0-130.6	5.344-2.208 56.5-91.7
WITH 1.813 (46.1) DIA. CAPACITOR			

▲ DISCHARGE - COPPER
O.D. - .3105-.3145 (7.9-8.0)
WALL - .046-.052 (1.2-1.3)
END I.D. - .253-.258 (6.4-6.5)
× .719-.781 (18.3-19.8)
SWAGE TO ABOVE I.D.
AFTER ASS'Y.
PLUG, -2



SUCTION - COPPER
O.D. - .3105-.3145 (7.9-8.0)
WALL - .032-.038 (0.8-1.0)
END I.D. - .315-.319 (8.0-8.1)
× .875-.838 (22.2-23.8)
PLUG, -3

PROCESS - COPPER
O.D. - .3105-.3145 (7.9-8.0)
I.D. - .254-.258 (6.5-6.6)
PLUG, -2

VIEW IN DIRECTION A

NOTE:

- 1. IF SPECIFIED ON BILL OF MATERIAL ASSEMBLE THESE PARTS AS SHOWN.
- 2. SEE SPEC. "A-B" & "A-C" FOR PROCESSING.

DIMENSIONS: INCHES OR INCHES (MILLIMETERS)

G.A. SYMBOLS

- ★ = CATEGORY I
- ▲ = CATEGORY II
- = CATEGORY III
- = CATEGORY IV

A	B	C	D	E
32085-1	HA531-18	34461-1	58073-5	34134

REV	DATE	BY	CHK	APP	SCALE	TITLE
1	07/18/91	WAS	REL	WAS	1"=2"	SALES COMPRESSOR
2	07/18/91	WAS	REL	WAS		
3	07/18/91	WAS	REL	WAS		
4	07/18/91	WAS	REL	WAS		
5	07/18/91	WAS	REL	WAS		
6	07/18/91	WAS	REL	WAS		
7	07/18/91	WAS	REL	WAS		
8	07/18/91	WAS	REL	WAS		
9	07/18/91	WAS	REL	WAS		
10	07/18/91	WAS	REL	WAS		

DIV. CODE 540
NAME SALES COMPRESSOR
MATERIAL NOTED
INTERNAL USE ONLY
@2000 TECUMBEH PRODUCTS CO. - DCAE916.RL.PRT
PART NO. DCAE916

