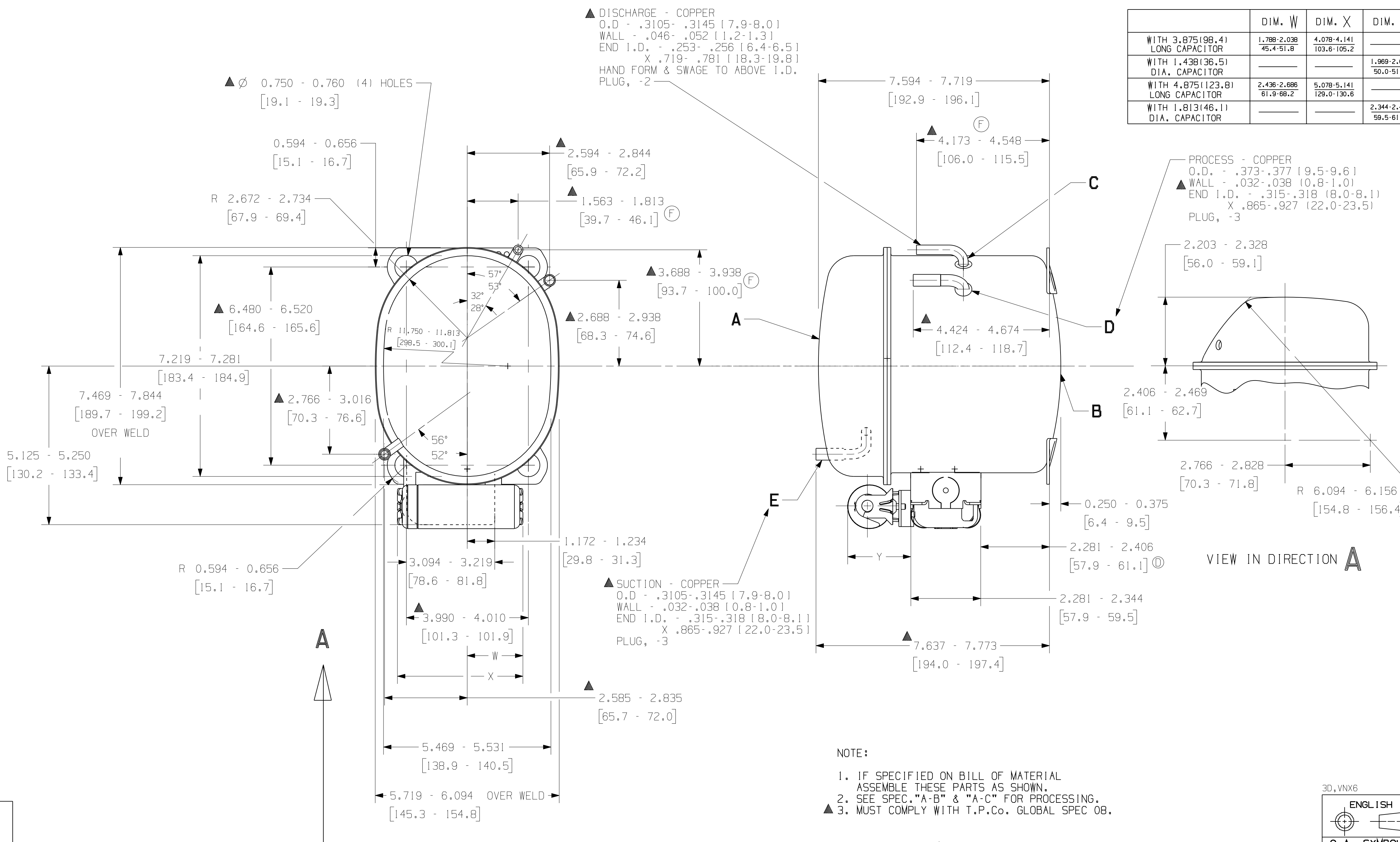


	DIM. W	DIM. X	DIM. Y
WITH 3.875(98.4) LONG CAPACITOR	1.788-2.038 45.4-51.8	4.078-4.141 103.6-105.2	
WITH 1.438(36.5) DIA. CAPACITOR			1.969-2.031 50.0-51.6
WITH 4.875(123.8) LONG CAPACITOR	2.436-2.686 61.9-68.2	5.078-5.141 129.0-130.6	
WITH 1.813(46.1) DIA. CAPACITOR			2.344-2.406 59.5-61.1



- NOTE:
- IF SPECIFIED ON BILL OF MATERIAL ASSEMBLE THESE PARTS AS SHOWN.
 - SEE SPEC. "A-B" & "A-C" FOR PROCESSING.
 - MUST COMPLY WITH T.P.Co. GLOBAL SPEC 08.

DIMENSIONS - INCHES OR MILLIMETERS

3D, VNX6

ENGLISH

O.A. SYMBOLS

- ★ = CATEGORY I
- ▲ = CATEGORY II
- = CATEGORY III
- = CATEGORY IV

AE

LT	LC	CHANGE	DATE
A	A6	WAS 34467	9/2/92
B	A6	WAS 34461	9/2/92
C	6A	WAS 34787	1/20/93
D	2C	WAS 34787	5/12/93
E	A6	WAS 34529	29MARR07
F		EC27714 NO CHANGE WAS BR34529-2 ADDED GLOBAL SPEC 08	TS 28JAN11

DIMS CODE		NAME	
-		SALES COMPRESSOR	
SCALE		THIS PRINT SUPERSEDES ALL PRINTS PRIOR TO	
1"=2"		DRAWING NO.	
MATERIAL		DCAE924	
NOTED		TECUMSEH PRODUCTS CO. ANN ARBOR, MICHIGAN	