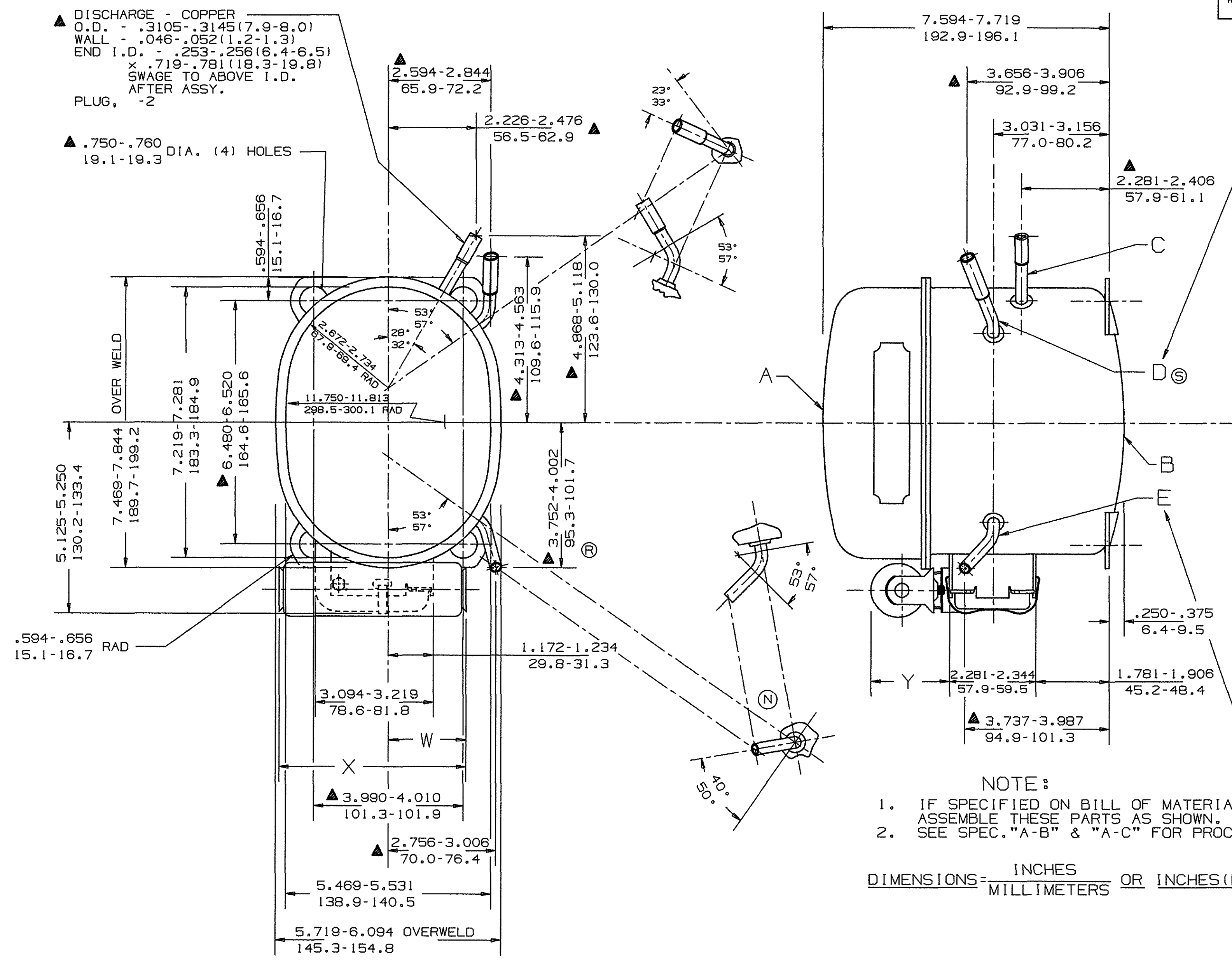


	DIM.W	DIM.X	DIM.Y
WITH 3.875(98.4) LONG CAPACITOR	1.453-1.703 36.9-43.3	4.078-4.141 103.6-105.2	
WITH 1.438(36.5) DIA. CAPACITOR			1.969-2.031 50.0-51.6
WITH 4.875(123.8) LONG CAPACITOR	1.953-2.203 49.6-56.0	5.078-5.141 129.0-130.6	
WITH 1.813(46.1) DIA. CAPACITOR			2.344-2.406 59.5-61.1



NOTE:  
 1. IF SPECIFIED ON BILL OF MATERIAL ASSEMBLE THESE PARTS AS SHOWN.  
 2. SEE SPEC. "A-B" & "A-C" FOR PROCESSING.

DIMENSIONS = INCHES OR INCHES (MILLIMETERS)  
 MILLIMETERS

Q.A. SYMBOLS

- ★ = CATEGORY I
- ▲ = CATEGORY II
- = CATEGORY III
- = CATEGORY IV

A	32095																			
B	HA-531-24																			
C	34461																			
D	34360																			
E	34690																			
S	LEADER LINE	3/7/91																		
R	3.75 1/4	11/25/90																		
P	Q.A. SYMBOLS	1/25/90																		
N	PROC. TUBE	11-7-88																		
M	NO CHANGE	3-10-88																		
LT	DATE																			

DIS. CODE 34D

NAME SALES COMPRESSOR

SCALE 1"=2"

THIS PRINT SUPERSEDES ALL PRINTS PRIOR TO

TECUMSEH PRODUCTS CO.  
 TECUMSEH, MICHIGAN

MATERIAL NOTED

INTERNAL USE ONLY  
 ©GUILDISK1:BRDERRICK:AE-DCAE725.REV6.PRT

PART NO. DCAE725