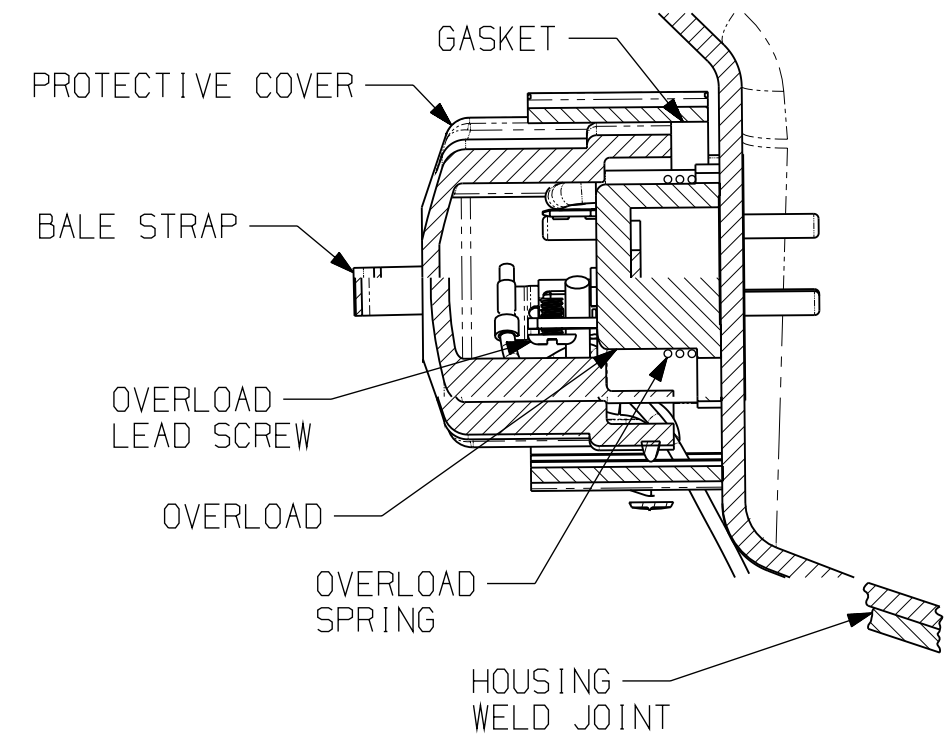
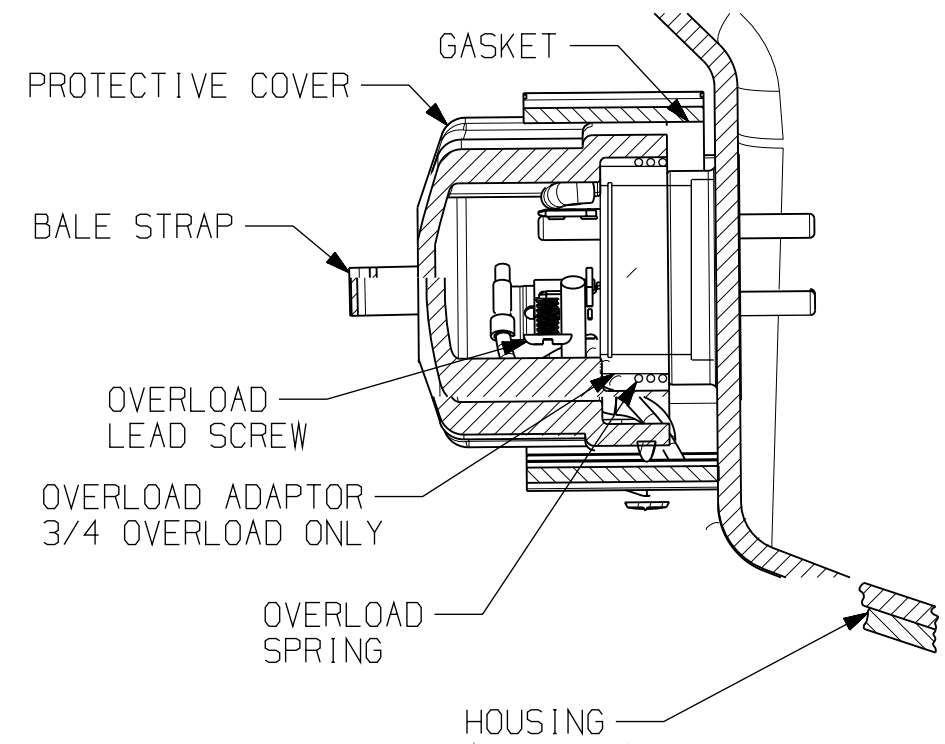


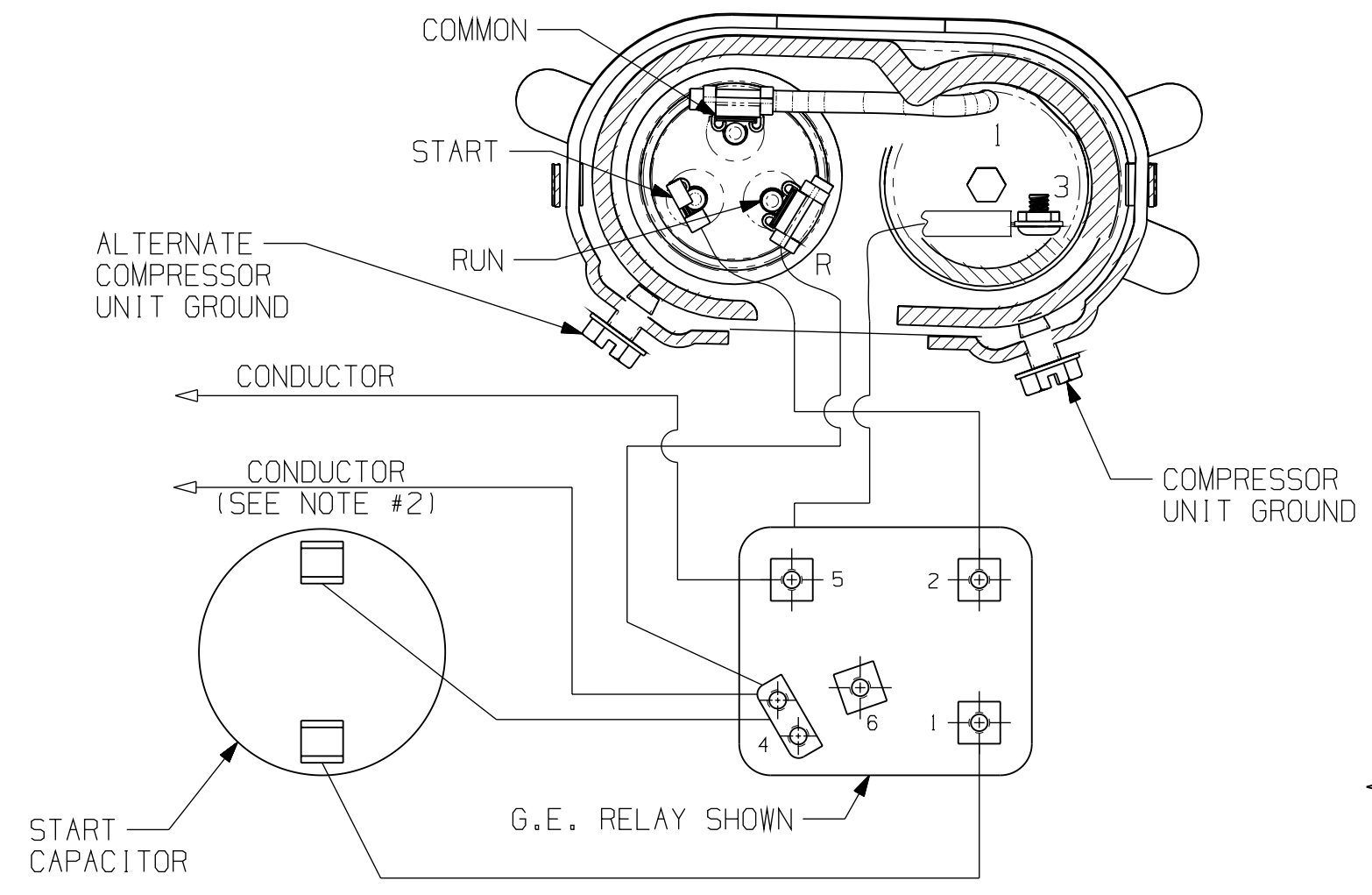
ALTERNATE B-B



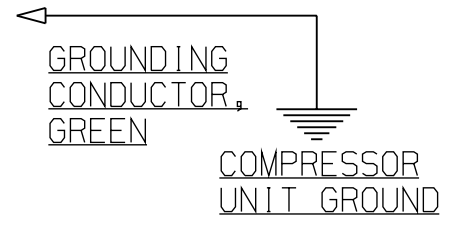
SECTION C-C



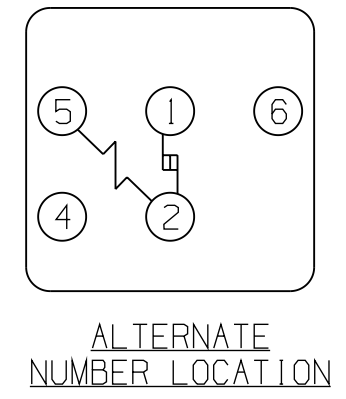
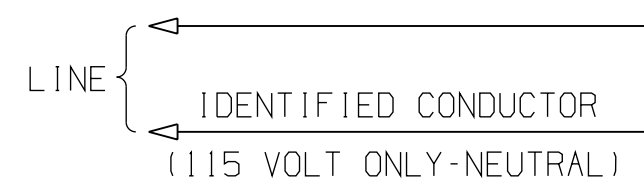
ALTERNATE C-C



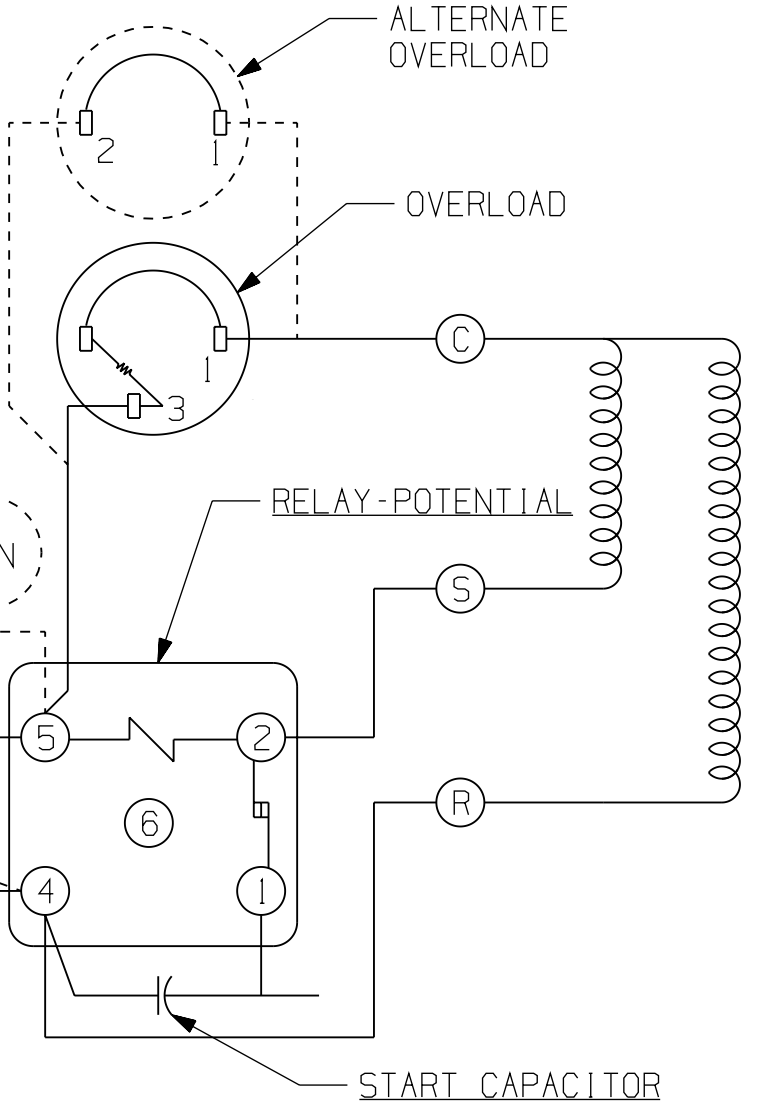
SECTION B-B



GROUNDING CONDUCTOR GREEN
COMPRESSOR UNIT GROUND



ALTERNATE NUMBER LOCATION

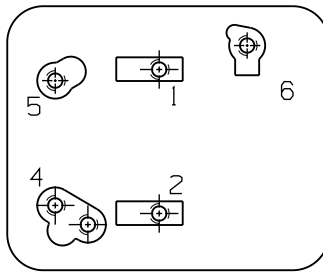


115 OR 230 V.-SCHEMATIC WIRING DIAGRAM - CSIR - POTENTIAL RELAY (REF. DWG. MD472-10)

WARNING - WIRING DIAGRAM MUST BE FOLLOWED AS SHOWN. ANY MISWIRING CAN CAUSE SERIOUS ELECTRICAL HAZARD AND POTENTIAL DAMAGE OR RUPTURE OF COMPONENT ELECTRICAL PARTS.

NOTES:

1. ASSEMBLE THESE PARTS AS SHOWN IF SPECIFIED ON B/M.
2. IDENTIFIED CONDUCTOR MAYBE WHITE OR RIBBED (115 VOLT ONLY-NEUTRAL).
3. COMPRESSOR UNIT GROUND SCREW IS NOT PROVIDED BY T.C.CO.
- ▲ 4. MUST COMPLY WITH T.P.Co. GLOBAL SPEC 08.



R.B.M.

ALTERNATE RELAY - HOOKUP DOES NOT CHANGE WHEN THESE RELAYS ARE USED.

ENGLISH	
Q.A. SYMBOLS	
☆	= CATEGORY I
△	= CATEGORY II
□	= CATEGORY III
○	= CATEGORY IV

Ⓟ AJ - 115 OR 230 VOLT - CSIR - POTENTIAL RELAY

Banner User: ken.krzywdzinski Part/Rev: aj-deaj2_v-c.prt Date: 26-Jan-10 Time: 15:48

ELECTRICAL HOOKUP		SCALE: 1:1 & NOTED		THIS PRINT SUPERSEDES ALL PRINTS PRIOR TO	
TECUMSEH PRODUCTS CO. TECUMSEH, MICHIGAN		DRAWING NO. DEAJ2		REVISION LEVEL: REL	
MATERIAL: NOTED		DRAWING No. MDBBB-08		REVISION LEVEL: REL	
DATE: 26 JAN 10		KMK		#244142-000	
REVISED NOTE: 3A 3C ADDED GLOBAL SPEC 08.		7F 3F		REDRAWN, & REVISED ORIENTATION OF LEAD WIRE.	
DATE: 26 JAN 10		KMK		#244142-000	
REVISED NOTE: 3A 3C ADDED GLOBAL SPEC 08.		7F 3F		REDRAWN, & REVISED ORIENTATION OF LEAD WIRE.	