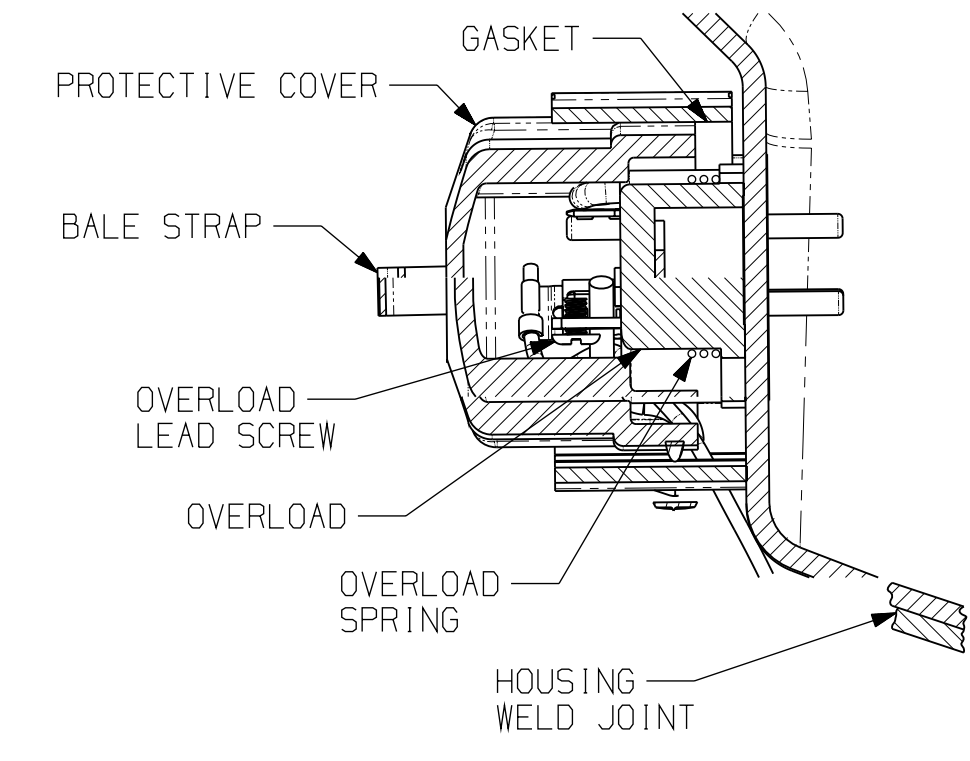
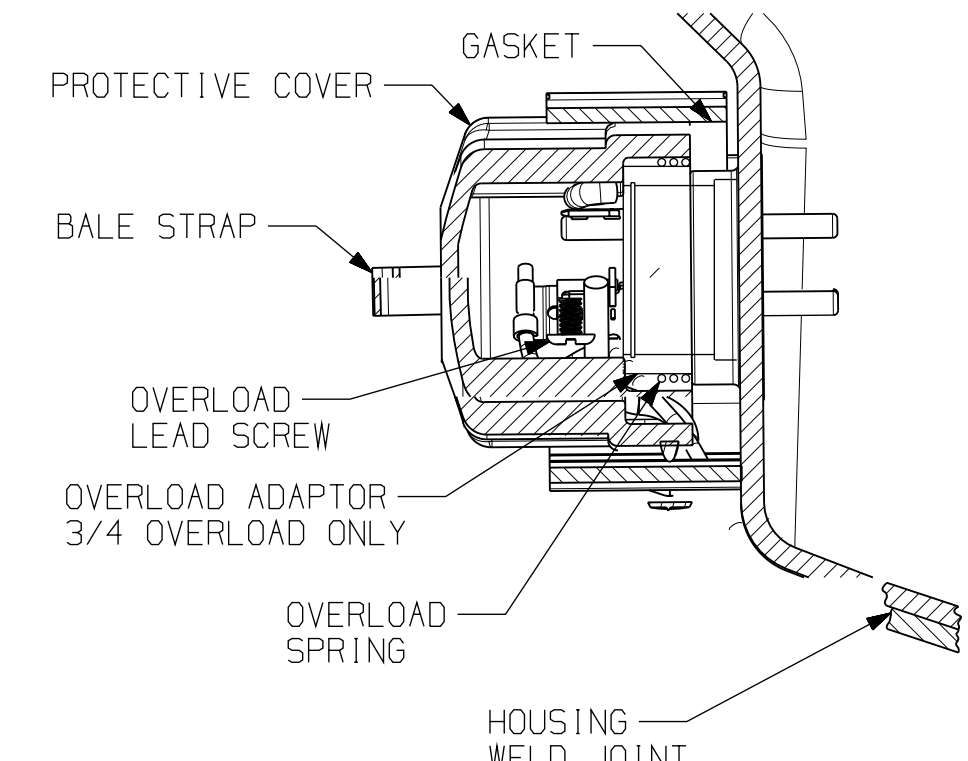


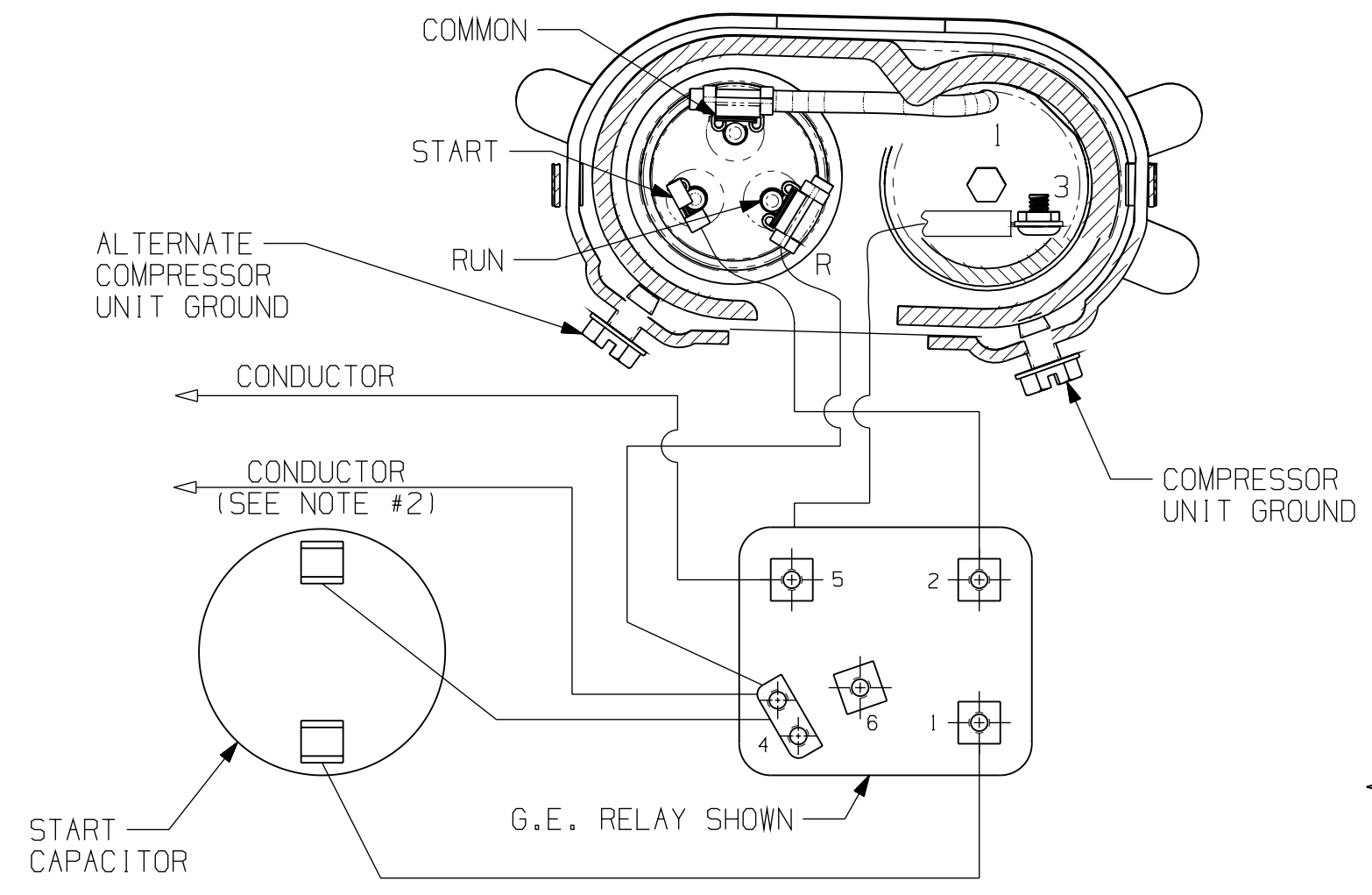
ALTERNATE B-B



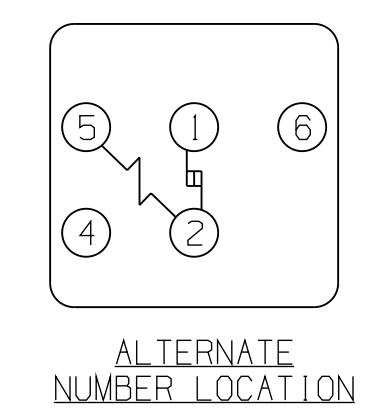
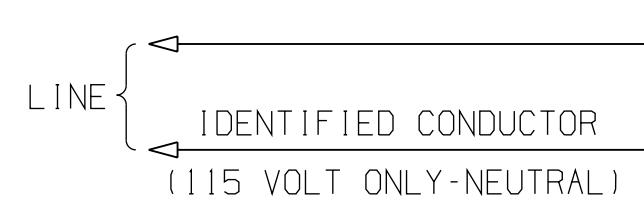
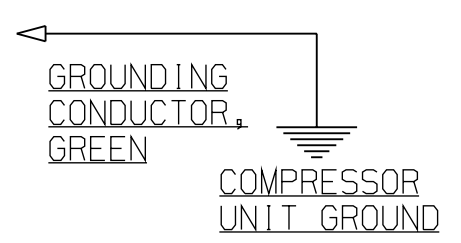
SECTION C-C



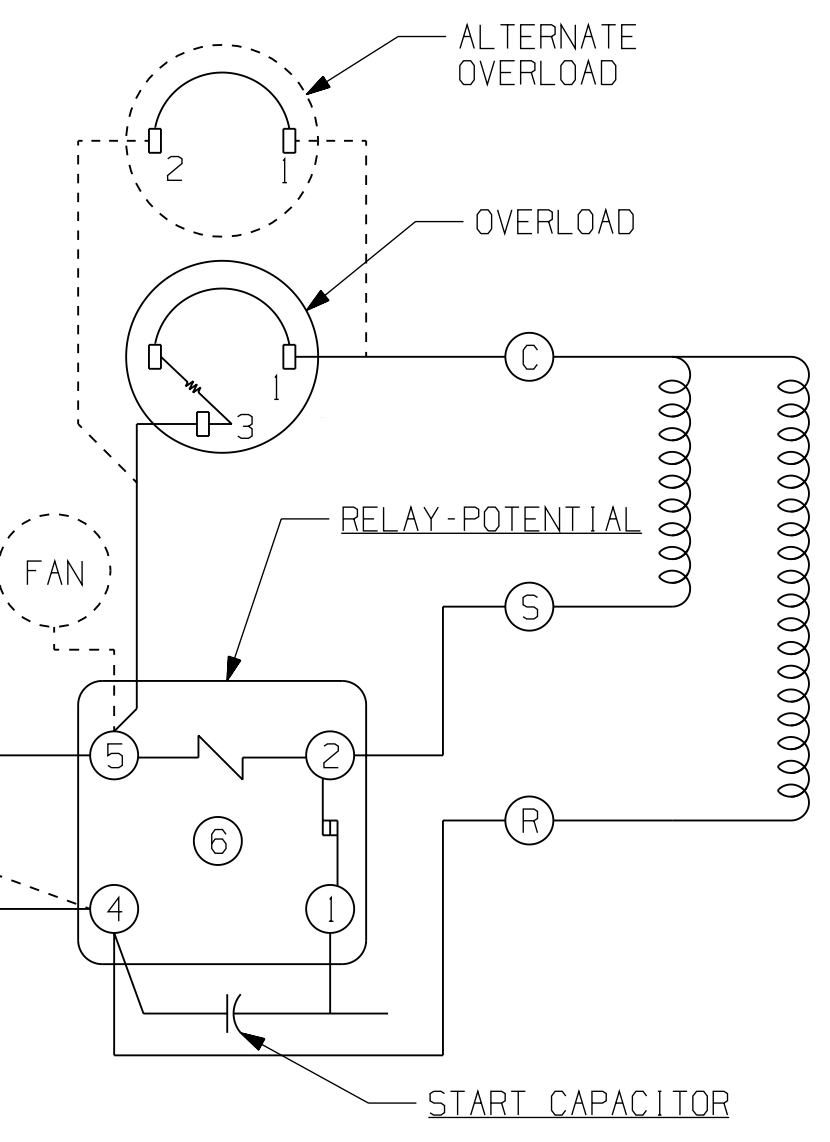
ALTERNATE C-C



SECTION B-B



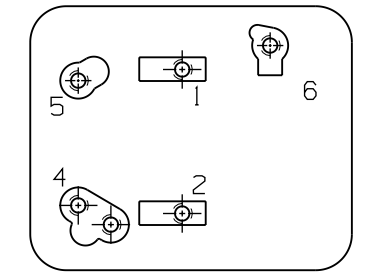
115 OR 230 V.-SCHEMATIC WIRING DIAGRAM - CSIR - POTENTIAL RELAY (REF. DWG. MD472-10)



WARNING - WIRING DIAGRAM MUST BE FOLLOWED AS SHOWN. ANY MISWIRING CAN CAUSE SERIOUS ELECTRICAL HAZARD AND POTENTIAL DAMAGE OR RUPTURE OF COMPONENT ELECTRICAL PARTS.

NOTES:

1. ASSEMBLE THESE PARTS AS SHOWN IF SPECIFIED ON B/M.
2. IDENTIFIED CONDUCTOR MAYBE WHITE OR RIBBED (115 VOLT ONLY-NEUTRAL).
3. COMPRESSOR UNIT GROUND SCREW IS NOT PROVIDED BY T.C.CO.
- ▲ 4. MUST COMPLY WITH T.P.Co. GLOBAL SPEC 08.



R.B.M. ALTERNATE RELAY - HOOKUP DOES NOT CHANGE WHEN THESE RELAYS ARE USED.

ENGLISH	
	Q.A. SYMBOLS
	☆ = CATEGORY I
	△ = CATEGORY II
	□ = CATEGORY III
	○ = CATEGORY IV

Ⓟ AJ - 115 OR 230 VOLT - CSIR - POTENTIAL RELAY

Banner User: ken.krzywdzinski Part/Rev: aj-deaj2_v-c.prt Date: 26-Jan-10 Time: 15:48

EC30306		KMK		DATE		DIS.CODE		NAME	
3A REVISED NOTE, 3C ADDED GLOBAL SPEC 08.		#244142-000 REDRAWN, & REVISED ORIENTATION OF LEAD WIRE.		-				ELECTRICAL HOOKUP	
V		U		LT LC		MATERIAL		NOTED	
3A		7F		3F		DRAWING No. MDBBB-08		REVISION LEVEL: REL	
THIS DRAWING OR PRINT IS THE PROPERTY OF TECUMSEH PRODUCTS COMPANY AND IS NOT TO BE REPRODUCED OR TRANSMITTED IN ANY FORM OR BY ANY MEANS, ELECTRONIC OR MECHANICAL, WITHOUT THE WRITTEN PERMISSION OF TECUMSEH PRODUCTS COMPANY. THE INFORMATION CONTAINED HEREIN IS FOR THE EXCLUSIVE USE OF THE RECIPIENT AND IS NOT TO BE DISCLOSED TO ANY OTHERS WITHOUT THE EXPRESS AND WRITTEN PERMISSION OF TECUMSEH PRODUCTS COMPANY. THE RECIPIENT SHALL BE RESPONSIBLE FOR THE PROTECTION OF THIS INFORMATION AND SHALL NOT BE HELD LIABLE FOR ANY LOSS OR DAMAGE TO THE INFORMATION CONTAINED HEREIN. THE RECIPIENT SHALL BE RESPONSIBLE FOR THE PROTECTION OF THIS INFORMATION AND SHALL NOT BE HELD LIABLE FOR ANY LOSS OR DAMAGE TO THE INFORMATION CONTAINED HEREIN.		SCALE 1:1 & NOTED		THIS PRINT SUPERSEDES ALL PRINTS PRIOR TO		DRAWING NO. DEAJ2			