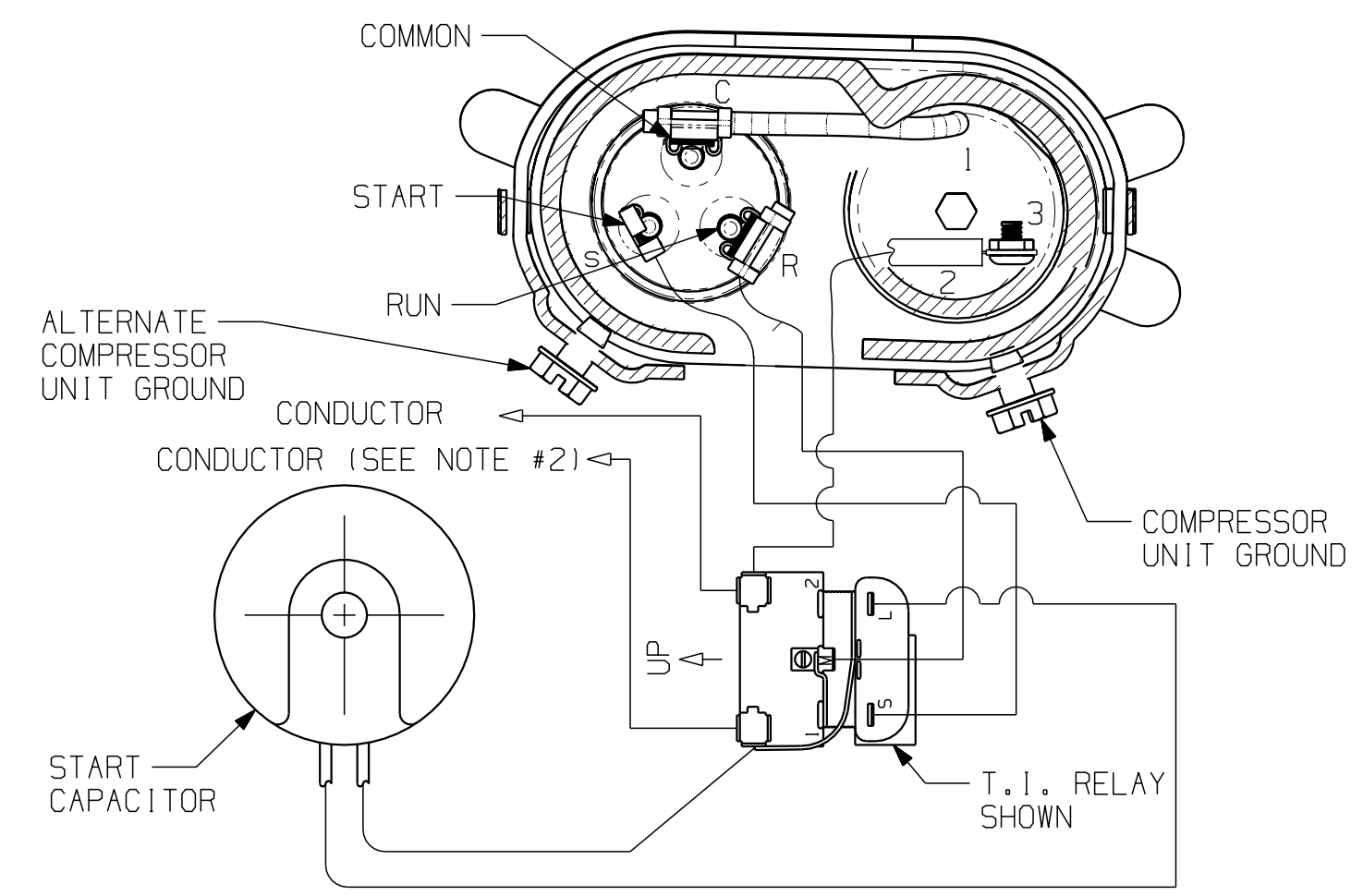
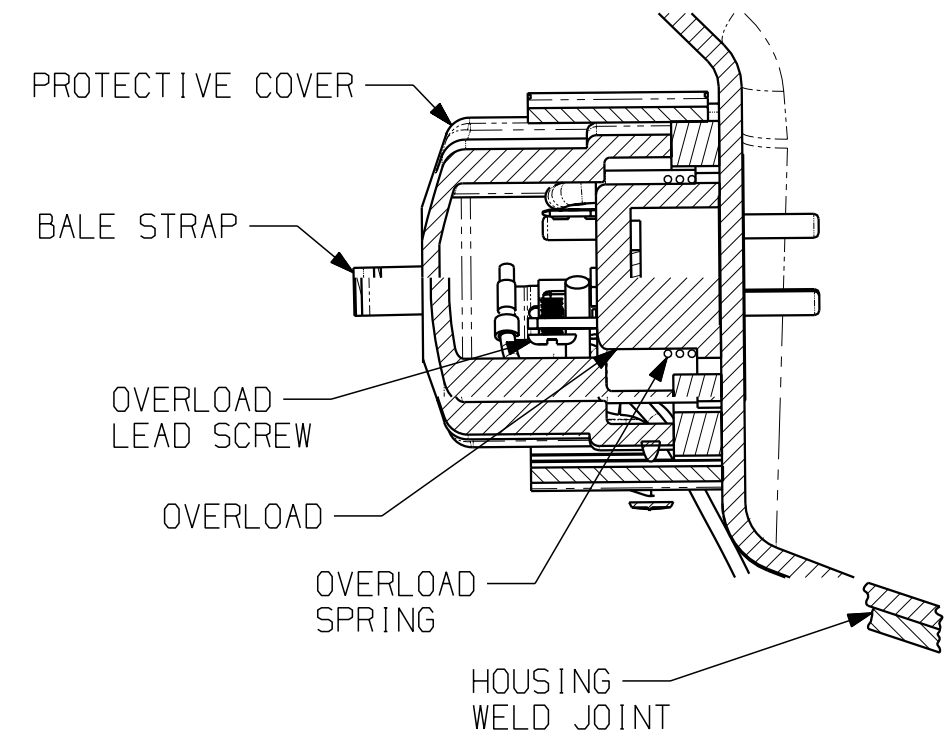


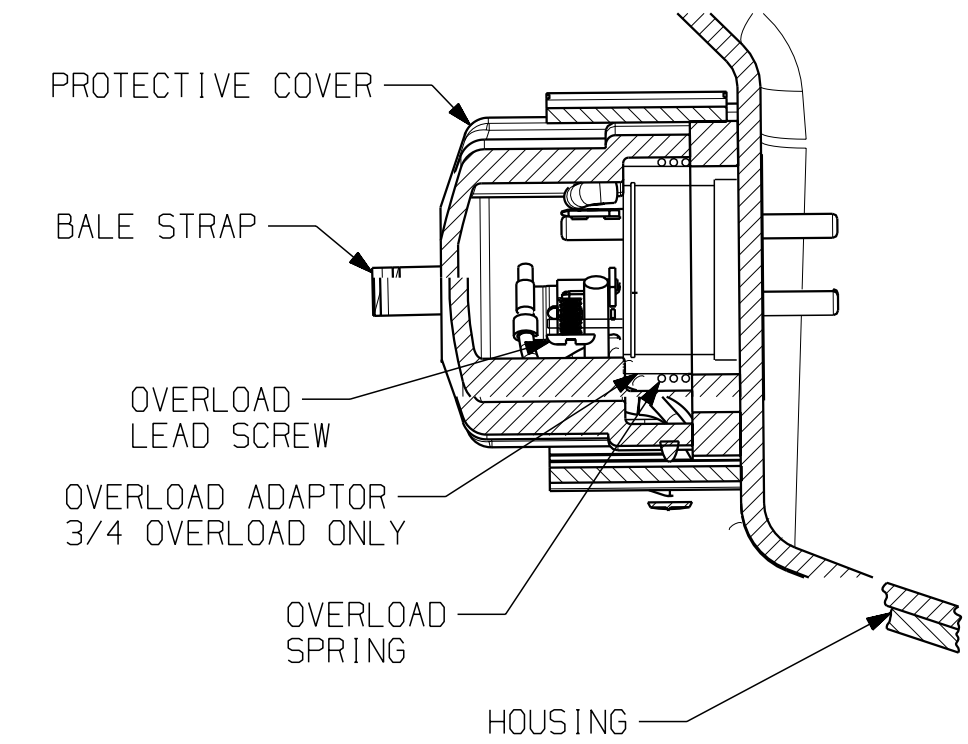
ALTERNATE A-A



SECTION B-B

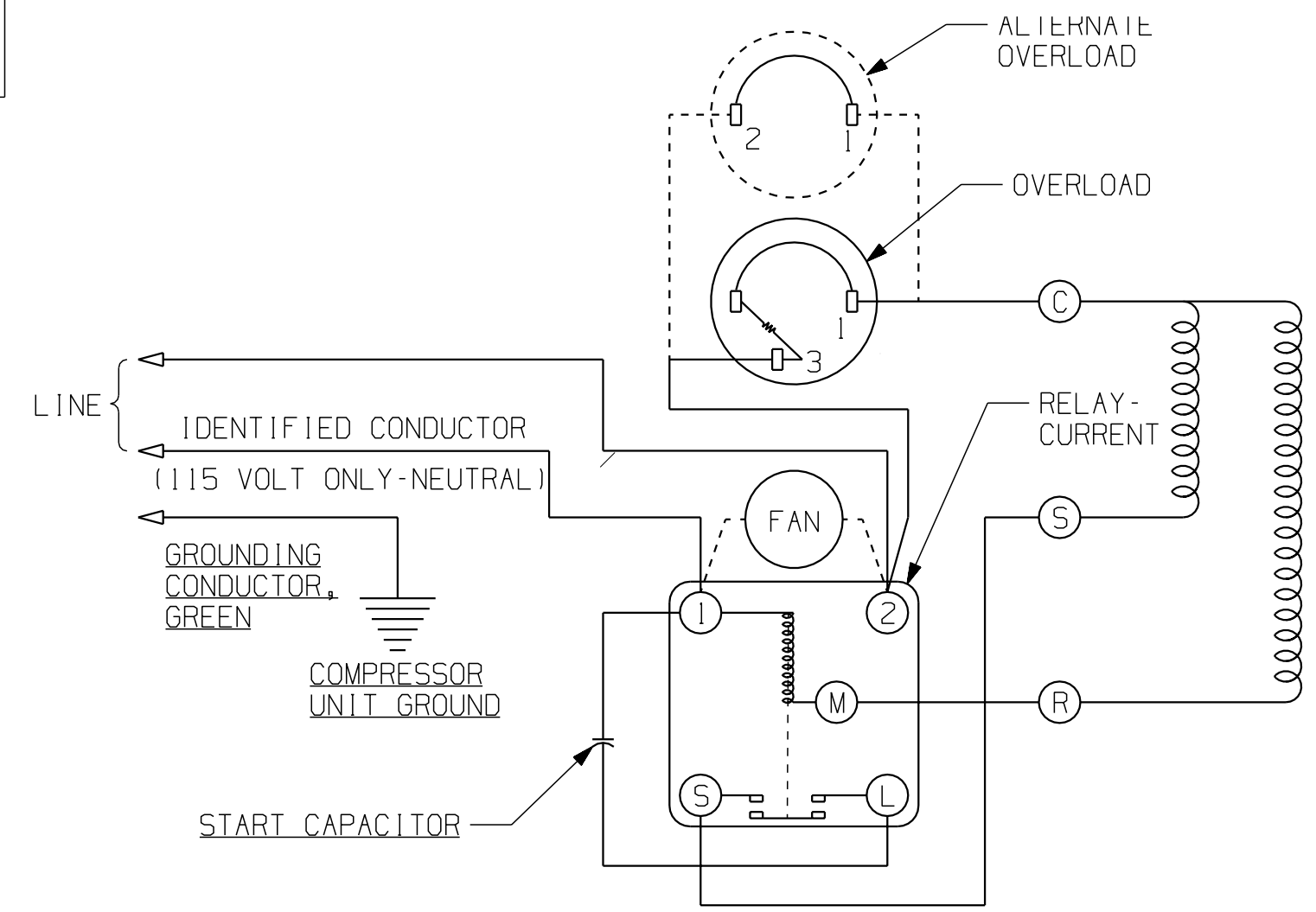
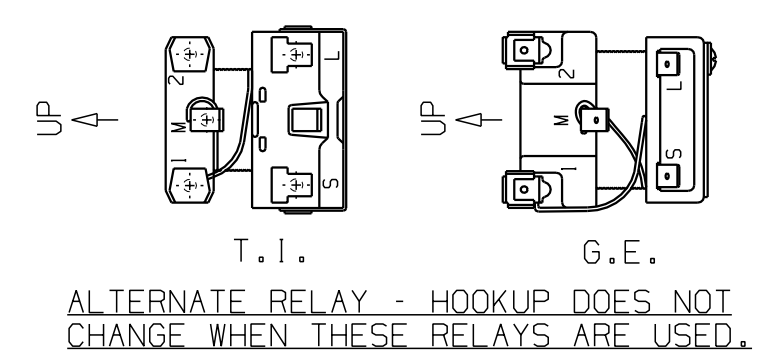


SECTION C-C



ALTERNATE B-B

WARNING - WIRING DIAGRAM MUST BE FOLLOWED AS SHOWN. ANY MISWIRING CAN CAUSE SERIOUS ELECTRICAL HAZARD AND POTENTIAL DAMAGE OR RUPTURE OF COMPONENT ELECTRICAL PARTS.



115 OR 230 V. - SCHEMATIC WIRING DIAGRAM - CSIR - CURRENT RELAY (REF. DWG. MD472-9)

NOTES:

1. ASSEMBLE THESE PARTS AS SHOWN IF SPECIFIED ON B/M.
2. IDENTIFIED CONDUCTOR MAYBE WHITE OR RIBBED (115 VOLT ONLY-NEUTRAL).
3. COMPRESSOR UNIT GROUND SCREW IS NOT PROVIDED BY T.P.CO.

ENGLISH	
Q.A. SYMBOLS	
☆	= CATEGORY I
△	= CATEGORY II
□	= CATEGORY III
○	= CATEGORY IV

AJ - 115 OR 230 VOLT - CSIR - CURRENT RELAY

Banner User: ecrack Part/Rev: 01-deaj1_u-c.prt Date: 19-May-06 Time: 47:48

#244142-000 REDRAWN, & REVISED ORIENTATION OF LEAD WIRE.	U	7F	3F	DATE	1	DATE	1	DIS. CODE		NAME	ELECTRICAL HOOKUP	SCALE	1:1 & NOTED	THIS PRINT SUPERSEDES ALL PRINTS PRIOR TO
	MATERIAL NOTED											DRAWING NO.	DEAJ1	
	T.E.C.U.M.S.E.H. PRODUCTS CO. T.E.C.U.M.S.E.H., M.I.C.H.I.G.A.N.											REVISION LEVEL:	REL	
	DRAWING No. M0888-08													