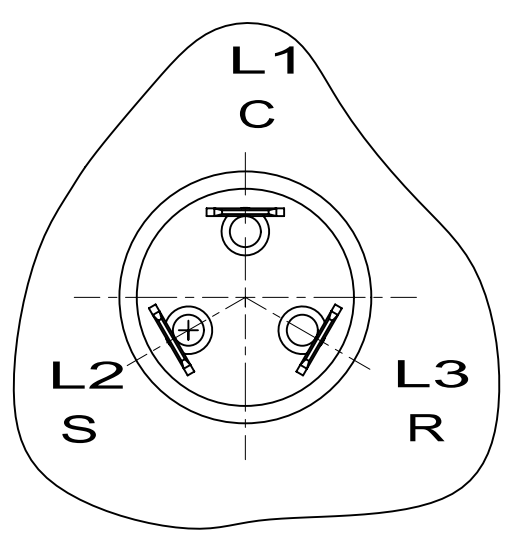


CRANKCASE HEATER LEADS. THE PATH OF THESE LEADS (FROM CRANKCASE HEATER TO PROTECTIVE COVER) TO BE IN A CLOCKWISE DIRECTION TO AVOID CONTACT WITH DISCHARGE TUBE.

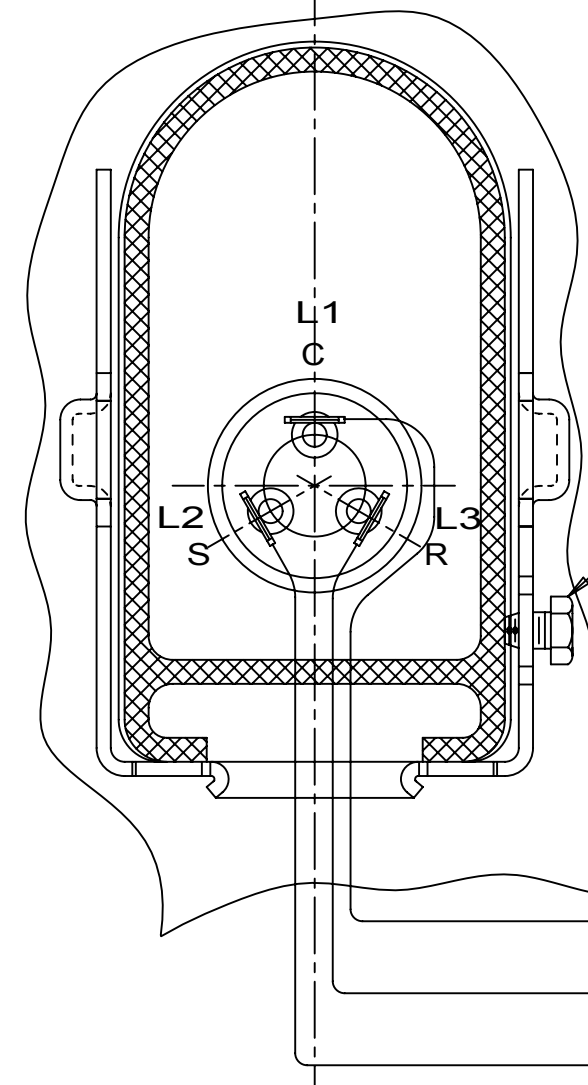
COMPRESSOR UNIT GROUND (SCREW IS NOT PROVIDED BY T.P. CO.)



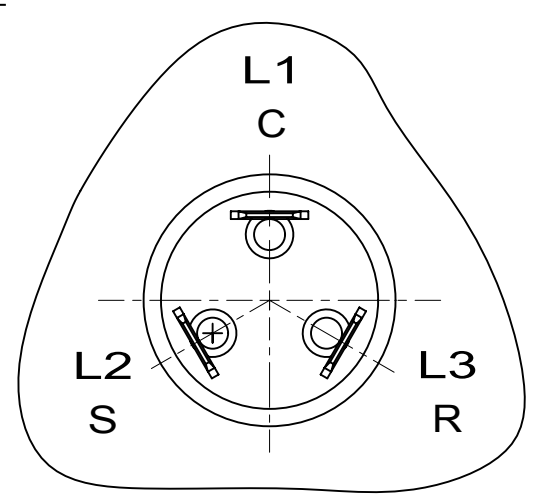
TERMINAL MAY BE THIS SIZE

CONNECT TO LINE SIDE OF CONTACTOR.

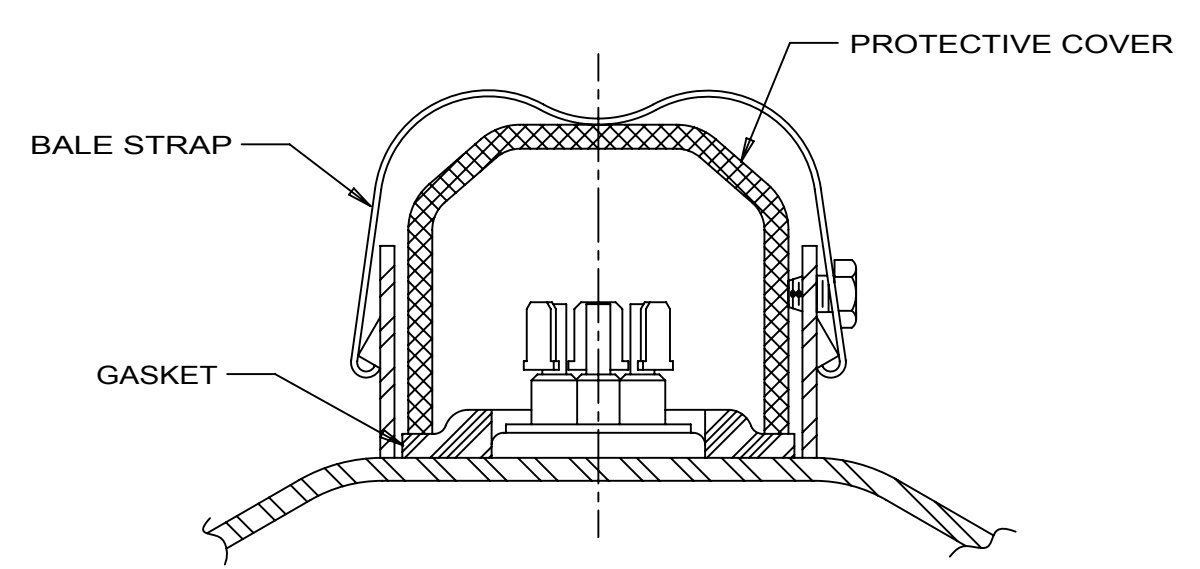
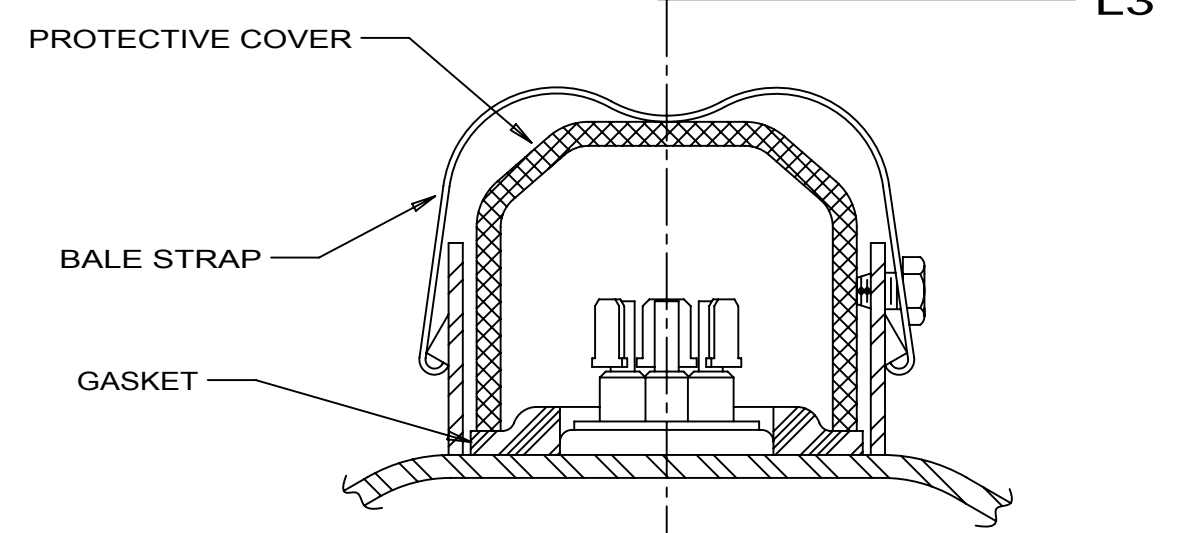
L1
L3
L2



COMPRESSOR UNIT GROUND (SCREW IS NOT PROVIDED BY T.P. CO.)

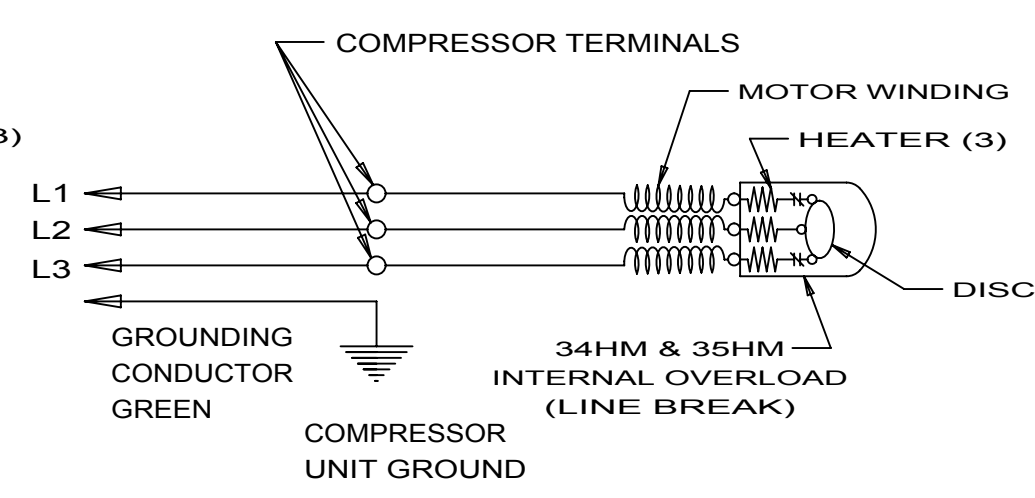


TERMINAL MAY BE THIS SIZE

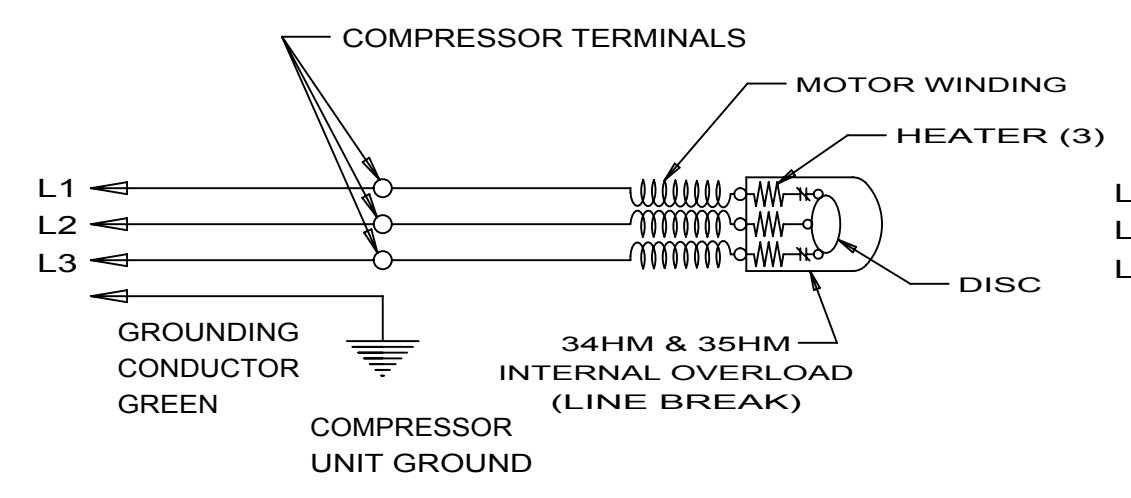


WARNING - WIRING DIAGRAM MUST BE FOLLOWED AS SHOWN. ANY MISWIRING CAN CAUSE SERIOUS ELECTRICAL HAZARD AND POTENTIAL DAMAGE OR RUPTURE OF COMPONENT ELECTRICAL PARTS.

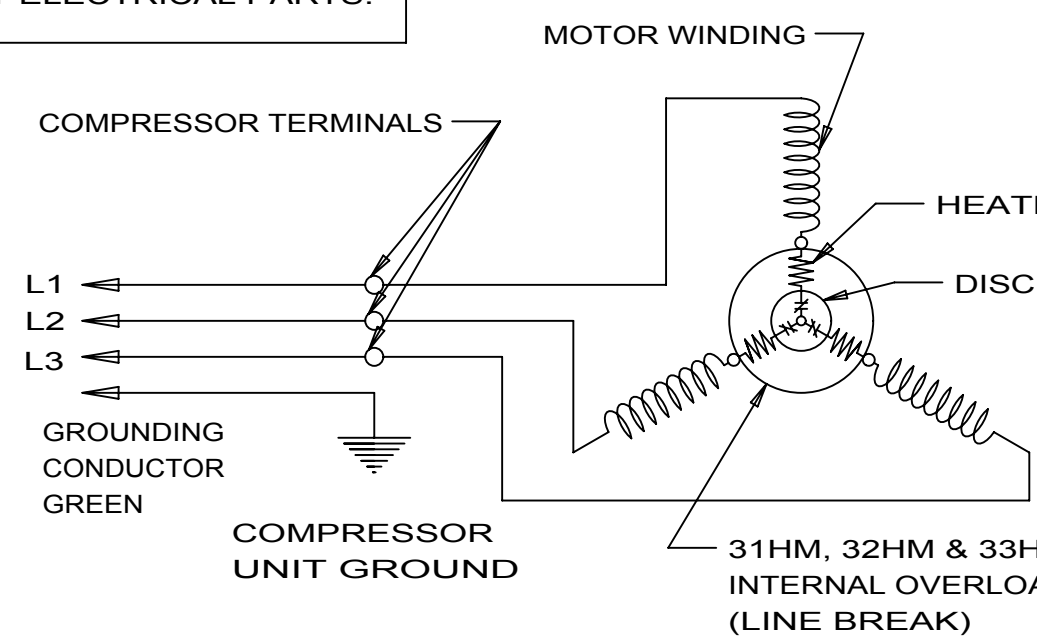
CRANKCASE HEATER MUST BE CONNECTED TO LINESIDE OF CONTACTOR.



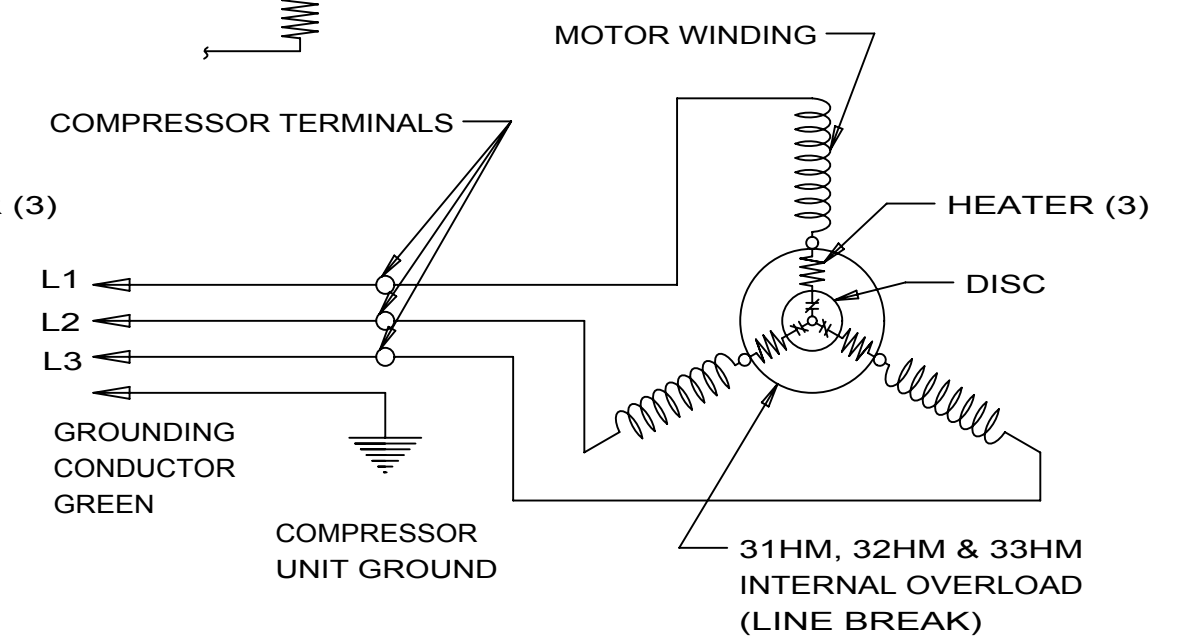
SCHMATIC WIRING DIAGRAM - 3 PHASE INTERNAL OVERLOAD AND (LINE BREAK) REF DWG MD472-43



SCHMATIC WIRING DIAGRAM - 3 PHASE INTERNAL OVERLOAD (LINE BREAK) REF DWG MD472-24



SCHMATIC WIRING DIAGRAM - 3 PHASE INTERNAL OVERLOAD (LINE BREAK) REF DWG MD472-24



SCHMATIC WIRING DIAGRAM - 3 PHASE INTERNAL OVERLOAD (LINE BREAK) AND CRANKCASE HEATER. REF DWG MD472-43

AW - 3 PHASE - INTERNAL OVERLOAD (LINE BREAK) - CRANKCASE HATER.
AW - 3 PHASE - INTERNAL OVERLOAD (LINE BREAK).

Q.A. SYMBOLS

<p>THIS DRAWING OR PRINT IS THE PROPERTY OF TECUMSEH PRODUCTS COMPANY. IT IS LOANED TO YOU FOR YOUR INFORMATION ONLY. IT IS NOT TO BE REPRODUCED, COPIED, OR TRANSMITTED IN ANY MANNER WITHOUT THE EXPRESS AND WRITTEN CONSENT OF TECUMSEH PRODUCTS COMPANY. THE INFORMATION CONTAINED HEREIN IS UNCLASSIFIED AND IS AVAILABLE TO OTHERS WITHOUT THE EXPRESS AND WRITTEN CONSENT OF TECUMSEH PRODUCTS COMPANY. ANY REPRODUCTION OR TRANSMISSION OF THIS INFORMATION WITHOUT THE EXPRESS AND WRITTEN CONSENT OF TECUMSEH PRODUCTS COMPANY IS PROHIBITED.</p>									
DIS.CODE	NAME	<p>ELECTRICAL HOOK-UP</p>							
DWN	R.M.D.	CK.	APR.	SCALE	<p>THIS PRINT SUPERSEDES ALL PRINTS PRIOR TO</p>				
6				1"=1"	<p>S CO.</p>				
MATERIAL				<p>PART NO.</p>					
				<p>DEAW-2</p>					