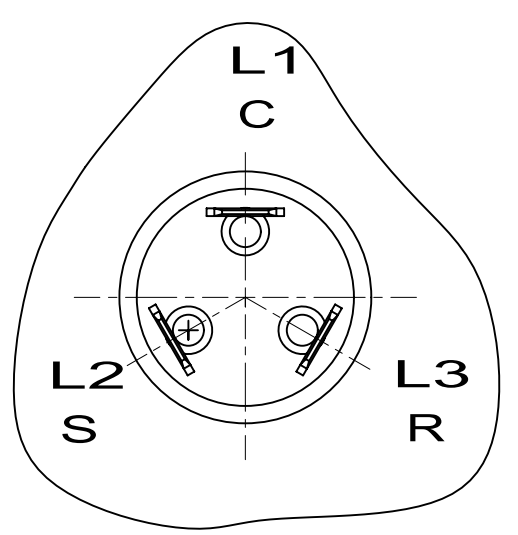


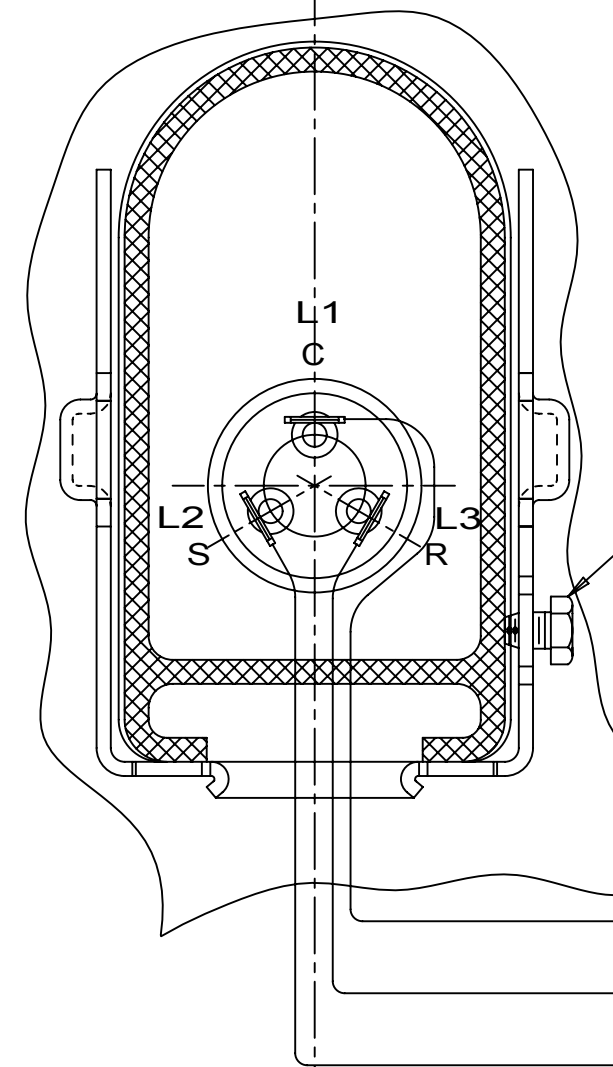
CRANKCASE HEATER LEADS. THE PATH OF THESE LEADS (FROM CRANKCASE HEATER TO PROTECTIVE COVER) TO BE IN A CLOCKWISE DIRECTION TO AVOID CONTACT WITH DISCHARGE TUBE.

COMPRESSOR UNIT GROUND (SCREW IS NOT PROVIDED BY T.P. CO.)

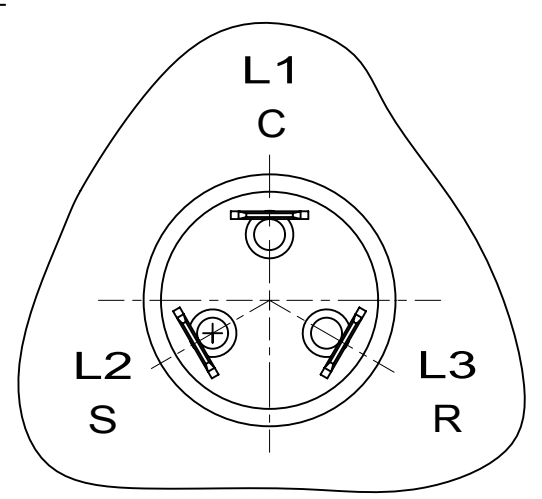


TERMINAL MAY BE THIS SIZE

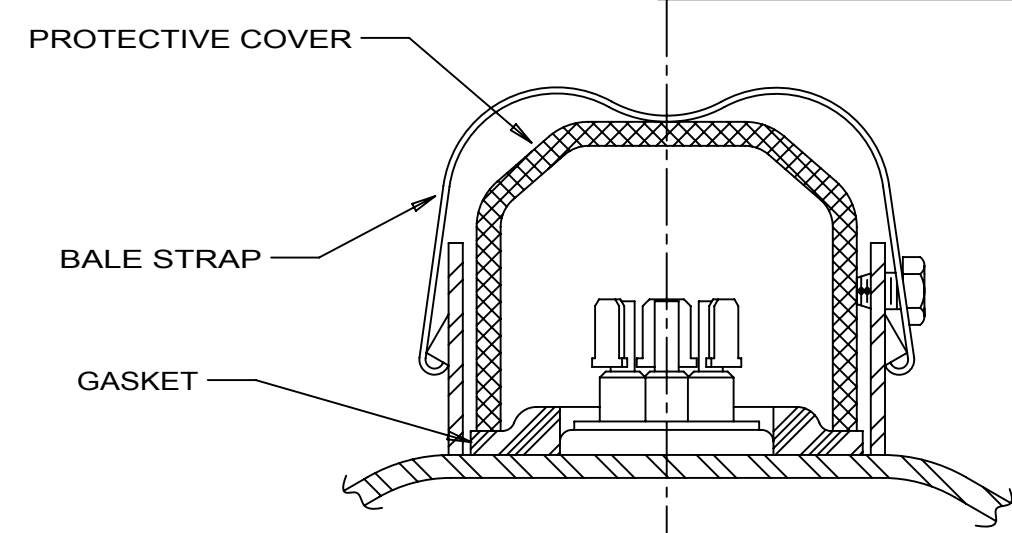
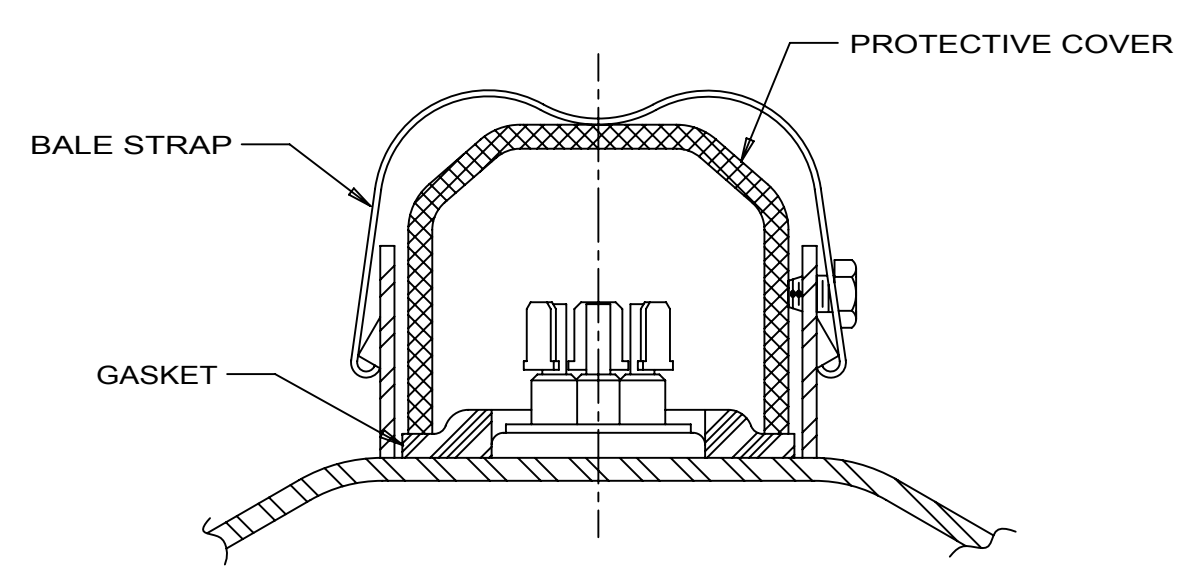
CONNECT TO LINE SIDE OF CONTACTOR.



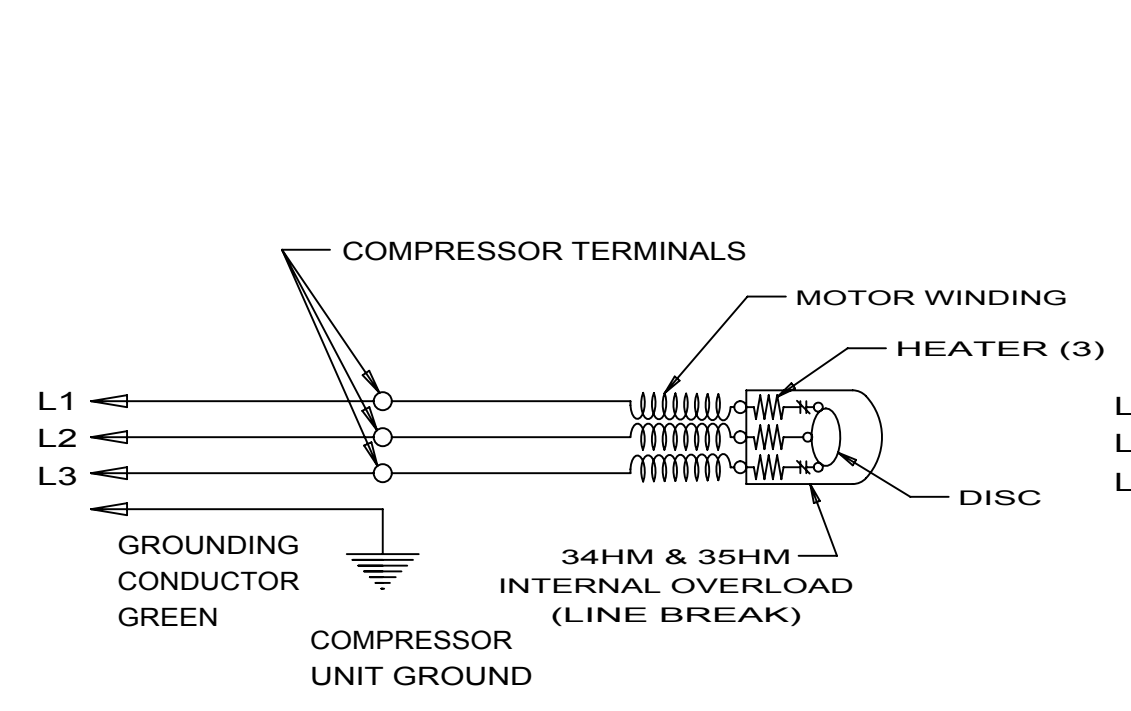
COMPRESSOR UNIT GROUND (SCREW IS NOT PROVIDED BY T.P. CO.)



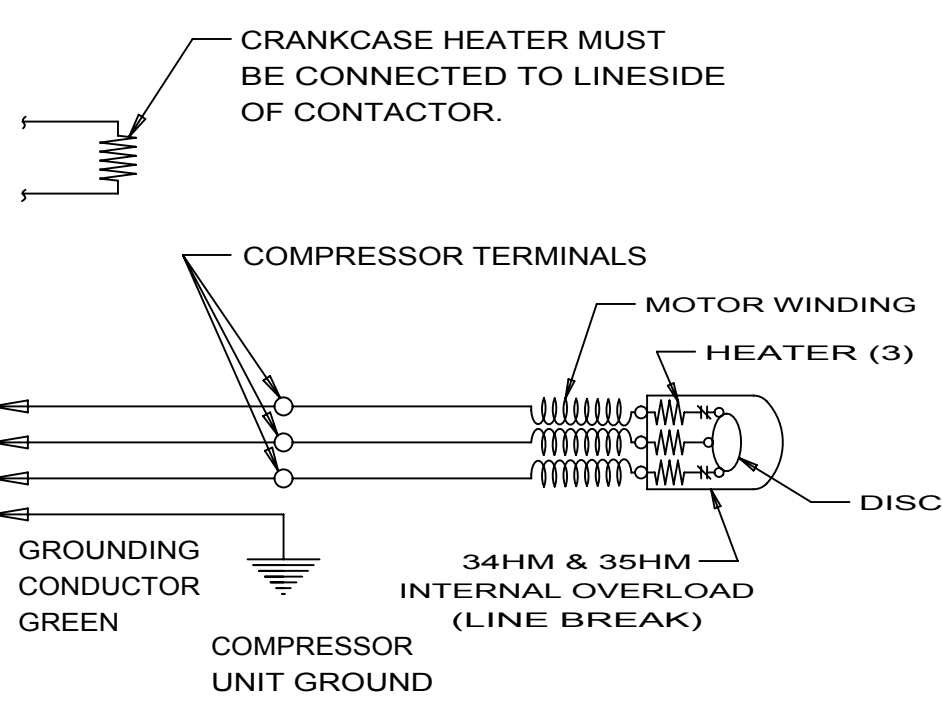
TERMINAL MAY BE THIS SIZE



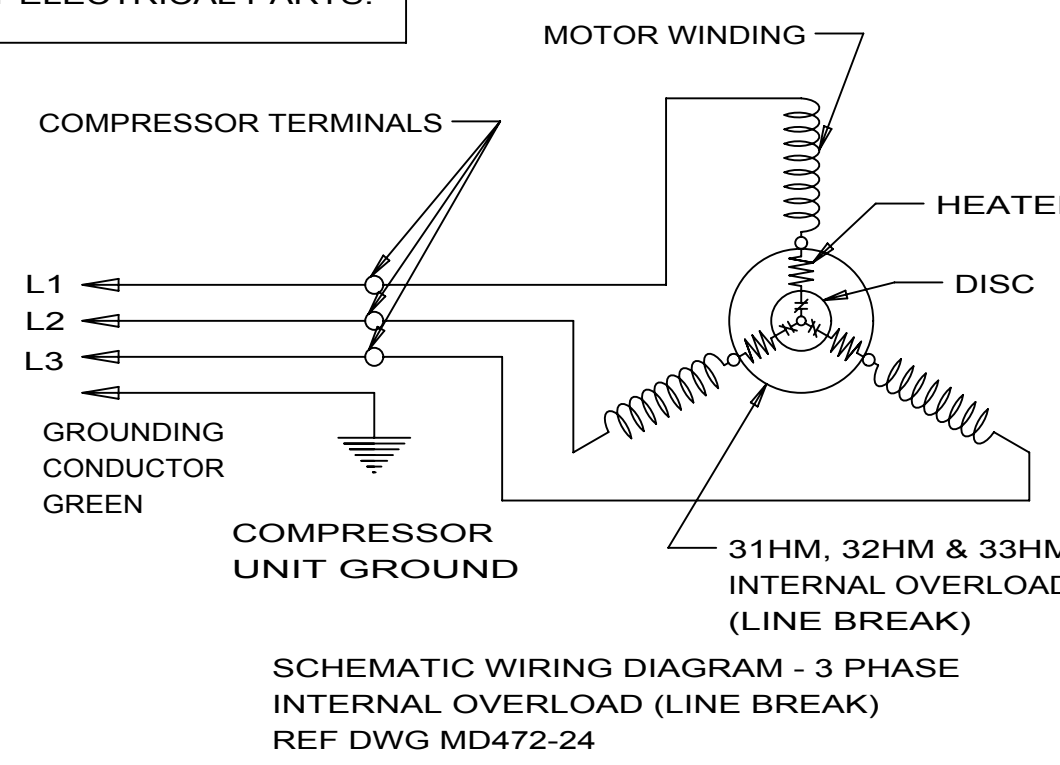
WARNING - WIRING DIAGRAM MUST BE FOLLOWED AS SHOWN. ANY MISWIRING CAN CAUSE SERIOUS ELECTRICAL HAZARD AND POTENTIAL DAMAGE OR RUPTURE OF COMPONENT ELECTRICAL PARTS.



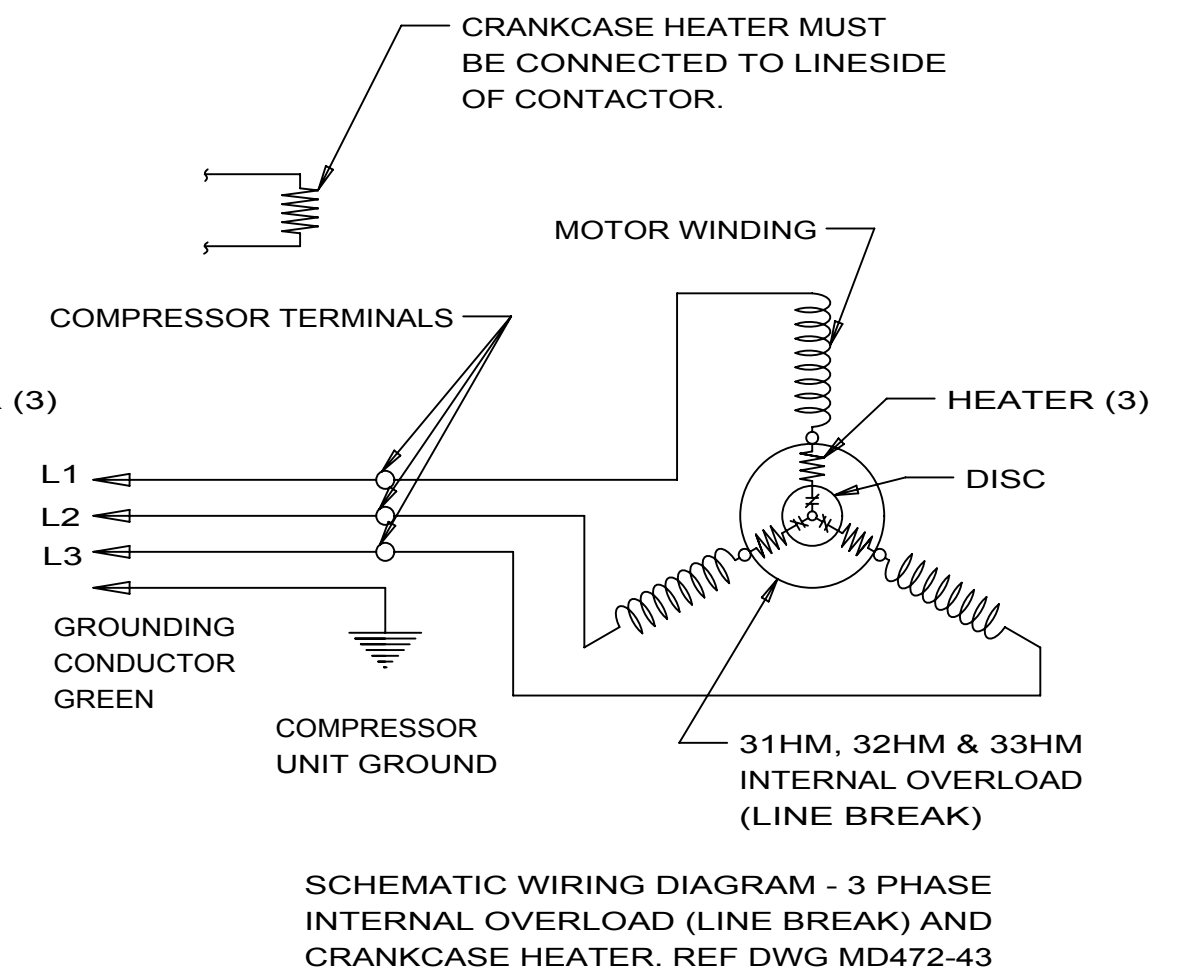
SCHMATIC WIRING DIAGRAM - 3 PHASE INTERNAL OVERLOAD (LINE BREAK) REF DWG MD472-24



SCHMATIC WIRING DIAGRAM - 3 PHASE INTERNAL OVERLOAD AND (LINE BREAK) REF DWG MD472-43



SCHMATIC WIRING DIAGRAM - 3 PHASE INTERNAL OVERLOAD (LINE BREAK) REF DWG MD472-24



SCHMATIC WIRING DIAGRAM - 3 PHASE INTERNAL OVERLOAD (LINE BREAK) AND CRANKCASE HEATER. REF DWG MD472-43

AW - 3 PHASE - INTERNAL OVERLOAD (LINE BREAK) - CRANKCASE HATER.
AW - 3 PHASE - INTERNAL OVERLOAD (LINE BREAK).

Q.A. SYMBOLS

D	6D	EC26258 CHANGED L2 & L3	RDS 17JUL09	C	8B REVISED WIRING DIAGRAM UPDATED TO NX	T.M.G 5DEC03	B	2F 5F	#235647 ADDED NOTE	SJS 4/16/97	A	#227799 REDRAWN NO CHANGE	DATE	DIS.CODE	NAME	DWN. R.M.D. 6-27-94	CK.	APR.	SCALE 1"=1"	THIS PRINT SUPERSEDES ALL PRINTS PRIOR TO

THIS DRAWING OR PRINT IS THE PROPERTY OF TECUMSEH PRODUCTS COMPANY AND IS NOT TO BE REPRODUCED OR TRANSMITTED IN ANY FORM OR BY ANY MEANS, ELECTRONIC OR MECHANICAL, INCLUDING PHOTOCOPYING, RECORDING, OR BY ANY INFORMATION STORAGE AND RETRIEVAL SYSTEM, WITHOUT THE EXPRESS AND WRITTEN PERMISSION OF TECUMSEH PRODUCTS COMPANY. THE INFORMATION CONTAINED HEREIN IS FOR THE EXCLUSIVE USE OF THE RECIPIENT AND IS NOT TO BE DISCLOSED OR MADE AVAILABLE TO OTHERS WITHOUT THE EXPRESS AND WRITTEN PERMISSION OF TECUMSEH PRODUCTS COMPANY. ANY REUSE OR DISTRIBUTION OF THIS INFORMATION WITHOUT THE EXPRESS AND WRITTEN PERMISSION OF TECUMSEH PRODUCTS COMPANY IS STRICTLY PROHIBITED. RECIPENT THEREOF TO TECUMSEH AT THE TIME OF RECEIPT AND TO ACCEPT THE SAME COMPLETELY AFTER RECEIPT.

DO NOT SCALE THIS DRAWING. ALL FERROUS MATERIALS MUST BE MANAGED AS RECEIVED OR AT COMPRESSOR ASSEMBLY.