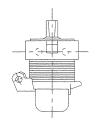
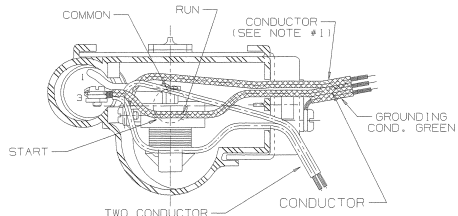


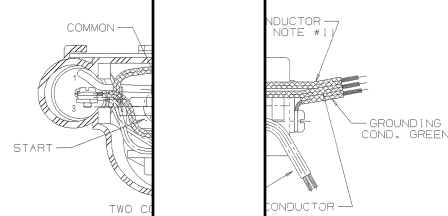
G. E. RELAY SHOWN  
WITH FAN



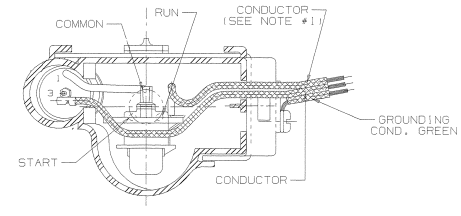
ALTERNATE  
RELAY  
(SCREW TYPE)



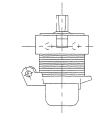
T.I. RELAY SHOWN  
WITH FAN



E.M.B. F  
WIT



G. E. RELAY SHOWN  
NO FAN

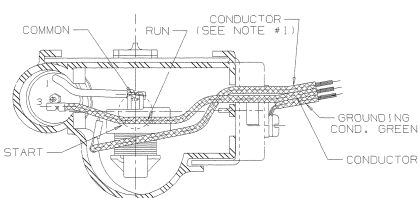
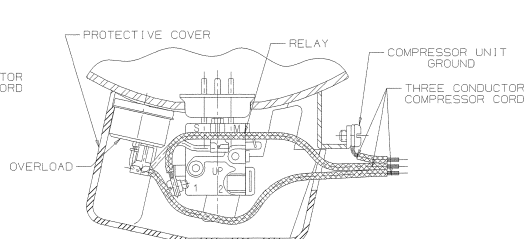
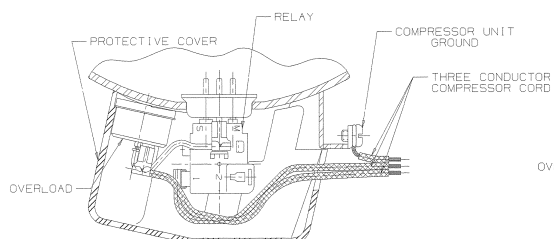


ALTERNATE  
RELAY  
(SCREW TYPE)

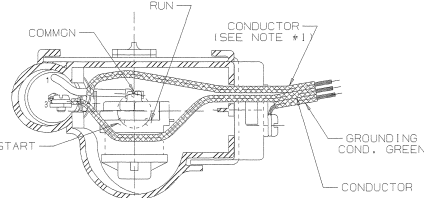
NOTE

1. IDENTIFIED CONDUCTOR MAYBE WHITE OR RIBBED (115 VOLT ONLY-NEUTRAL).
2. ASSEMBLE PARTS AS SHOWN IF SPECIFIED ON B/M
3. WHEN FAN IS USED HOOKUP AS SHOWN.

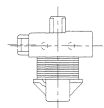
WARNING- WIRING DIAGRAM MUST BE FOLLOWED AS SHOWN ANY MISWIRING CAN CAUSE SERIOUS ELECTRICAL HAZARD AND POTENTIAL DAMAGE OR RUPTURE OF COMPONENT ELECTRICAL PARTS



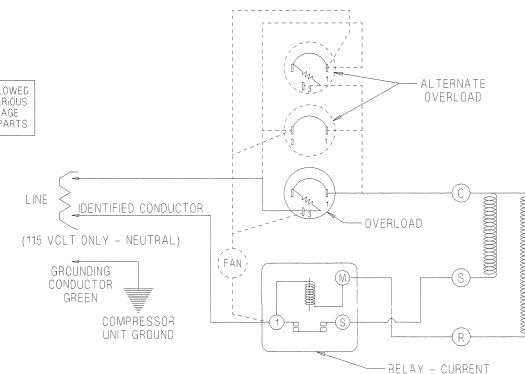
T.I. RELAY SHOWN  
NO FAN



E.M.B. RELAY SHOWN  
NO FAN



ALTERNATE  
RELAY  
(SCREW TYPE)



115 OR 230 VOLT - SCHEMATIC WIRING DIAGRAM - RSIR  
REF. DWG. MD-472

AZ-115 OR 230 VOLT-RSIR-CURRENT RELAY-FAN & NO FAN

[illegible]